

Longshore Safety Tip

October - 2022

Dangers of Open Access Covers on Container Vessels

Every year, serious injuries occur when longshore workers fall through open access covers atop catwalks and lashing bridges

Longshore workers are reminded to close access covers when working on catwalks and in lashing bays



Workers should report to supervision any damaged or unsafe access covers

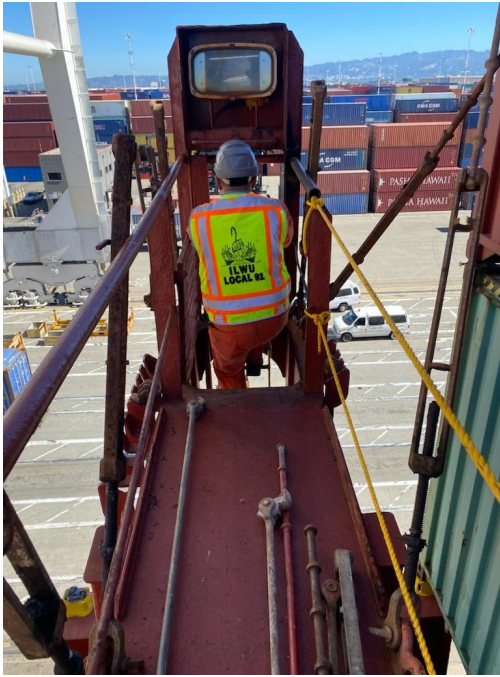


ILWU - PMA
PACIFIC COAST MARINE SAFETY COMMITTEE
DEDICATED TO SAFETY

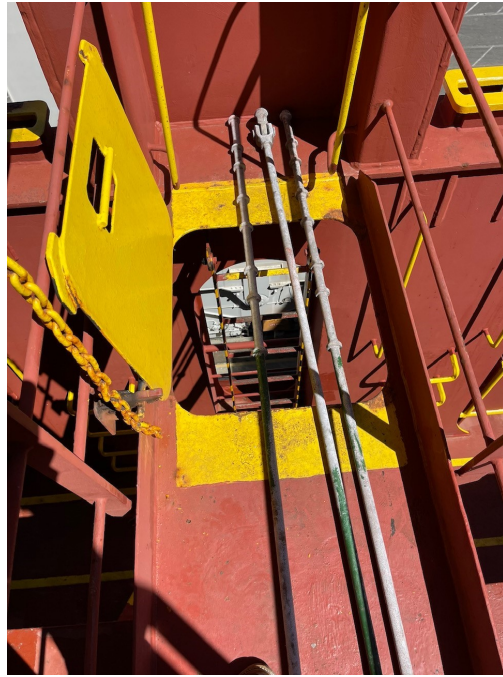


Potential Injuries of an Open Access Cover

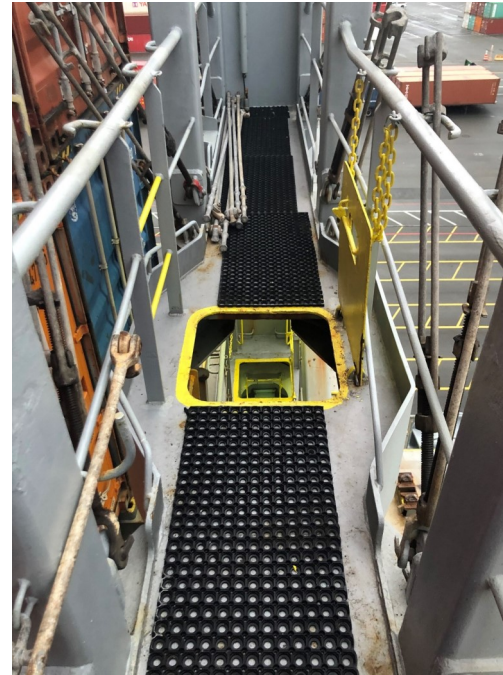
Slips, trips, and falls when climbing & descending ladders



Lashing gear falling through open access covers



Falling through an open hatch while unlocking containers



ILWU - PMA
PACIFIC COAST MARINE SAFETY COMMITTEE
DEDICATED TO SAFETY

