

Longshore Safety Tip

HOLDMEN - SAFETY AWARENESS

May 2006

Your gangway safety talk will inform you about the types of cargo you will be handling and the safety precautions needed to protect yourself.



Use caution when boarding the vessel, make sure the bulwark steps to the vessel deck are secure.



The weather deck should be unobstructed and oil or grease cleaned up.

*When entering the hold through a hatch, the ladder lid needs to be secured.
Make sure that holdback pins or hooks are in place.
Check for broken or missing rungs and/or excess grease.
Keep your hands free for climbing.*



Before using a ladder in the hold make sure it is secured.



ILWU/PMA
PACIFIC COAST MARINE SAFETY COMMITTEE
DEDICATED TO SAFETY



HOLDMEN SAFETY AWARENESS



*Always watch the load
and then safely
position yourself away
from loads.
Never turn your back
on any Load!*

**STAY OUT
OF THE
BIGHT!**

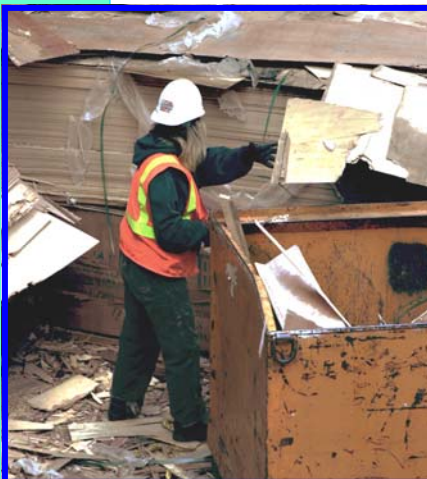
*Cargo can shift at
anytime in the hold.
So when working in
the hatch, beware of
shifting or unstable
cargo...*



*Watch where you
place your feet!
Watch for voids
between cargo
and/or drop-offs*



*Housekeeping
plays an
important roll
in ensuring a
safe workplace.
Dunnage, can
get thrown up
by the lift, if
not picked up*



*Make sure
that steel
plates are
secure when
a lift is
operating in
the hatch. If
not the plates
may shift*