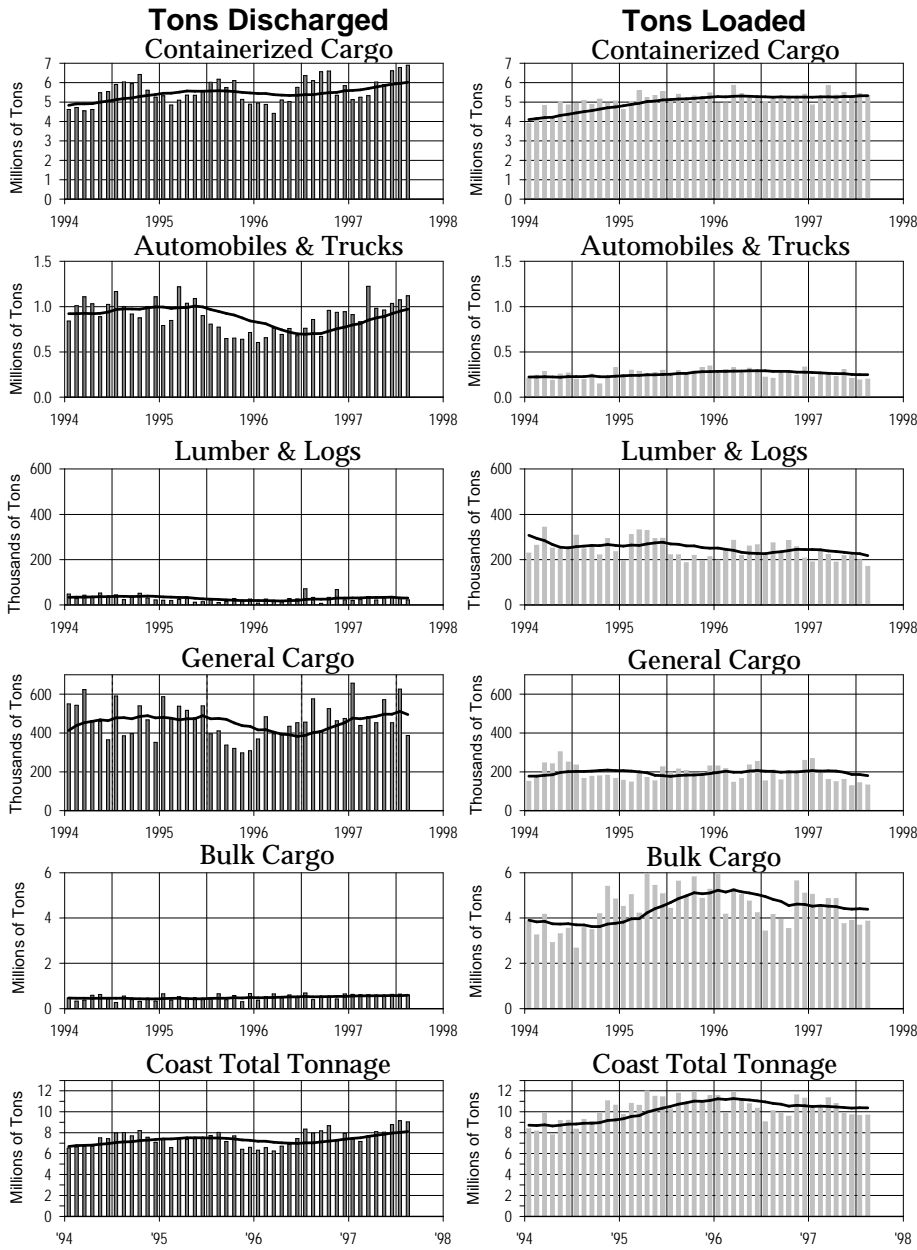


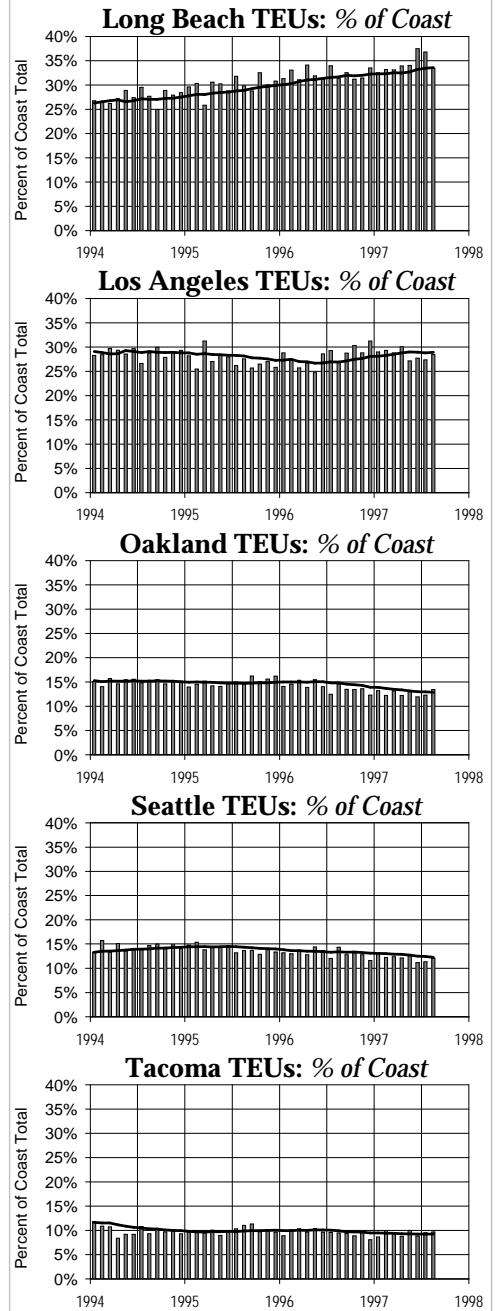
# Monthly Tonnage by Reporting Category: Discharged vs. Loaded

Actual Tons Reported by Month



In the Tonnage graphs above, bars represent monthly totals, and the lines show 12-month moving averages.

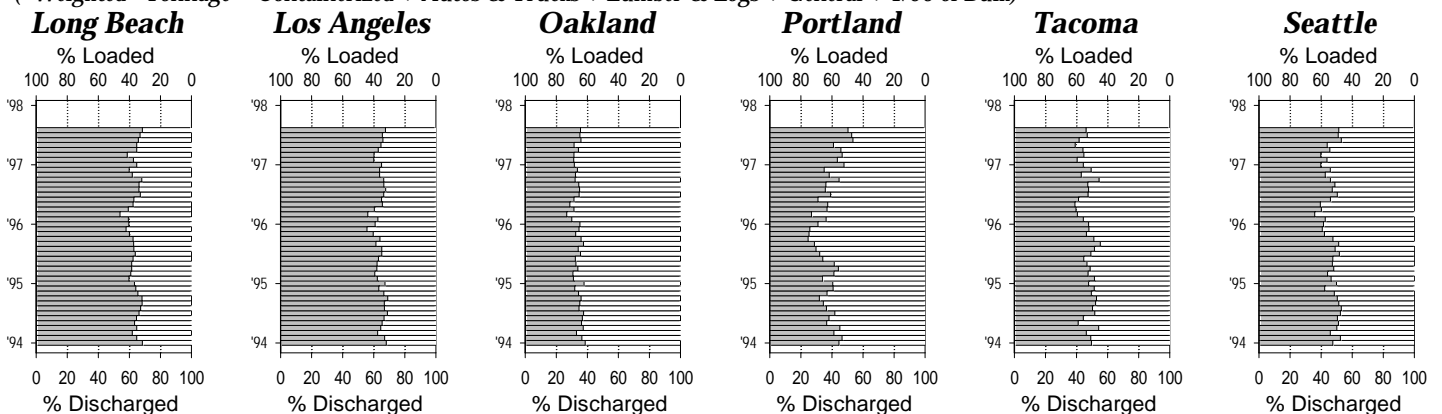
## Major Container Ports: Percent of Coast Total TEUs



## "Weighted" Tonnage: % Discharged vs. % Loaded

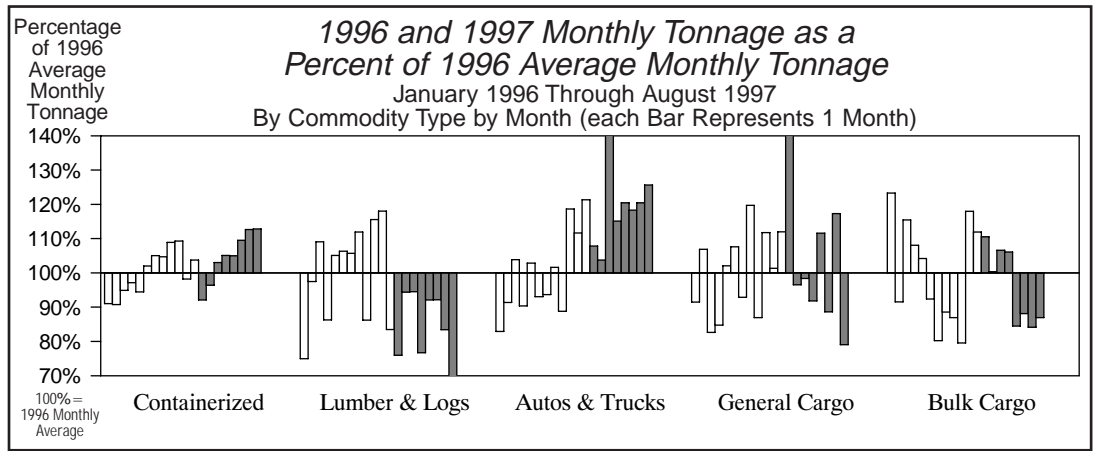
("Weighted" Tonnage = Containerized + Autos & Trucks + Lumber & Logs + General + 1/50 of Bulk)

% Discharged  % Loaded



ILWU LOCAL/PORT AREA	REGISTRATION		STATS (For 52 Payroll Weeks)							PORT HOURS (Year-to-date)					TONNAGE BY PORT AREA (For 12 months-to-date & YTD)									
	(At 10/17/97)		(Ending 10/4/97)		Hours Paid:					Hours Paid at					% of Category Coast Total (12 Months-to-Date)					% of 1997 YTD				
	Class	Number	Annual	Wkly	Out of	Other	Cas-	Inac-	P/R Wks	1-41, '97	Occ Codes	Exp.	Cont'r	Lmbr	Autos	Other	Bulk	1997 YTD	Coast	'97 as a	Cstwise			
TOTAL	"B"	Working	Hrs Pd	PGP	Port	Local	uals	atives	Avg. Wkly	% Cst	Clk	Frm	Rates*	RU's	Logs	Trucks	Gen'l	Cargo	TOTAL	1997 YTD	Coast	'97 as a	Cstwise	
NO.	NO.	NO.	HRS	\$	%	%	%	%	HRS	%	%	%	%	%	%	%	%	%	%	TONS	%	%	TONS	
<b>Longshoremen</b>																								
<b>Southern California</b>																								
29 San Diego	55	17	54	1,675	4	8.1	6.8	30.4	2.7	2,694	0.7	10.6	12.2	29.5	0.1	2.2	8.0	1.1	1.3	1.0	1,664,208	1.1	200.0	0
13 Los Angeles/Long Beach	3,245	724	3,192	2,020	< 1	0.2	2.9	11.5	0.4	209,551	56.6	23.3	10.0	21.8	62.3	4.0	35.6	55.1	22.1	48.6	71,941,086	48.8	108.1	96,087
46 Port Hueneme	85	11	81	1,953	3	15.1	4.3	24.1	0.0	4,274	1.2	14.3	6.1	21.4	< 0.1	< 0.1	8.3	7.3	-	0.8	1,314,637	0.9	107.1	0
<b>Southern California Total</b>	<b>3,385</b>	<b>752</b>	<b>3,327</b>	<b>2,013</b>	<b>&lt; 1</b>	<b>0.7</b>	<b>3.0</b>	<b>12.1</b>	<b>0.5</b>	<b>216,519</b>	<b>58.5</b>	<b>23.0</b>	<b>10.0</b>	<b>21.8</b>	<b>62.4</b>	<b>6.3</b>	<b>51.9</b>	<b>63.6</b>	<b>23.4</b>	<b>50.4</b>	<b>74,919,931</b>	<b>50.8</b>	<b>109.2</b>	<b>96,087</b>
<b>Northern California</b>																								
10 San Francisco Bay Area	953	145	892	1,601	1	1.9	0.6	2.7	1.9	41,458	11.2	26.7	8.0	8.7	13.2	0.1	9.8	6.5	1.7	9.4	13,601,817	9.2	95.0	177,268
54 Stockton	54	17	54	1,545	61	1.4	8.4	21.6	3.8	2,738	0.7	8.2	7.2	10.8	-	-	-	1.4	2.2	0.6	1,027,153	0.7	89.2	0
18 Sacramento	26	11	26	1,591	164	8.6	14.5	25.7	1.7	1,321	0.4	23.2	6.9	14.9	< 0.1	0.5	-	2.0	1.3	0.4	621,085	0.4	92.0	24,327
14 Eureka	31	0	31	967	305	40.0	3.6	6.8	1.6	458	0.1	12.6	10.7	7.5	-	1.2	-	2.8	0.5	0.3	436,711	0.3	126.7	0
<b>Northern California Total</b>	<b>1,064</b>	<b>173</b>	<b>1,003</b>	<b>1,578</b>	<b>18</b>	<b>2.7</b>	<b>1.8</b>	<b>5.0</b>	<b>2.0</b>	<b>45,975</b>	<b>12.4</b>	<b>25.4</b>	<b>8.0</b>	<b>9.0</b>	<b>13.2</b>	<b>1.7</b>	<b>9.8</b>	<b>12.6</b>	<b>5.7</b>	<b>10.8</b>	<b>15,686,766</b>	<b>10.6</b>	<b>95.1</b>	<b>201,595</b>
<b>Oregon</b>																								
12 North Bend/Coos Bay	102	20	100	1,531	47	22.5	17.2	7.4	2.2	3,300	0.9	8.3	7.1	5.4	< 0.1	8.3	< 0.1	1.1	5.7	1.7	2,545,961	1.7	106.3	6,378
53 Newport	8	0	8	874	400	82.3	49.1	5.0	0.0	54	0.0	6.7	5.1	1.7	-	0.2	-	-	-	< 0.1	5,503	0.0	63.8	0
50 Astoria	54	0	54	615	447	87.0	0.0	5.8	0.2	82	0.0	0.0	0.0	1.9	-	0.8	-	-	-	< 0.1	24,342	0.0	157.3	0
8 Portland	452	70	447	1,771	12	4.7	6.6	3.1	2.0	20,225	5.5	14.4	7.2	4.4	2.7	3.6	19.7	3.3	19.3	8.4	11,686,198	7.9	102.1	24,017
4 Vancouver, WA	157	54	157	1,822	6	10.3	11.4	7.7	1.5	7,116	1.9	13.9	6.2	18.1	< 0.1	3.1	2.0	4.2	8.2	2.5	3,942,280	2.7	123.4	0
21 Longview, WA	203	39	200	1,830	14	12.6	7.0	5.7	2.6	8,680	2.3	9.3	8.4	7.3	-	27.6	-	5.3	15.8	4.9	7,333,535	5.0	94.9	39,921
<b>Oregon Total</b>	<b>976</b>	<b>183</b>	<b>966</b>	<b>1,694</b>	<b>43</b>	<b>11.1</b>	<b>8.6</b>	<b>4.9</b>	<b>2.1</b>	<b>39,457</b>	<b>10.7</b>	<b>12.6</b>	<b>7.3</b>	<b>7.6</b>	<b>2.7</b>	<b>43.7</b>	<b>21.7</b>	<b>13.9</b>	<b>49.1</b>	<b>17.5</b>	<b>25,537,819</b>	<b>17.3</b>	<b>103.0</b>	<b>70,316</b>
<b>Washington</b>																								
24 Aberdeen	75	0	75	1,508	107	17.7	20.2	7.9	1.1	2,733	0.7	5.1	7.5	2.2	-	18.0	-	0.6	-	0.3	389,517	0.3	90.9	205,851
27 Port Angeles	56	0	56	1,135	369	60.0	11.2	2.9	0.0	621	0.2	7.4	7.1	1.8	-	4.0	-	-	0.3	0.1	183,542	0.1	65.5	47,827
51 Port Gamble	13	0	13	594	597	88.9	3.1	0.0	0.0	17	0.0	0.0	0.0	0.0	-	-	-	-	-	-	0	0.0	0.0	0
47 Olympia	23	0	23	1,336	215	19.7	25.8	30.1	0.0	1,061	0.3	11.4	13.5	23.9	< 0.1	3.5	< 0.1	< 0.1	-	0.1	89,369	0.1	187.2	0
23 Tacoma	451	90	445	1,927	< 1	0.7	6.0	17.0	0.4	26,785	7.2	20.5	8.7	6.9	9.2	17.2	11.3	3.2	11.6	9.9	14,768,502	10.0	99.1	0
19 Seattle	585	148	576	1,840	< 1	2.4	6.7	13.3	0.3	33,658	9.1	26.9	7.8	14.0	12.4	0.4	5.4	3.6	7.2	10.0	14,494,283	9.8	101.8	99,338
32 Everett	60	0	57	1,397	139	18.4	16.0	5.7	0.1	1,696	0.5	7.7	8.5	2.6	< 0.1	4.9	-	0.2	0.5	0.2	333,762	0.2	77.7	17,308
25 Anacortes	13	0	13	1,423	154	48.3	21.1	1.3	0.0	272	0.1	10.7	21.0	0.1	-	0.4	-	-	0.5	0.1	223,470	0.2	113.9	0
7 Bellingham	37	8	37	1,345	96	17.0	15.1	10.8	0.0	1,241	0.3	8.6	9.5	10.4	< 0.1	-	-	2.2	1.6	0.5	769,234	0.5	97.0	0
<b>Washington Total</b>	<b>1,313</b>	<b>246</b>	<b>1,295</b>	<b>1,761</b>	<b>43</b>	<b>5.9</b>	<b>8.0</b>	<b>14.3</b>	<b>0.3</b>	<b>68,085</b>	<b>18.4</b>	<b>22.2</b>	<b>8.3</b>	<b>10.4</b>	<b>21.7</b>	<b>48.3</b>	<b>16.7</b>	<b>9.9</b>	<b>21.8</b>	<b>21.3</b>	<b>31,251,679</b>	<b>21.2</b>	<b>99.8</b>	<b>370,324</b>
<b>Total/Average</b>	<b>6,738</b>	<b>1,354</b>	<b>6,591</b>	<b>1,850</b>	<b>18</b>	<b>3.3</b>	<b>4.5</b>	<b>10.7</b>	<b>0.8</b>	<b>370,035</b>	<b>100.0</b>	<b>22.0</b>	<b>9.1</b>	<b>16.5</b>	<b>100.0</b>	<b>100.0</b>	<b>100.0</b>	<b>100.0</b>	<b>100.0</b>	<b>100.0</b>	<b>147,396,195</b>	<b>100.0</b>	<b>104.4</b>	<b>738,322</b>
% Change from Update of 10/96	+3.9	+5.1	+4.0	+1.3	+12.5	0.0	0.0	+3.0	-0.2	+8.0	-0.9	+0.6	+4.7	6.1%	0.1%	21.4%	15.4%	-6.7%	3.3%				161.0%	

<b>Clerks</b>																						
29 San Diego	5	0	5	2,132	2	14.3	32.4	10.3	3.6													
46 Port Hueneme	12	0	12	2,155	-	4.6	28.8	3.4	0.0													
63 Los Angeles/Long Beach	863	3	849	2,507	< 1	0.1	9.8	11.7	0.7													
14 Eureka	3	0	3	***	***	19.3	31.9	0.0	2.9													
34 SF Bay Area & Delta	262	6	255	2,193	5	3.5	6.8	1.3	3.1													
40 Portland	102	0	99	2,358	2	35.1	7.6	1.5	3.2													
23 Tacoma	61	0	60	2,636	-	0.1	40.1	4.8	0.9													
52 Seattle	182	0	181	2,553	3	16.9	17.9	5.2	0.6													
<b>Total/Average</b>	<b>1,490</b>	<b>9</b>	<b>1,464</b>	<b>2,446</b>	<b>2</b>	<b>5.2</b>	<b>12.4</b>	<b>8.2</b>	<b>1.2</b>													
<b>Foremen/Walking Bosses</b>																						
29 San Diego	2	0	2	***	***	0.7	70.8	0.7	0.5													
46 Port Hueneme	6	-	6	1,856	48	0.0	15.3	0.0	0.0													
94 Los Angeles/Long Beach	318	-	315	3,247	< 1	0.1	6.8	0.0	0.2													
91 Northern Calif. Area	74	-	74	2,400	22	0.4	7.6	0.0	1.4													
92 Portland	53	-	52	2,500	17	11.7	13.0	0.0	4.2													
98 Seattle	98	-	96	2,633	3	10.4	16.0	0.0	1.3													
<b>Total/Average</b>	<b>551</b>		<b>545</b>	<b>2,934</b>	<b>6</b>	<b>2.7</b>	<b>9.7</b>	<b>0.0</b>	<b>0.9</b>													



\* Longshore and Clerk hours only. \*\*\* "Annual Hrs Pd" and "Wkly PGP" for groups of less than five individuals are not shown, but the data are included in category averages.