



## Average Annual Earnings Top \$104,000 for 62% of Class "A" Longshore & Clerk Work Force in 1998

Of the 7,232 Class "A" longshore and clerk registrants paid one or more hours in 1998, 4,477 (61.9%) averaged \$104,351 in earnings (on a 52-week basis). These employees each was paid 2,000 or more hours during the payroll year.

This group is composed of 83.5% of the

Class "A" clerk registrants who averaged \$117,617 in 1998 and 56.1% of the Class "A" longshore registered work force who averaged \$99,016 in the same period.

### Earnings Include More than Wages

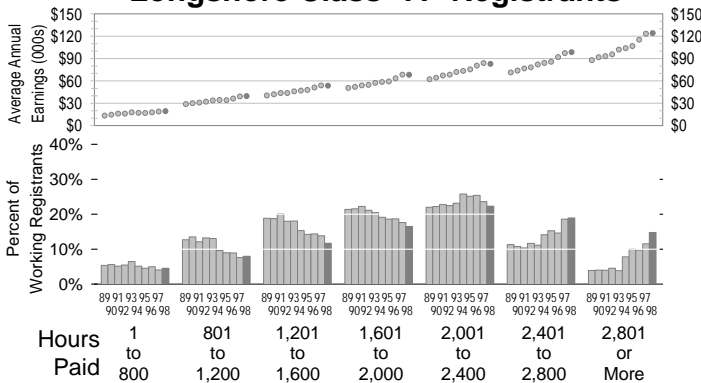
The earnings data used to produce the tables and graphs below include on-the-job

pay (often called simply "wages"), paid holiday payments, vacation pay, pay for travel hours, and taxable meals and fares. Pay Guarantee Plan payments, mileage, and nontaxable meals and fares are excluded.

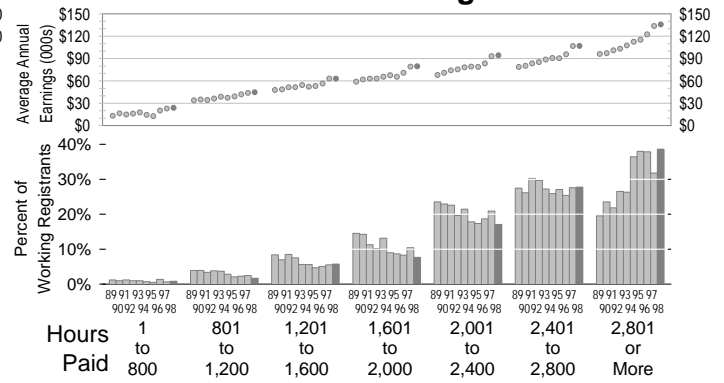
### Payroll Year Differences

The PMA payroll year does not coin-

Longshore Class "A" Registrants



Clerk Class "A" Registrants



	1 or More Hours			1600 or More Hours			2000 or More Hours			2400 or More Hours			2800 or More Hours		
	Number Paid	Average Earnings	Chg from Prev. Yr.	% of Empl.	Average Earnings	Chg from Prev. Yr.	% of Empl.	Average Earnings	Chg from Prev. Yr.	% of Empl.	Average Earnings	Chg from Prev. Yr.	% of Empl.	Average Earnings	Chg from Prev. Yr.
<b>Class "A" Longshore</b>															
1992*	6,152	\$ 53,942	2.3%	59.9	\$ 67,515	3.0%	38.7	\$ 74,499	2.6%	16.2	\$ 83,104	2.3%	4.6	\$ 95,718	2.8%
1993	5,889	56,004	3.8	58.7	70,765	4.8	38.2	77,877	4.5	15.0	87,119	4.8	3.9	101,946	6.5
1994	5,559	62,031	10.8	66.9	74,988	6.0	47.8	81,565	4.7	22.0	91,122	4.6	7.8	103,988	2.0
1995	5,248	64,820	4.5	69.1	77,747	3.7	50.4	84,663	3.8	25.2	94,035	3.2	10.0	106,910	2.8
1996	5,105	68,842	6.2	68.4	83,115	6.9	49.7	90,545	6.9	24.3	101,165	7.6	9.7	115,081	7.6
1997	5,280	75,880	10.2	71.4	89,812	8.1	53.7	96,865	7.0	30.1	107,130	5.9	11.6	123,042	6.9
1998*	5,695	77,642	2.3	72.6	91,997	2.4	56.1	99,016	2.2	33.8	109,656	2.4	14.8	124,185	0.9
<b>Class "A" Clerks</b>															
1992*	1,288	\$ 79,575	3.4%	86.1	\$ 85,859	3.7%	75.9	\$ 88,951	3.7%	56.3	\$ 93,691	3.2%	26.6	\$103,206	2.2%
1993	1,249	82,696	3.9	88.2	88,224	2.8	75.0	92,235	3.7	53.6	97,912	4.5	26.3	107,658	4.3
1994	1,223	89,053	7.7	89.2	95,008	7.7	80.2	98,120	6.4	62.4	103,558	5.8	36.5	112,665	4.7
1995	1,337	91,127	2.3	91.1	96,103	1.2	82.4	99,306	1.2	65.1	104,847	1.2	38.0	115,077	2.1
1996	1,373	96,430	5.8	90.3	102,030	6.2	82.0	105,196	5.9	63.3	111,685	6.5	37.9	122,447	6.4
1997	1,449	104,526	8.4	90.8	109,827	7.6	80.3	113,808	8.2	59.4	121,122	8.4	31.8	133,731	9.2
1998*	1,537	109,042	4.3	91.2	114,398	4.2	83.5	117,617	3.3	66.4	123,623	2.1	38.6	135,720	1.5
<b>Class "A" Longshore &amp; Clerks</b>															
1992*	7,440	\$ 58,380	2.5%	64.4	\$ 71,760	3.2%	45.2	\$ 78,705	2.8%	23.2	\$ 87,559	2.6%	8.4	\$ 99,822	2.6%
1993	7,138	60,674	3.9	63.9	74,982	4.5	44.7	82,097	4.3	21.8	91,765	4.8	7.8	105,320	5.5
1994	6,782	66,904	10.3	70.9	79,530	6.1	53.6	86,030	4.8	29.3	95,900	4.5	13.0	108,381	2.9
1995	6,585	70,161	4.9	73.5	82,364	3.6	56.9	88,969	3.4	33.3	98,320	2.5	15.7	110,930	2.4
1996	6,478	74,689	6.5	73.1	88,070	6.9	56.6	95,046	6.8	32.6	105,494	7.3	15.7	118,851	7.1
1997	6,729	82,049	9.9	75.6	94,989	7.9	59.5	101,794	7.1	36.4	112,045	6.2	15.9	127,642	7.4
1998*	7,232	84,316	2.8	76.5	97,672	2.8	61.9	104,351	2.5	40.7	114,500	2.2	19.9	128,957	1.0

\* Payroll years 1992 and 1998 each had 53 payroll weeks. Earnings data have been annualized to 52 weeks for comparison with other years.

1 or More Hours				1600 or More Hours			2000 or More Hours			2400 or More Hours			2800 or More Hours		
Number Paid	Average Earnings	Chg from Prev. Yr.	% of Empl.	Average Earnings	Chg from Prev. Yr.	% of Empl.	Average Earnings	Chg from Prev. Yr.	% of Empl.	Average Earnings	Chg from Prev. Yr.	% of Empl.	Average Earnings	Chg from Prev. Yr.	
<b>Walking Bosses/Foremen</b>															
1992*	511	\$108,944	1.8%	92.4	\$113,638	3.8%	84.9	\$116,791	4.1%	73.2	\$120,398	2.9%	43.8	\$128,880	2.3%
1993	495	112,317	3.1	92.5	116,858	2.8	84.2	120,351	3.0	69.9	125,693	4.4	39.4	135,553	5.2
1994	510	121,266	8.0	93.5	125,839	7.7	87.6	128,856	7.1	75.1	134,344	6.9	51.4	143,948	6.2
1995	518	124,194	2.4	93.6	128,904	2.4	86.9	132,740	3.0	75.5	137,975	2.7	50.8	148,374	3.1
1996	531	129,611	4.4	91.9	136,195	5.7	87.0	139,034	4.7	75.3	144,286	4.6	48.6	155,759	5.0
1997	562	139,703	7.8	93.4	145,834	7.1	89.1	148,477	6.8	79.5	153,191	6.2	62.3	161,426	3.6
1998*	577	147,360	5.5	94.3	152,939	4.9	89.4	156,251	5.2	81.8	160,910	5.0	67.1	168,713	4.5
<b>Class "A" Longshore &amp; Clerks and Foremen</b>															
1992*	7,951	\$ 61,630	2.5%	66.2	\$ 75,515	3.1%	47.7	\$ 83,062	2.8%	26.4	\$ 93,416	2.2%	10.7	\$107,498	2.4%
1993	7,633	64,023	3.9	65.7	78,806	4.4	47.2	86,522	4.2	24.9	97,944	4.8	9.9	113,160	5.3
1994	7,292	70,706	10.4	72.5	83,709	6.2	56.0	90,717	4.8	32.5	102,115	4.3	15.7	116,534	3.0
1995	7,103	74,102	4.8	75.0	86,602	3.5	59.1	93,661	3.2	36.4	104,316	2.2	18.2	118,535	1.7
1996	7,009	78,850	6.4	74.5	92,568	6.9	58.9	99,970	6.7	35.8	111,671	7.1	18.2	126,325	6.6
1997	7,291	86,493	9.7	76.9	99,748	7.8	61.7	106,989	7.0	39.7	118,392	6.0	19.5	135,964	7.6
1998*	7,809	88,974	2.9	77.8	102,618	2.9	63.9	109,715	2.5	43.7	120,913	2.1	23.3	137,396	1.1

\* Payroll years 1992 and 1998 each had 53 payroll weeks. Earnings data have been annualized to 52 weeks for comparison with other years.

cide exactly with a calendar year: the 1998 payroll year began on December 20, 1997, and ended December 25, 1998. Some payroll years such as 1992 and 1998 require one-week adjustments to coincide with tax year periods.

The earnings data used in the tables and charts shown here have been adjusted by multiplying by the factor 52/53 to allow meaningful comparison with 52-payroll week years.

#### Average Annual Earnings Tables

The tables on pages 1 and 2 show the average annual earnings (annualized to 52 weeks, if required) for Class "A" longshore and clerk registrants and for Walking Boss/Foremen registrants by year since 1992. The first set of columns, labeled 1 or

More Hours, shows the number of registrants paid hours in the payroll year (Number Paid), the average annual earnings for the group, and the percentage increase in that average from the previous year.

The next set of columns in each table presents data on those registrants who were paid 1600 or More Hours in the payroll year. The column labeled % of Empl. shows the percent of the number of registrants paid one or more hours who received at least 1,600 hours. The next two columns show their average earnings for the year and the change from the previous year.

Each set of columns from left to right includes smaller numbers of employees as the minimum number of hours required for inclusion in the group increases in units of 400 hours.

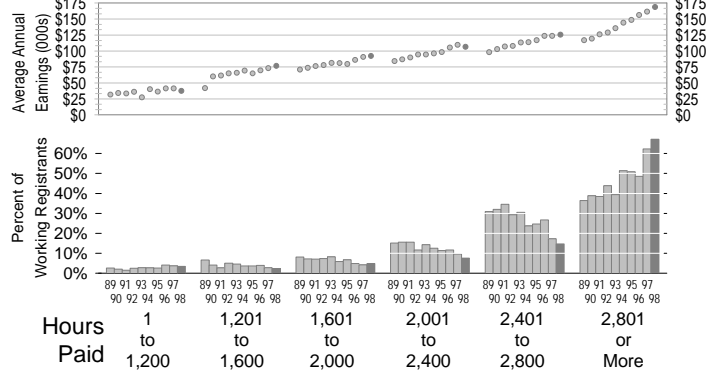
#### Base Wage Rate Changes

The base wage rate for longshore and clerk work was \$24.68 in the first half of the 1997 payroll year and \$25.68 in the last half, producing an average of \$25.18. The base wage rate was \$25.68 per hour for the entire 1998 payroll year, an increase of 1.99% above the 1997 average.

#### Over \$160,000 Averaged by 82% of Foreman Registrants

Nearly 82%, or 472, of the 577 walking boss/foreman registrants who were paid one or more hours in 1998 received pay for 2,400 or more hours, and this group aver-

### Foreman & Walking Boss Registrants



aged \$160,910 each (on a 52-week basis). This is an increase of 5.0% above the equivalent group in 1997. All of the foreman registrants (who were paid any hours) averaged \$88,974 each in the year.

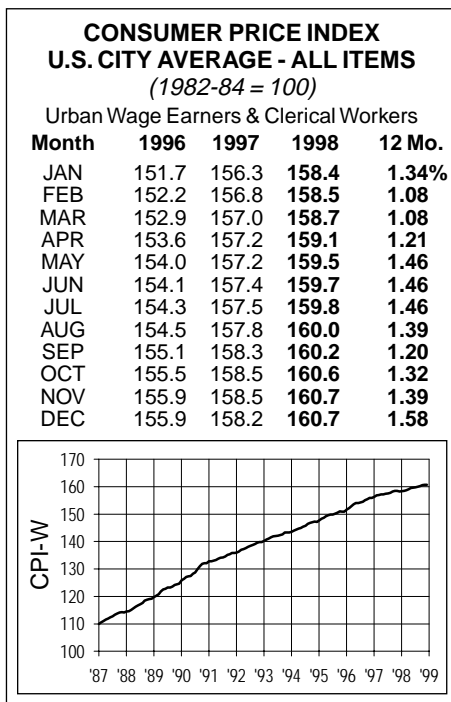
#### Ten-Year Graphs

The three pairs of graphs on pages 1 and 2 show average annual earnings by payroll year for each of the 10 years 1989 through 1998. The registrants are divided into several groups based on the number of hours paid to each employee in the year shown.

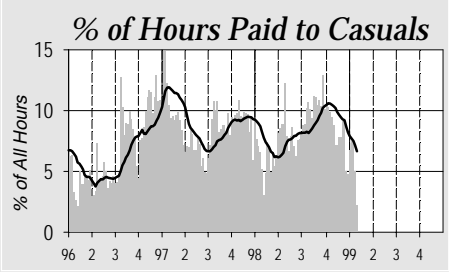
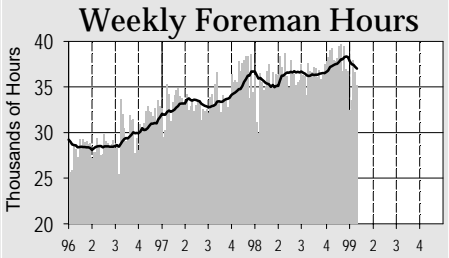
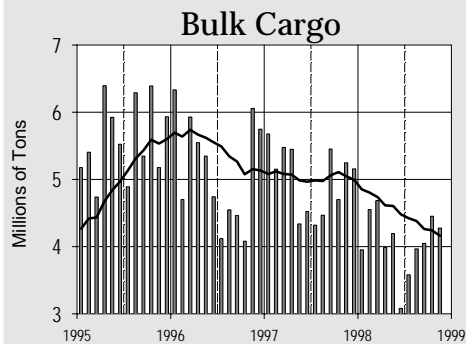
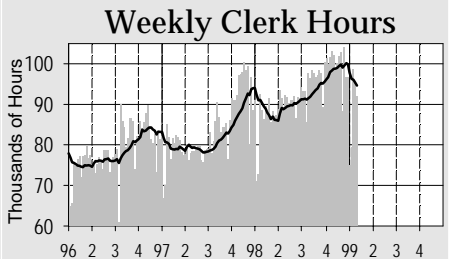
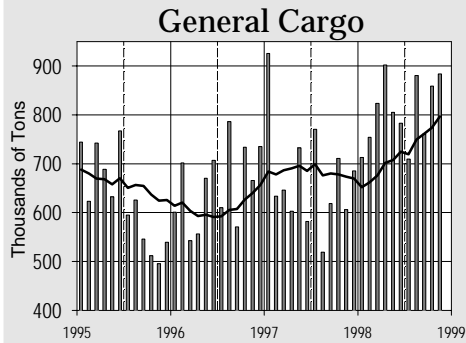
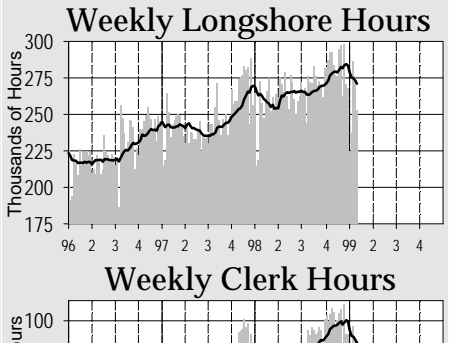
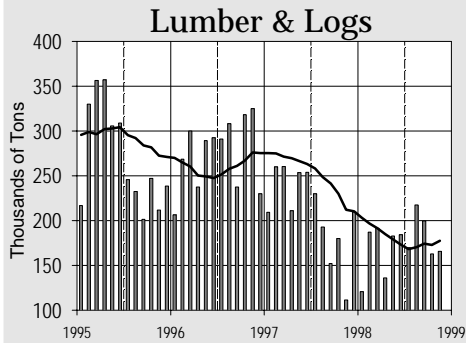
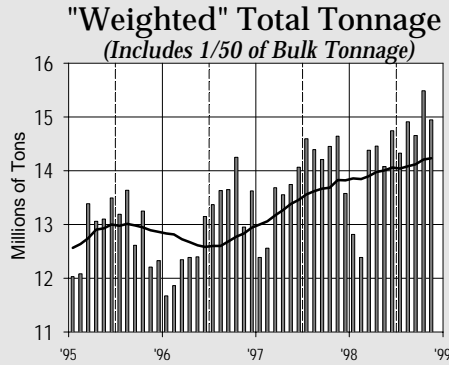
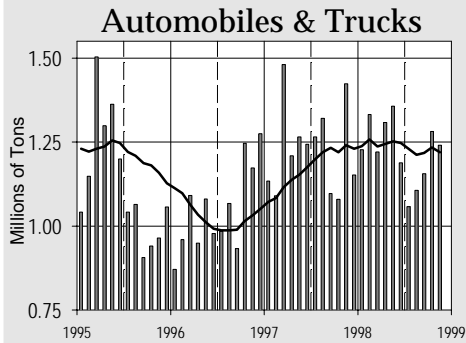
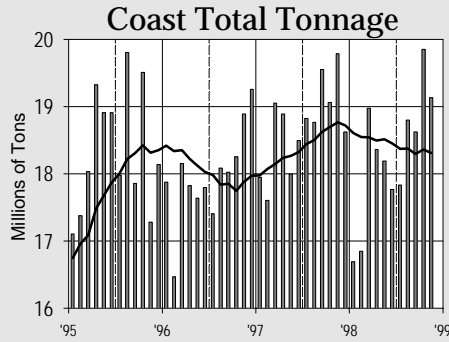
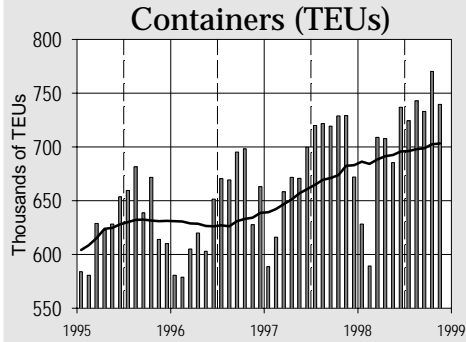
In the lower graph of each pair, a vertical bar represents the percentage of the registrants who were paid the given number of hours—e.g., 1 to 800, 801 to 1,200, etc.—in the payroll year. The bar for 1998 in each hours group is darker than the previous years.

The shaded circles in the upper graph of each pair show the average annual earnings for the group represented in the corresponding bar of the lower graph.

NOTE: The registrants include individuals who retired during the year as well as actives absent from the work force on disability, etc. Transferees from longshore to clerk or foreman status during the year are included in the class to which they were transferred with their total hours and earnings for the year.

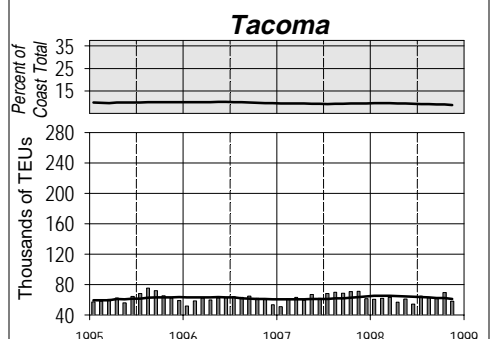
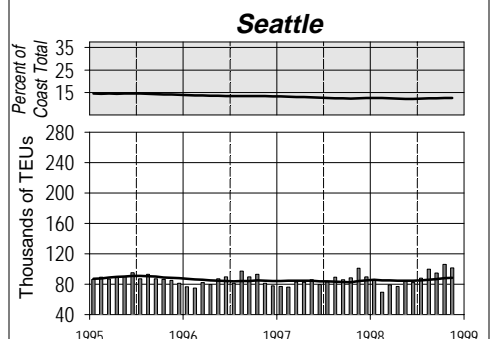
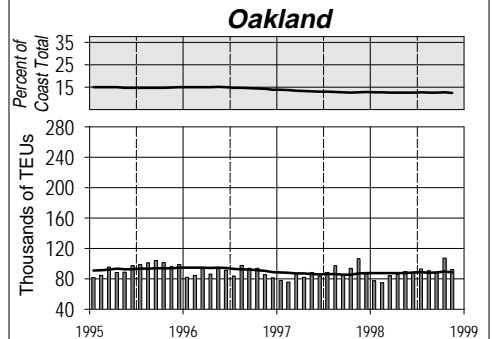
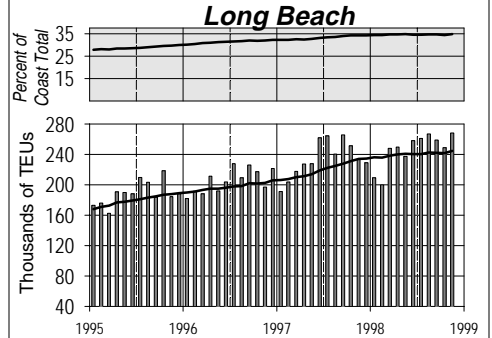
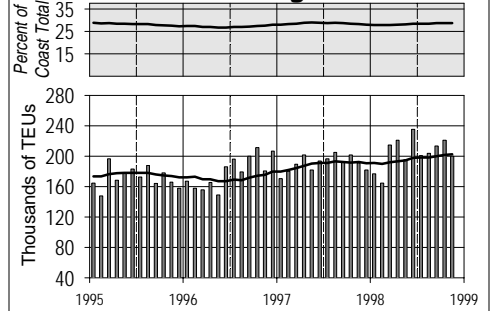


## Monthly Tonnage by Reporting Category and Weekly Hours by Occupation Code Type



Bars represent monthly tonnage or weekly hours; solid lines represent 12-month or 13-week running averages.

## Major Container Ports: Monthly TEUs Reported & Percent of Coast Total TEUs



Shaded graphs show 12-month moving averages of TEUs reported in the port as a % of the coast total. Vertical bars represent TEUs reported in the port each month; lines are 12-month moving averages.

