



1999 Annual Safety Awards Dinner and Presentations

The 1999 West Coast Annual Safety Awards presentations will be held in March 2000 in each of the Areas. Each Area banquet will recognize and honor those companies with the lowest accident injury incidence rates in calendar year 1999

Awards are presented based on company performance standings in each Area and for Coastwide performance standings.

Special awards will be presented to companies and ILWU locals in recognition of significant reductions in injury incidence rates.

Individuals who have rescued or prevented others for being seriously injured on the job will also be recognized.

Oregon Area

Date: Wednesday, March 1, 2000
Time: 6:00 p.m. Reception, 7:00 p.m. Dinner, 8:00-10:00 p.m. Awards Ceremony

Location: Riverview Ballroom
Address: Double Tree Hotel (Columbia River) 1401 N. Hayden Island Drive Portland, Or 97217

Washington Area

Date: Thursday, March 2, 2000
Time: 6:00 p.m. Reception, 7:00 p.m. Dinner, 8:00-10:00 p.m. Awards Ceremony

Location: Seattle Airport Hilton
Address: 17620 Pacific Highway South Seattle, Washington 98188

Southern California Area

Date: Friday, March 3, 2000
Time: 6:00 p.m. Reception, 7:00 p.m. Dinner, 8:00-10:00 p.m. Awards Ceremony

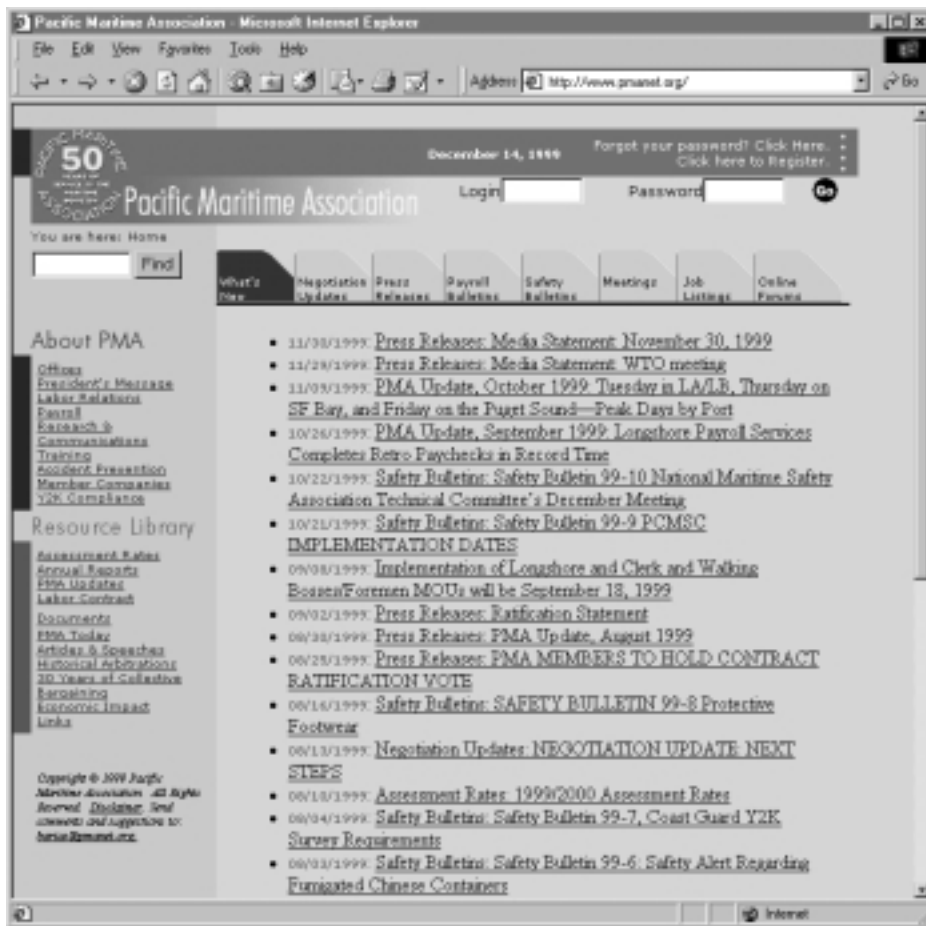
Location: Hyatt Regency
Address: 200 South Pine Ave Long Beach, Ca 90802

Northern California Area

Date: Monday, March 6, 2000
Time: 6:00 p.m. Reception, 7:00 p.m. Dinner, 8:00-10:00 p.m. Awards Ceremony

Location: International Ball Room
Address: Oakland Airport Hilton 1 Hegenberger Road Oakland, CA 94614

www.pmanet.org Evolves into a Dynamic Database-driven Website



In the past year, pmanet.org has evolved into a dynamic, content-focused and database-driven website. The site has been reorganized to minimize the number of clicks a user has to make to view content: a visitor is no more than two clicks away from any page in the website.

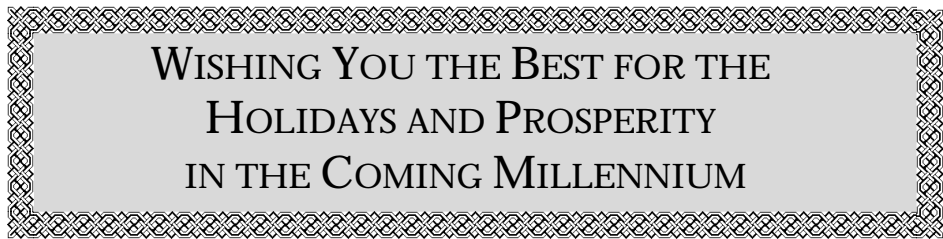
Additionally, it has become easier to add content to the database and to manage the extensive list of members that have signed up to access the "Members Only"

section of the website.

Extensive changes were made throughout the site, most notably in its home page. The layout of the site has also been improved for easier navigation, and the latest information is always available in chronological order under the "What's New" section.

Dynamic and Static Pages

Information that resides in the database,



such as press releases, bulletins, meetings, and job listings are accessible, as tabs, at the top of the page.

Static pages, those that do not require regular updates or changes, are grouped into two sections that are shown in the column on the left hand side of each page. The section headings are labeled “About PMA” and “Resource Library.”

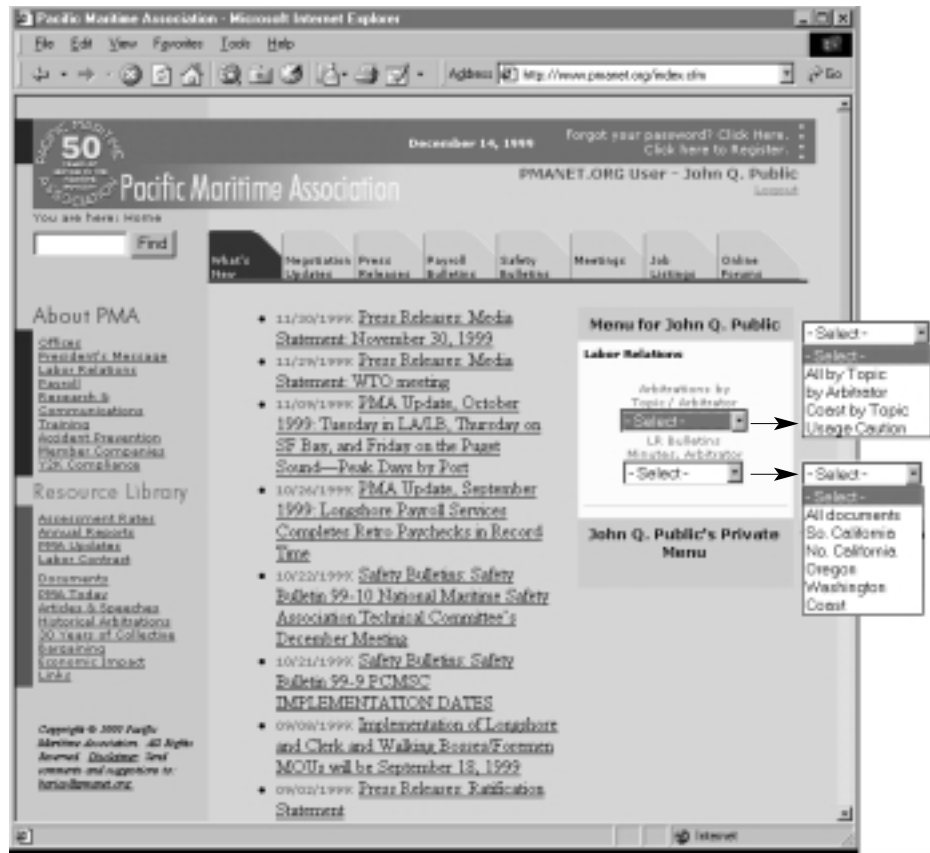
Information about the Pacific Maritime Association and its departments are under the “About PMA” section. Explanations of the various functions of each department and the different PMA offices in the West Coast can be found in this section. A list of PMA member companies and links to their websites are included.

The “Resource Library” includes many PMA publications in electronic format as well as historical information about the organization. *PMA Update*, the company’s monthly newsletter, can be downloaded from this section, usually before printed copies are available. PMA’s annual reports and various ILWU-PMA labor agreements are also available.

The current PMA Assessment Rates and links to other industry-related websites are also included. Most of the online documents are available in Adobe Acrobat® format, a free browser plug-in which allows the viewer to see and print each document as it was originally formatted for printing.

The Website Database Engine

Prior to the installation of the new website database engine, all changes to the website had to be made by the administrator. This meant that any change that a department wanted to make to the website had to



be submitted to the administrator and the administrator then had to physically make the change.

The new database engine allows each PMA department to directly add or modify the database, resulting in more immediate access to updated information.

Date-based content publishing has also been added to the database engine. This feature allows PMA Staff further administrative controls over records entered by specifying dates that entries are to show on the website.

The New Members’ Net

As an added service to member companies, the PMA website includes a Members’ Net section. This section is intended for employees of PMA member companies that have been approved by the member company to use the PMA Members’ Net. Entry into the Members’ Net affords the user access to PMA’s extensive databases of labor arbitrations and Labor Relations Committee meetings. Data sorting and display options are also available.

When the Members’ Net was first rolled out, there were only a few databases and services available. Many new features will be added that are job specific. The new Members’ Net welcomes each entrant with a menu that will be capable of being customized for that individual user.

The Members’ Net is also being used by the PMA Payroll department to distribute payroll data to member companies and to

participating non-member companies that use the payrolling system. Payroll participating non-member companies may use the Members’ Net but only to retrieve the Payroll Data.

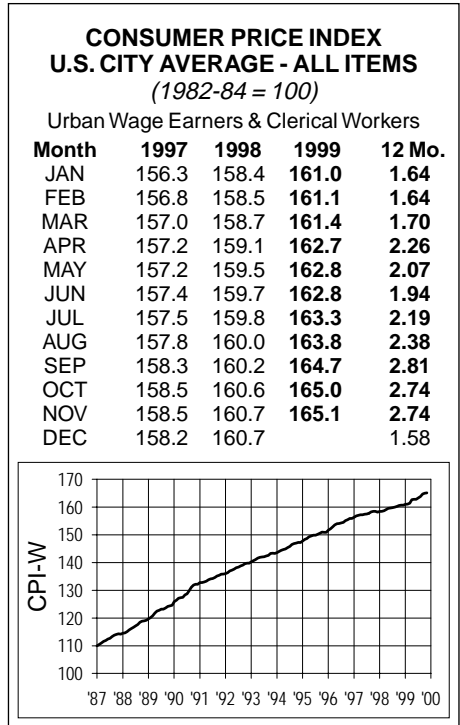
Another new feature for members is the addition of the “Forgot your password? Click here” button located on the upper right corner of the page. This feature allows a registered user to retrieve a forgotten password while maintaining system security. No more waiting for the internet administrator to email it.

Coming Soon to Your Website

As PMA continues to make the website more robust, the Members’ Net will soon allow access to new hours and tonnage databases.

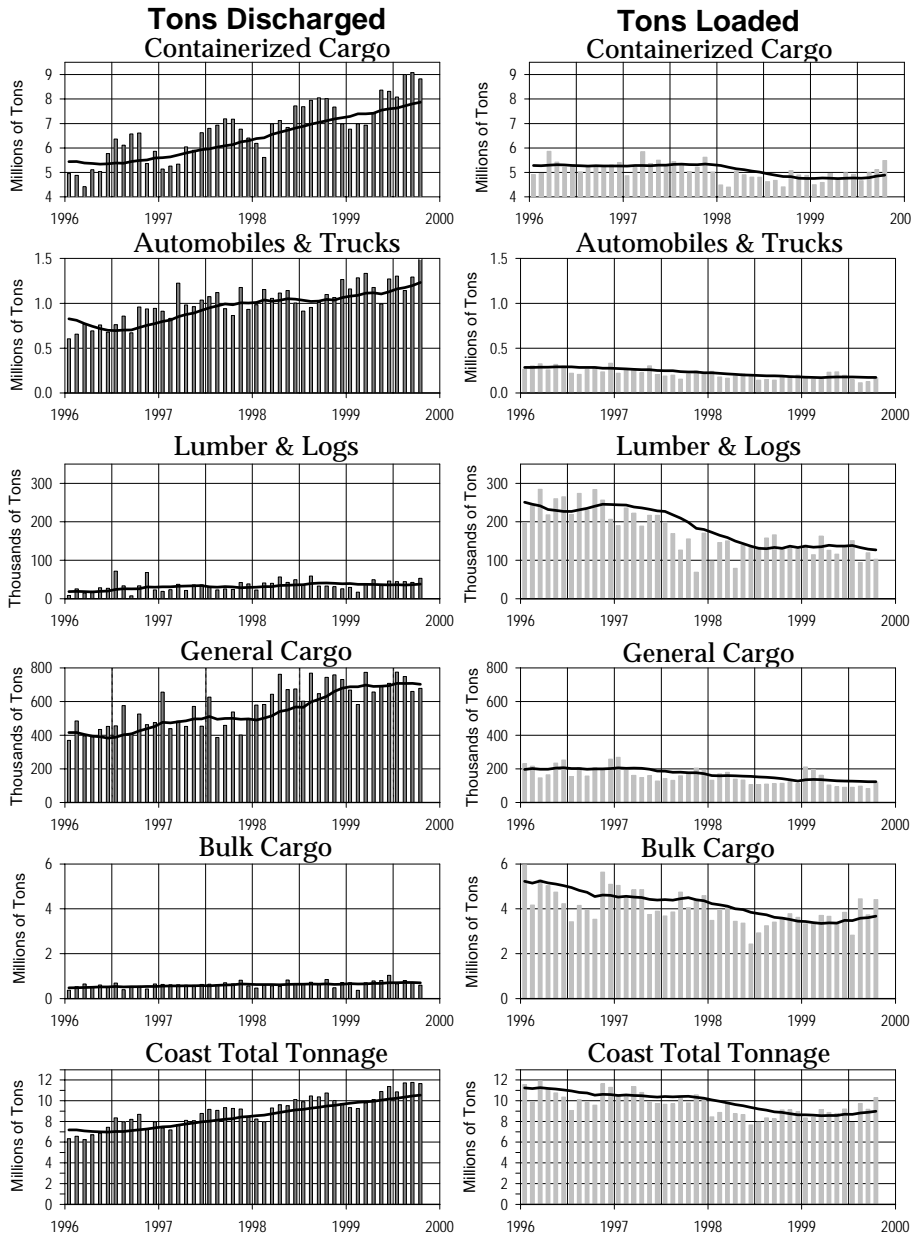
A new web-based Coastwise Tonnage Reporting System and a Los Angeles/Long Beach Allocations system are currently being tested that will allow data input by registered users through their internet browsers.

The Allocations application will allow Los Angeles and Long Beach Employers to place their labor orders to the PMA Allocators through the internet. Under the present system employers use the telephone to place labor orders with the allocator and frequently must wait while another employer is giving the PMA allocator labor orders. The internet allocations program would eliminate the call-in process and allow for jobs scheduling up to 30 days in advance.



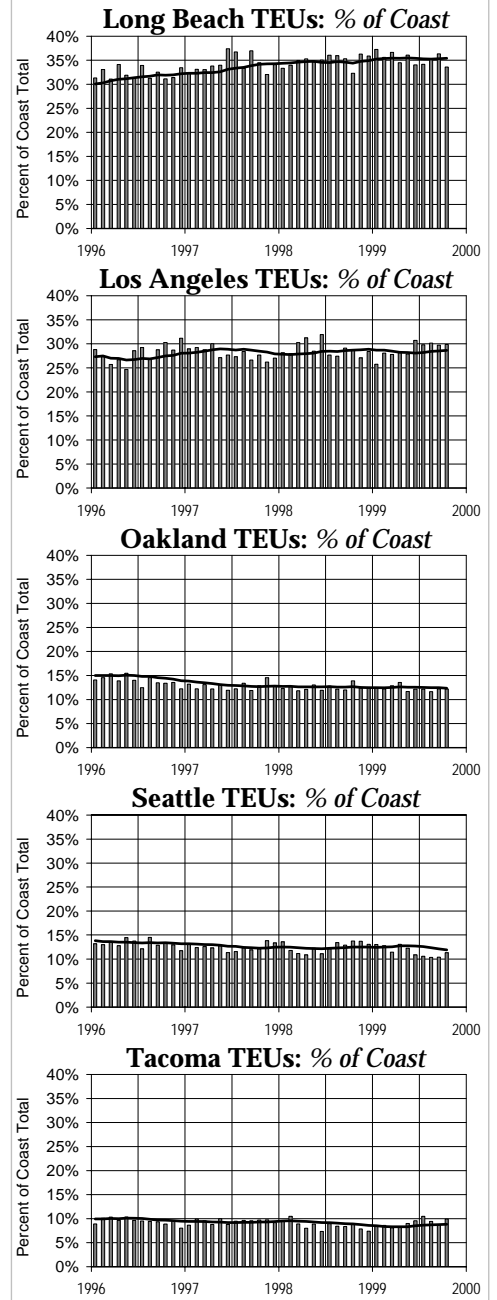
Monthly Tonnage by Reporting Category: Discharged vs. Loaded

Actual Tons Reported by Month



In the Tonnage graphs above, bars represent monthly totals, and the lines show 12-month moving averages.

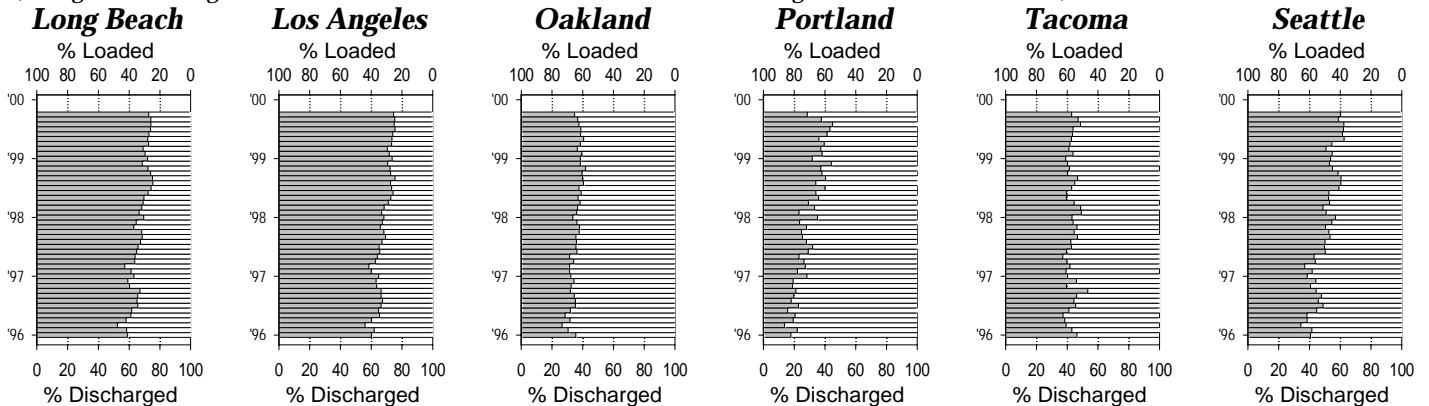
Major Container Ports: Percent of Coast Total TEUs



"Weighted" Tonnage: % Discharged vs. % Loaded

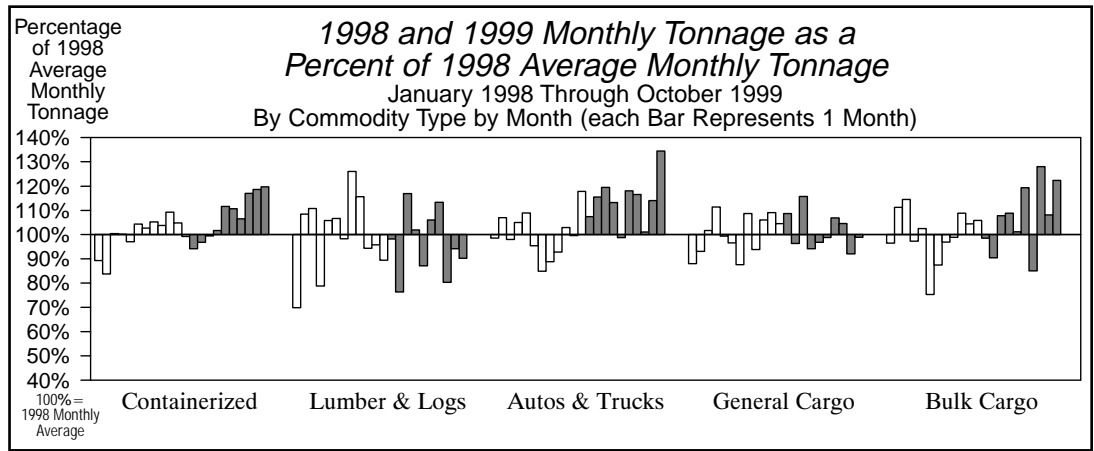
("Weighted" Tonnage = Containerized + 1/6 of Autos & Trucks + Lumber & Logs + General + 1/50 of Bulk)

% Discharged % Loaded



ILWU LOCAL/PORT AREA	REGISTRATION		STATS (For 52 Payroll Weeks)							PORT HOURS (Year-to-date)					TONNAGE BY PORT AREA (For 12 months-to-date & YTD)									
	(At12/9/99)		(Ending 12/4/99)		Hours Paid:					Hours Paid at					% of Category Coast Total (12 Months-to-Date)					% of 1999 YTD				
	Class	Number	Annual	Wkly	Out of	Other	Cas-	Inac-	P/R Wks	1-49, '99	Avg. Wkly	% Cst	Occ Codes	Exp.	Cont'r	Lmbr	Autos	Other	Bulk	1999 YTD	Coast	'99 as a	Cstwise	
TOTAL	"B"	Working	Hrs Pd	PGP	Port	Local	uals	tives	Avg. Wkly	% Cst	Clk	Frm	Rates*	RU's	Logs	Trucks	Gen'l	Cargo	TOTAL	(Jan-Oct)	Total	% of '98	Loaded	
NO.	NO.	NO.	HRS	\$	%	%	%	%	HRS	%	%	%	%	%	%	%	%	%	%	TONS	%	%	TONS	
Longshorem																								
Southern California																								
29 San Diego	53	19	51	2,408	< 1	6.7	7.6	38.6	0.0	4,102	1.0	9.6	12.4	34.8	-	4.1	12.4	2.1	3.1	1.7	3,526,961	1.8	141.0	0
13 Los Angeles/Long Beach	4,043	835	3,993	2,124	< 1	0.3	0.6	6.6	0.7	244,994	59.2	25.0	9.8	21.8	64.1	6.6	34.4	52.0	24.3	52.1	102,356,382	52.1	107.0	141,609
46 Port Hueneme	81	11	79	2,051	1	5.5	8.0	40.7	0.0	6,146	1.5	15.8	6.4	31.7	0.1	-	11.4	6.9	0.1	1.2	2,337,885	1.2	118.8	0
Southern California Total	4,177	865	4,123	2,126	< 1	0.5	0.9	8.1	0.7	255,242	61.7	24.5	9.8	22.3	64.2	10.7	58.2	61.0	27.5	55.0	108,221,228	55.1	108.1	141,609
Northern California																								
10 San Francisco Bay Area	986	168	931	1,797	< 1	1.1	0.7	4.0	2.6	49,676	12.0	26.5	8.2	19.7	12.6	0.1	5.2	7.3	2.2	9.4	18,490,056	9.4	106.0	598
54 Stockton	54	19	54	1,620	39	8.0	4.2	11.2	2.4	2,344	0.6	19.1	7.4	5.3	-	-	-	1.4	3.0	0.7	1,405,472	0.7	118.2	0
18 Sacramento	22	1	22	1,684	132	9.2	17.2	21.8	3.0	1,596	0.4	24.8	6.8	13.7	-	0.1	-	2.0	1.2	0.3	673,560	0.3	105.0	3,138
14 Eureka	30	0	30	1,167	243	33.2	6.5	10.1	3.0	651	0.2	12.2	11.4	9.4	< 0.1	4.4	-	2.0	0.7	0.3	570,025	0.3	140.6	0
Northern California Total	1,092	188	1,037	1,767	12	2.2	1.5	5.0	2.6	54,267	13.1	26.0	8.2	18.8	12.6	4.6	5.2	12.7	7.0	10.8	21,139,113	10.8	107.4	3,736
Oregon																								
12 North Bend/Coos Bay	89	13	84	1,103	256	51.0	0.3	0.5	4.5	1,082	0.3	10.7	9.1	0.3	< 0.1	6.8	-	0.1	3.8	0.9	1,873,772	1.0	86.4	48,743
53 Newport	8	1	8	798	430	74.6	23.3	0.4	0.3	43	0.0	5.6	1.3	6.6	-	0.4	-	-	-	< 0.1	8,673	0.0	178.2	0
50 Astoria	43	0	43	742	473	86.9	4.6	0.2	0.4	71	0.0	0.0	0.2	0.2	-	1.3	-	-	-	< 0.1	18,988	0.0	49.7	475
8 Portland	459	58	448	1,826	8	3.2	11.9	2.7	3.6	22,265	5.4	14.5	7.7	7.7	2.4	2.8	19.0	9.2	21.8	8.2	15,855,201	8.1	108.2	39,089
4 Vancouver, WA	144	42	140	1,804	12	12.6	12.2	6.9	3.2	6,482	1.6	13.8	6.8	10.7	< 0.1	0.1	3.2	3.6	8.1	2.2	4,170,158	2.1	103.2	0
21 Longview, WA	184	21	182	2,001	9	21.6	7.6	5.7	3.0	8,691	2.1	9.0	8.0	7.4	< 0.1	31.2	-	6.6	13.6	3.6	7,079,919	3.6	115.7	51,250
Oregon Total	927	135	905	1,730	58	13.8	10.6	4.0	3.4	38,634	9.3	13.0	7.6	7.9	2.4	42.6	22.2	19.5	47.4	14.9	29,006,711	14.8	107.3	139,557
Washington																								
24 Aberdeen	66	0	66	1,444	167	23.9	10.7	5.4	1.5	1,844	0.4	6.3	6.4	2.1	< 0.1	15.1	-	0.4	-	0.1	303,667	0.2	104.9	177,313
27 Port Angeles	53	0	53	697	537	68.3	5.2	0.9	1.4	284	0.1	8.6	8.0	0.1	-	1.8	-	-	0.4	0.1	219,672	0.1	106.5	66,527
51 Port Gamble	11	0	11	429	704	83.6	0.0	0.0	11.4	14	0.0	0.0	0.0	0.0	-	-	-	-	-	-	0	0.0	-	0
47 Olympia	28	5	28	703	348	46.2	18.4	5.4	0.5	277	0.1	3.5	19.5	7.3	-	1.0	-	< 0.1	< 0.1	< 0.1	33,225	0.0	28.7	100
23 Tacoma	491	111	489	1,949	< 1	1.4	3.4	14.9	0.0	28,532	6.9	21.4	8.8	13.3	8.9	17.7	10.4	2.4	11.2	9.3	18,757,913	9.5	115.9	0
19 Seattle	575	124	567	1,844	< 1	2.0	4.1	9.1	1.0	32,014	7.7	25.6	8.0	8.5	11.8	0.4	4.0	3.0	4.1	9.1	17,680,143	9.0	106.1	49,344
32 Everett	48	0	46	1,159	210	16.1	9.6	7.1	5.0	1,271	0.3	6.8	8.4	3.9	< 0.1	5.1	-	0.1	0.6	0.2	366,613	0.2	83.9	15,022
25 Anacortes	13	0	13	1,122	247	42.3	26.4	2.4	1.5	294	0.1	10.1	14.8	2.6	< 0.1	1.0	-	-	0.4	0.1	213,224	0.1	76.7	0
7 Bellingham	32	0	31	1,062	231	9.7	12.6	9.3	0.5	925	0.2	9.4	11.3	10.1	-	-	-	0.7	1.4	0.3	636,267	0.3	104.1	1,440
Washington Total	1,317	240	1,304	1,730	59	5.0	4.5	11.3	0.7	65,454	15.8	22.4	8.4	10.2	20.7	42.1	14.4	6.8	18.1	19.3	38,210,724	19.4	109.9	309,746
Total/Average	7,513	1,428	7,369	1,957	19	2.8	2.6	7.8	1.2	413,608	100.0	23.3	9.2	18.5	100.0	100.0	100.0	100.0	100.0	100.0	196,577,776	100.0	108.2	594,648
% Change from Update of 12/98	+0.4	-15.1	+0.6	+5.4	-9.5	+0.3	-0.4	-1.8	+0.6	-6.9	+0.5	+0.2	-2.0		7.1%	-4.2%	14.0%	7.1%	2.9%	6.5%			-27.1%	

Clerks																						
29 San Diego	4	0	4	***	***	9.6	37.3	13.1	0.0													
46 Port Hueneme	12	0	12	2,568	-	2.3	31.8	8.4	0.0													
63 Los Angeles/Long Beach	919	2	906	2,685	< 1	0.1	11.0	13.3	1.1													
14 Eureka	3	0	3	***	***	17.0	43.8	0.0	0.6													
34 SF Bay Area & Delta	266	9	262	2,383	2	2.6	9.1	2.0	3.6													
40 Portland	93	0	90	2,510	3	33.3	13.0	1.5	2.0													
23 Tacoma	71	0	71	2,606	-	0.7	38.6	1.7	3.1													
52 Seattle	162	0	160	2,563	-	13.8	12.1	2.9	2.2													
Total/Average	1,530	11	1,508	2,601	< 1	3.9	13.0	9.3	1.7													
Foremen/Walking Bosses																						
29 San Diego	2	0	2	***	***	0.3	71.9	3.5	0.0													
46 Port Hueneme	5	-	5	2,464	1	0.2	39.7	0.6	0.0													
94 Los Angeles/Long Beach	337	-	333	3,472	< 1	0.1	4.5	0.0	2.9													
91 Northern Calif. Area	71	-	70	2,653	26	0.6	16.6	0.0	3.0													
92 Portland	42	-	42	2,511	11	15.8	22.4	0.0	9.0													
98 Seattle	94	-	92	2,622	13	10.2	14.2	0.0	1.8													
Total/Average	551		544	3,139	6	2.5	10.0	0.1	3.1													



* Longshore and Clerk hours only. *** "Annual Hrs Pd" and "Wkly PGP" for groups of less than five individuals are not shown, but the data are included in category averages.