



West Coast Dry Cargo Imports Top \$213 Billion in 1999

The value of all U.S. waterborne dry cargo imports to the 48 contiguous states in 1999 was \$381.7 billion. West Coast ports handled 55.8% of the U.S. total with a value of \$213 billion. These figures were compiled from government waterborne trade data.

The U.S. Army Corps of Engineers and the Maritime Administration (MarAd) assumed responsibility for the U.S. Foreign Waterborne Transportation Statistics Program in September 1998. Prior to that time, the Bureau of the Census maintained the waterborne trade statistics program. Imports and Exports are regulated by different governmental agencies. The data generated by the agencies overseeing imports and exports are available for purchase on a monthly, quarterly, and annual basis. MarAd had the operational responsibility for developing this data.

PMA subscribes to both the annual import and the annual export databases. The databases contain U.S. foreign trade cargo data by commodity classification. The data also show the type of service, U.S. and foreign port, country of origin or destination, value, weight, and the percent the cargo that was containerized.

All U.S. trade commodity data is classi-

fied based on the international Harmonized System (HS), the global classification system that is used to describe most world trade in goods.

The version of the classification system used by the U.S. is the Harmonized Tariff System (HTS). The HTS classifies cargo to down to the 6-digit level. Countries that have agreed to use the HTS classification system are further allowed to define commodities at a more detailed level. The U.S. further defines products using an additional 4 digits which generates a 10-digit HTS Code.

The U.S. International Trade Commission administers import codes, and the U.S. Customs Service is responsible for administering tariffs and for processing import cargo entries. For the purposes of this overview, cargo will be classified to the 2-digit HS level.

The import database permits nearly unlimited views of how a port, customs district,

or coastal district compares to others in terms of cargo value and cargo weight.

A specific import cargo (HS classification to 6 digits) may be selected and the value of that import cargo shown for every port in the U.S. Or, a specific country may be selected and all cargo types imported from that country may be shown by port of entry.

Table 1 shows the 25 top West Coast import commodities based on value. Not surprisingly, consumer products dominate the top 25 of the 100 cargo import classifications.

Table 2 shows the import cargo value for every port on the West Coast. Note that the port designations differ from PMA designations in several instances. Again, as expected, Long Beach and Los Angeles account for more than 66% of the value of all West Coast imports. The two ports also handle the most cargo in terms of weight.

Table 3 shows the import value by country

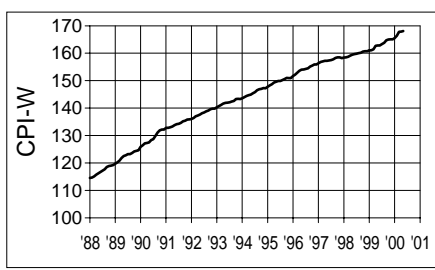
Table 1: West Coast 1999 Waterborne Cargo Imports, Value by Commodity Classification

HS2 Code	Description/Examples	Value	Pct of Total	Not in Cont'rs
84	Machinery, Appliances, Computers, Engines	\$38,263,530,462	18.0%	5.0%
87	Vehicles	35,136,402,952	16.5	58.2
85	Sound Equip., TV Equip., Electrical Machinery	32,092,435,412	15.1	3.9
95	Toys, Games, and Sports Equipment	11,614,567,334	5.5	0.7
62	Apparel Articles Not Knit	10,053,640,980	4.7	1.0
64	Footwear	8,864,950,216	4.2	0.4
61	Apparel Articles knit or crochet	8,511,189,171	4.0	0.9
94	Furniture, bedding, lamps, filing cabinets	7,183,583,343	3.4	0.3
90	Optic, Photo, medic or surgical instruments	6,409,886,177	3.0	2.1
39	Plastics and Articles thereof	4,660,091,436	2.2	1.2
73	Articles of Iron or Steel, tubes, pipe, cable, etc.	3,907,657,107	1.8	22.7
42	Leather, Saddlery, Handbags, Jackets, etc.	3,722,016,592	1.7	1.0
40	Rubber, tires, tubes, latex, etc.	3,338,244,155	1.6	0.4
03	Fish, Crustaceans & Aquatic Invertebrates	2,041,310,628	1.0	1.6
63	Textiles, bed linen, towels, blankets, tarps	1,777,959,231	0.8	0.6
72	Iron and Steel, Flat rolled, bars, rods, beams	1,744,539,799	0.8	88.1
82	Tools, Cutlery	1,732,172,730	0.8	1.2
44	Wood, Articles of Wood, Charcoal	1,727,425,175	0.8	66.7
88	Aircraft, Spacecraft, and parts thereof	1,685,243,360	0.8	2.2
83	Misc Metal Articles, Hinges, hooks, bells, locks	1,616,077,582	0.8	1.0
48	Paper, Paperboard, and articles thereof	1,498,063,262	0.7	41.2
29	Organic Chemicals	1,463,978,467	0.7	8.3
96	Miscellaneous Manufactured articles	1,430,860,321	0.7	1.4
69	Ceramic Products	1,221,909,860	0.6	0.3
22	Beverages, Spirits and Vinegar	1,130,648,094	0.5	3.5
	All Other Classifications	20,198,596,438	9.5	66.9
West Coast Total Import Value		\$213,026,980,284	100.0%	

**CONSUMER PRICE INDEX
U.S. CITY AVERAGE - ALL ITEMS
(1982-84 = 100)**

Urban Wage Earners & Clerical Workers

Month	1998	1999	2000	12 Mo.
JAN	158.4	161.0	165.5	2.80
Feb	158.5	161.1	166.4	3.29
Mar	158.7	161.4	167.8	3.97
Apr	159.1	162.7	167.9	3.20
May	159.5	162.8	168.1	3.26
Jun	159.7	162.8		1.94
Jul	159.8	163.3		2.19
Aug	160.0	163.8		2.38
Sep	160.2	164.7		2.81
Oct	160.6	165.0		2.74
Nov	160.7	165.1		2.74
Dec	160.7	165.1		2.74



of origin. Japan remains the largest source of imports for the West Coast followed closely by China. (Hong Kong is still shown separately in 1999.) It is interesting to note that five European countries are among the top 20 sources of import cargo through the West Coast.

Table 4 shows the value of all U.S. imports in 1999 and the country of origin by the coast of entry. Based on waterborne cargo, Japan ranks as the top U.S. trading partner as well as the top West Coast trading partner. A sizeable percentage of imports through the Atlantic and Gulf coasts also come from Japan.

Table 4 illustrates how distance plays a major role in the selection of a port of entry. European and South American imports generally go to the Atlantic and Gulf Coasts while Asian imports generally go to the West Coast. It is interesting that India, which is about equidistant from the east and west coasts of the U.S., more closely divides the cargo imports between the two coasts than does any European or Pacific Rim country.

The next issue of *PMA Update* will present an overview of U.S. export cargo.

For further information about Foreign Trade, visit the following websites.

www.marad.dot.gov/statistics

www.census.gov/foreign-trade/schedules/b/

www.usitc.gov/taffairs.htm

Table 2: 1999 Import Value For Each West Coast Port

Port	Import Value	Pct of Total
Long Beach, CA	\$ 73,577,208,490	34.5%
Los Angeles, CA	68,075,039,268	32.0
Seattle, WA	26,707,492,573	12.5
Oakland, CA	15,587,011,553	7.3
Tacoma, WA	13,145,371,487	6.2
Portland, OR	6,590,909,004	3.1
Port Hueneme, CA	3,745,563,600	1.8
San Diego, CA	3,307,676,183	1.6
Vancouver, WA	908,029,515	0.4
San Francisco, CA	440,770,050	0.2
San Joaquin River, CA	204,596,271	0.1
Longview, WA	174,728,773	0.1
Crockett, CA	145,590,611	0.1
Richmond, CA	106,927,456	0.1
Kalama, WA	67,853,490	<0.1
Anacortes, WA	43,300,825	<0.1
Bellingham, WA	41,450,274	<0.1
Stockton, CA	37,614,913	<0.1
Friday Harbor, WA	22,271,078	<0.1
Everett, WA	21,523,089	<0.1
Port Angeles, WA	19,650,008	<0.1
Eureka, CA	13,778,403	<0.1
Redwood City, CA	9,817,133	<0.1
Sacramento, CA	9,500,200	<0.1
Aberdeen-Hoquiam, WA	9,428,043	<0.1
Coos Bay, OR	5,617,042	<0.1
Port Townsend, WA	3,339,920	<0.1
Olympia, WA	3,188,437	<0.1
Astoria, OR	1,693,917	<0.1
Alameda, CA	38,678	<0.1
Grand Total	\$213,026,980,284	100.0%

Table 3: West Coast 1999 Import Value By Country of Origin

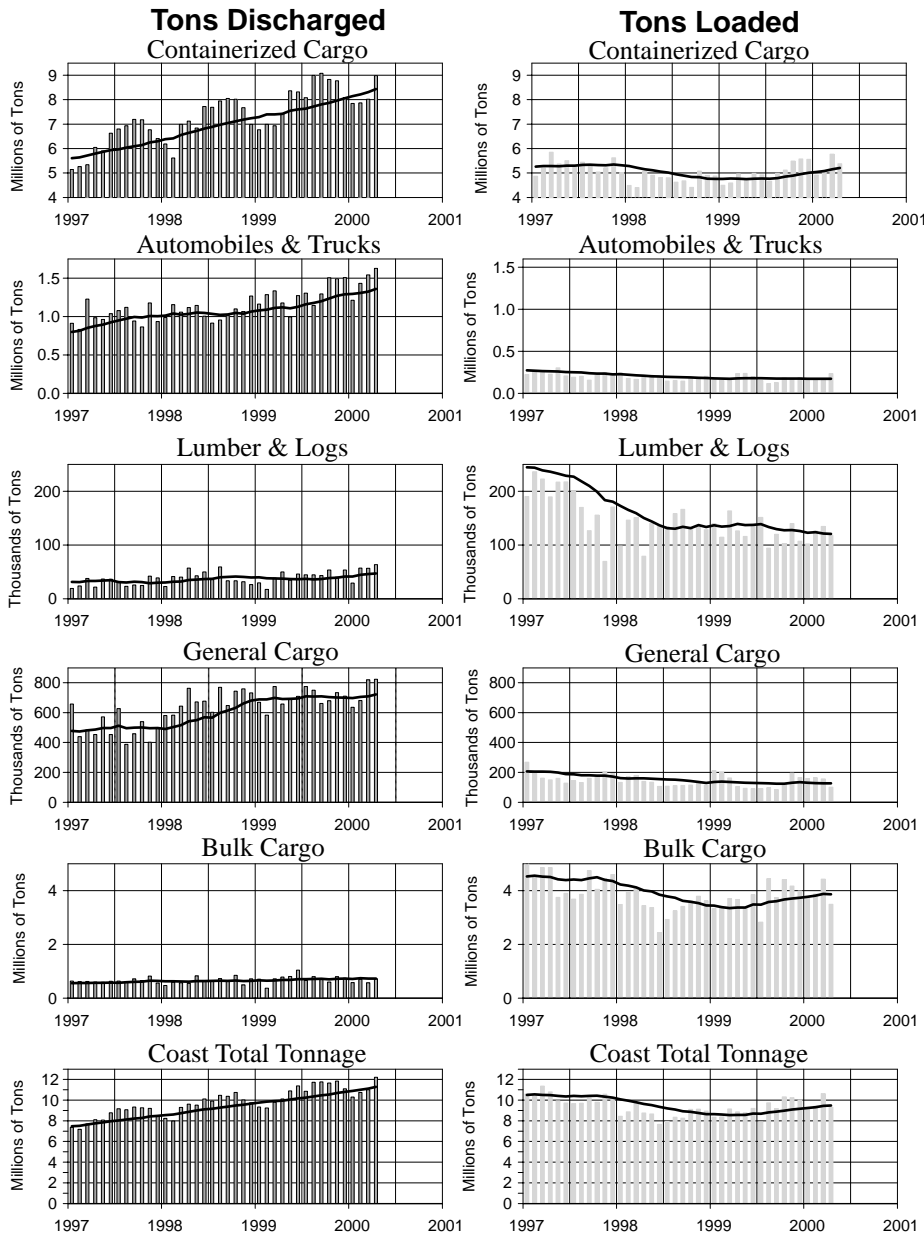
Country of Origin	Import Value	Pct of Total
Japan	\$ 69,440,947,054	32.6%
China (Mainland)	59,939,219,647	28.1
China (Taiwan)	16,733,991,788	7.9
South Korea	12,752,776,713	6.0
Thailand	7,644,956,305	3.6
Malaysia	6,330,930,529	3.0
Indonesia	5,390,626,545	2.5
Hong Kong	5,271,992,387	2.5
Germany	3,824,468,609	1.8
Philippines	3,810,415,128	1.8
Singapore	2,461,426,942	1.2
Australia	2,169,357,509	1.0
India	1,739,696,706	0.8
United Kingdom	1,202,421,962	0.6
Italy	1,189,905,688	0.6
Bangladesh	1,187,862,456	0.6
New Zealand	851,853,790	0.4
Macau	824,444,096	0.4
France	811,569,123	0.4
Sri Lanka	703,371,812	0.3
Pakistan	670,720,727	0.3
Mexico	627,014,828	0.3
Canada	613,413,690	0.3
Belgium	480,155,988	0.2
Cambodia	428,127,645	0.2
165 Other Countries	5,925,312,617	2.8%
Total Import Value	\$213,026,980,284	100.0%

Table 4: Value of Imports By Country of Origin and By U.S. Coast of Entry

Country of Origin	Atlantic Coast	Pct of Region	Gulf Coast	Pct of Region	West Coast	Pct of Region	Grand Total	Pct of Total
Japan	\$ 13,969,416,151	10.4%	\$ 4,533,752,591	14.2%	\$ 69,440,947,054	32.6%	\$ 87,944,115,796	23.0%
China (Mainland)	8,376,182,020	6.2	519,186,766	1.6	59,939,219,647	28.1	68,834,588,433	18.0
Germany	20,676,732,830	15.4	4,760,715,391	14.9	3,824,468,609	1.8	29,261,916,830	7.7
China (Taiwan)	2,099,711,589	1.6	62,097,948	0.2	16,733,991,788	7.9	18,895,801,325	5.0
South Korea	2,563,998,463	1.9	878,042,293	2.7	12,752,776,713	6.0	16,194,817,469	4.2
United Kingdom	9,649,934,643	7.2	1,459,065,101	4.6	1,202,421,962	0.6	12,311,421,706	3.2
Italy	8,022,046,080	6.0	1,118,042,789	3.5	1,189,905,688	0.6	10,329,994,557	2.7
Thailand	1,771,206,517	1.3	194,868,911	0.6	7,644,956,305	3.6	9,611,031,733	2.5
France	6,170,875,106	4.6	1,138,439,384	3.6	811,569,123	0.4	8,120,883,613	2.1
Malaysia	1,143,234,967	0.8	137,327,007	0.4	6,330,930,529	3.0	7,611,492,503	2.0
Indonesia	1,739,125,662	1.3	399,002,372	1.2	5,390,626,545	2.5	7,528,754,579	2.0
Brazil	5,089,547,911	3.8	1,982,992,186	6.2	318,248,717	0.1	7,390,788,814	1.9
Hong Kong	524,147,482	0.4	3,472,452	0.0	5,271,992,387	2.5	5,799,612,321	1.5
Sweden	3,527,518,313	2.6	744,161,329	2.3	380,527,649	0.2	4,652,207,291	1.2
India	2,419,948,650	1.8	295,654,829	0.9	1,739,696,706	0.8	4,455,300,185	1.2
Philippines	553,825,674	0.4	21,266,176	0.1	3,810,415,128	1.8	4,385,506,978	1.1
Mexico	1,726,963,454	1.3	1,413,484,470	4.4	627,014,828	0.3	3,767,462,752	1.0
Belgium	2,388,557,104	1.8	814,095,937	2.5	480,155,988	0.2	3,682,809,029	1.0
Netherlands	2,551,036,304	1.9	600,922,762	1.9	419,233,980	0.2	3,571,193,046	0.9
Australia	828,647,842	0.6	260,866,584	0.8	2,169,357,509	1.0	3,258,871,935	0.9
Other Countries	38,821,805,636	28.8	10,604,478,701	33.2	12,548,523,429	5.9	61,974,807,766	16.2
Total	\$134,614,462,398	100.0%	\$31,941,935,979	100.0%	\$213,026,980,284	100.0%	\$379,583,378,661	99.4%
U.S. Great Lakes							\$ 2,142,410,819	0.6%
Percent of U.S. Total	35.3%		8.4%		55.8%		\$381,725,789,480	100.0%

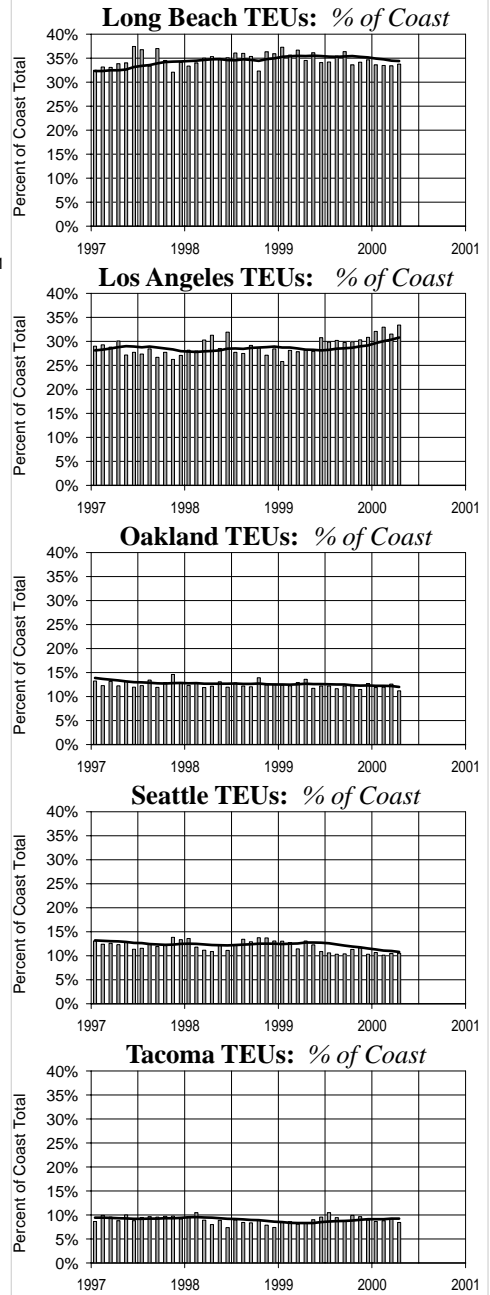
Monthly Tonnage by Reporting Category: Discharged vs. Loaded

Actual Tons Reported by Month



In the Tonnage graphs above, bars represent monthly totals, and the lines show 12-month moving averages.

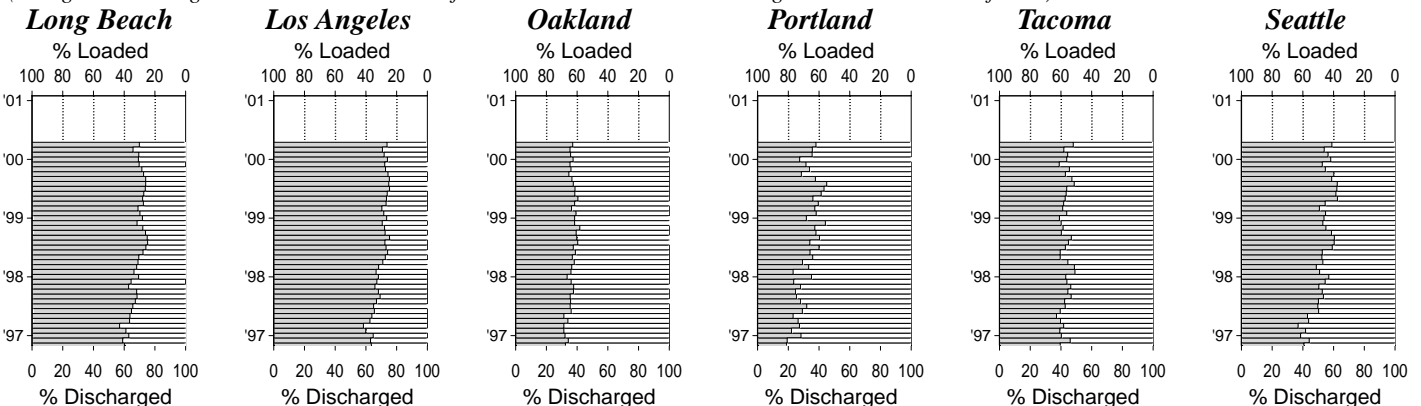
Major Container Ports: Percent of Coast Total TEUs



"Weighted" Tonnage: % Discharged vs. % Loaded

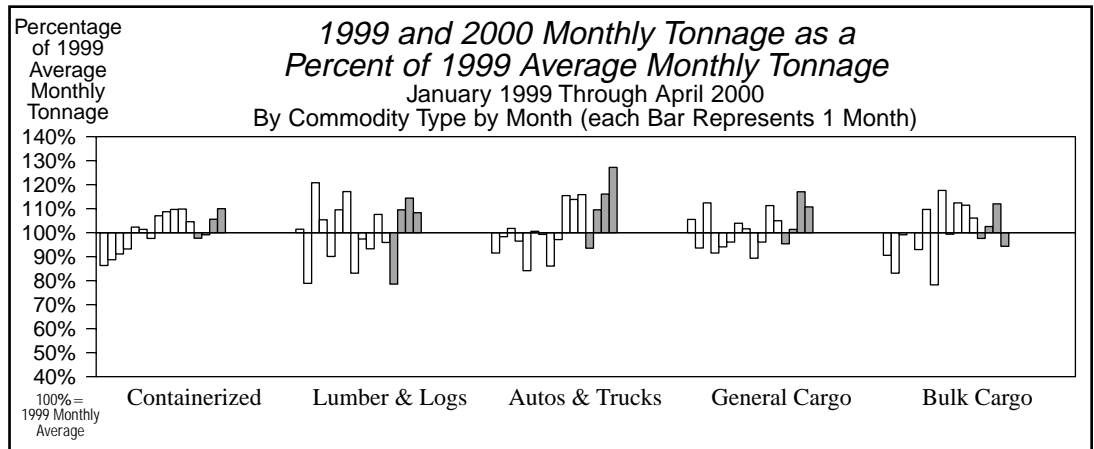
("Weighted" Tonnage = Containerized + 1/6 of Autos & Trucks + Lumber & Logs + General + 1/50 of Bulk)

% Discharged % Loaded



ILWU LOCAL/PORT AREA	REGISTRATION		STATS (For 52 Payroll Weeks)							PORT HOURS (Year-to-date)					TONNAGE BY PORT AREA (Year-to-date)									
	(At 5/26/00)		(Ending 5/26/00)		Hours Paid:					Hours Paid at					% of Port Total (Year-to-Date)					% of 2000 YTD				
	Class	Number	Annual	Wkly	Out of	Other	Cas-	Inac-	P/R	Wks	1-22, '00	Occ	Exp.	Cont'r	Other	Lmbr	Autos	Bulk	2000 YTD	Coast	'00 as a	Cstwise		
TOTAL	"B"	Working	Hrs Pd	PGP	Port	Local	uals	tives	Avg. Wkly	% Cst	Clk	Frm	Rates*	RU's	Gen'l	Logs	Trucks	Cargo	TOTAL	2000 YTD	% of '99	Loaded		
NO.	NO.	NO.	HRS	\$	%	%	%	%	HRS	%	%	%	%	%	%	%	%	%	%	TONS	%	%	TONS	
Longshoremen																								
<i>Southern California</i>																								
29 San Diego	55	14	55	2,415	< 1	5.4	5.3	40.0	0.5	4,021	0.9	9.2	12.6	28.9	-	2.7	1.9	58.9	36.5	100.0	1,528,072	1.8	111.5	0
13 Los Angeles/Long Beach	4,157	807	4,111	2,114	< 1	0.2	2.2	9.2	0.6	278,535	61.7	24.6	9.5	18.5	80.1	4.3	0.1	5.0	10.5	100.0	44,369,558	53.6	120.4	42,544
46 Port Hueneme	78	2	76	2,148	< 1	6.7	5.9	46.2	0.1	7,660	1.7	16.0	6.4	27.5	8.6	20.4	-	68.6	2.3	100.0	1,175,932	1.4	130.9	0
Southern California Total	4,290	823	4,242	2,118	< 1	0.4	2.4	10.7	0.6	290,217	64.3	24.1	9.5	18.8	75.8	4.6	0.2	8.3	11.1	100.0	47,073,562	56.9	120.4	42,544
<i>Northern California</i>																								
10 San Francisco Bay Area	1,046	195	981	1,792	< 1	0.9	1.6	3.4	1.9	51,687	11.4	26.5	8.4	18.5	87.6	3.3	< 0.1	3.8	5.3	100.0	7,489,761	9.1	106.8	0
54 Stockton	51	19	51	1,596	44	11.2	5.0	14.9	2.4	2,403	0.5	19.8	7.6	9.8	-	11.2	-	-	88.8	100.0	438,968	0.5	79.4	0
18 Sacramento	22	1	22	1,690	117	11.3	20.7	19.2	1.3	2,070	0.5	22.7	6.4	13.2	-	42.9	0.3	-	56.8	100.0	369,907	0.4	102.9	0
14 Eureka	27	0	26	1,390	201	31.3	8.7	14.4	3.8	719	0.2	11.2	9.8	14.1	-	31.6	19.2	-	49.2	100.0	225,503	0.3	140.6	0
Northern California Total	1,146	215	1,080	1,771	9	2.2	2.4	4.5	1.9	56,880	12.6	25.9	8.3	17.9	77.0	6.1	0.5	3.4	13.0	100.0	8,524,139	10.3	105.5	0
<i>Oregon</i>																								
12 North Bend/Coos Bay	84	5	78	1,079	293	49.8	2.4	0.2	3.2	1,112	0.2	9.5	8.2	0.1	< 0.1	0.6	8.9	-	90.5	100.0	695,010	0.8	82.4	24,879
53 Newport	10	3	10	609	400	81.6	10.9	0.0	1.1	23	0.0	0.0	0.0	0.0	-	-	100.0	-	-	100.0	1,530	0.0	34.2	0
50 Astoria	37	0	36	656	552	83.6	5.0	0.1	4.2	74	0.0	0.0	0.0	0.0	-	-	100.0	-	-	100.0	3,732	0.0	76.1	0
8 Portland	460	60	450	1,786	13	3.7	8.7	2.7	2.6	20,879	4.6	15.3	7.6	8.9	20.4	3.1	0.1	19.4	57.0	100.0	6,249,502	7.6	102.2	25,349
4 Vancouver, WA	147	42	145	1,790	10	11.1	13.3	5.0	1.7	6,807	1.5	14.0	6.4	9.0	0.3	8.9	0.5	12.3	78.0	100.0	1,507,848	1.8	87.6	0
21 Longview, WA	193	33	192	1,961	7	9.8	8.7	3.6	1.8	9,166	2.0	9.2	8.0	9.5	< 0.1	9.7	6.5	-	83.8	100.0	3,329,834	4.0	113.3	13,338
Oregon Total	931	143	911	1,706	61	10.4	9.3	3.2	2.3	38,062	8.4	13.4	7.5	8.8	10.9	5.6	2.5	11.8	69.2	100.0	11,787,454	14.3	101.4	63,566
<i>Washington</i>																								
24 Aberdeen	66	1	66	1,365	181	23.5	13.3	5.1	0.6	1,593	0.4	6.6	5.7	1.4	4.7	10.1	85.1	-	-	100.0	112,418	0.1	81.8	57,059
27 Port Angeles	51	0	51	741	559	71.4	4.7	1.2	1.7	279	0.1	7.1	7.1	0.3	-	-	20.3	-	79.7	100.0	73,262	0.1	78.2	23,946
51 Port Gamble	10	0	10	517	675	84.0	0.0	0.0	2.0	16	0.0	0.0	0.0	0.0	-	-	-	-	-	-	0	0.0	-	0
47 Olympia	28	5	28	663	422	50.0	12.1	3.6	0.4	223	0.0	3.4	19.9	3.9	-	-	25.1	-	74.9	100.0	18,389	0.0	147.6	0
23 Tacoma	522	132	519	2,028	-	0.1	6.3	13.0	0.5	32,453	7.2	21.4	8.0	14.1	56.3	0.7	1.5	8.0	33.5	100.0	8,389,157	10.1	127.7	0
19 Seattle	571	127	565	1,805	1	3.1	3.9	7.5	0.9	30,209	6.7	25.5	8.1	5.3	88.6	1.4	< 0.1	3.9	6.1	100.0	6,339,939	7.7	89.3	16,773
32 Everett	47	0	45	1,072	233	19.9	8.2	7.3	2.9	803	0.2	6.3	7.7	2.8	-	-	12.2	-	87.8	100.0	127,421	0.2	82.4	5,284
25 Anacortes	13	0	13	1,141	220	33.5	20.8	1.9	1.3	221	0.0	10.5	14.1	0.4	-	-	6.2	-	93.8	100.0	67,500	0.1	118.2	0
7 Bellingham	28	0	28	989	282	15.9	13.6	7.6	5.6	475	0.1	10.5	10.9	4.7	-	10.4	-	-	89.6	100.0	190,416	0.2	64.8	0
Washington Total	1,336	265	1,325	1,747	61	4.9	5.7	10.0	0.8	66,272	14.7	22.5	8.1	9.4	67.5	1.2	1.7	6.0	23.6	100.0	15,318,501	18.5	106.3	103,062
Total/Average	7,703	1,446	7,558	1,954	19	2.4	3.6	9.1	0.9	451,455	100.0	23.2	9.0	16.5	65.1	4.3	0.8	7.9	21.9	100.0	82,703,657	100.0	112.9	209,172
<i>% Change from Update of 6/99</i>	<i>+0.2</i>	<i>-11.2</i>	<i>+0.04</i>	<i>+4.8</i>	<i>-5.0</i>	<i>-0.4</i>	<i>+0.7</i>	<i>+1.1</i>	<i>+0.6</i>	<i>+13.5</i>	<i>+0.1</i>	<i>-0.1</i>	<i>+1.1</i>	<i>+1.1</i>	<i>14.8%</i>	<i>5.3%</i>	<i>1.1%</i>	<i>15.0%</i>	<i>9.1%</i>	<i>12.9%</i>			<i>10.7%</i>	

Clerks																							
29 San Diego	4	0	4	***	***	9.4	39.0	15.9	0.0														
46 Port Hueneme	12	0	12	2,684	-	2.1	33.8	10.0	0.8														
63 Los Angeles/Long Beach	988	2	975	2,692	< 1	0.2	9.8	17.2	1.1														
14 Eureka	2	0	2	***	***	21.0	47.0	0.4	13.0														
34 SF Bay Area & Delta	271	9	266	2,436	1	2.7	11.3	2.2	1.7														
40 Portland	100	0	98	2,326	14	34.6	13.1	1.5	1.9														
23 Tacoma	78	0	78	2,716	-	0.0	38.4	2.7	2.3														
52 Seattle	155	0	150	2,617	-	14.8	13.5	2.7	1.7														
Total/Average	1,610	11	1,585	2,618	1	3.9	12.7	12.2	1.3														
Foremen/Walking Bosses																							
29 San Diego	2	0	2	***	***	0.7	74.7	3.2	0.1														
46 Port Hueneme	7	-	7	2,570	2	2.5	27.3	0.5	0.0														
94 Los Angeles/Long Beach	368	-	367	3,558	< 1	0.3	6.6	0.0	1.9														
91 Northern Calif. Area	71	-	70	2,776	26	0.6	17.3	0.0	3.8														
92 Portland	47	-	47	2,425	11	7.3	16.5	0.0	10.7														
98 Seattle	93	-	88	2,802	13	9.8	14.9	0.0	2.1														
Total/Average	588		581	3,245	6	2.0	10.9	0.0	2.8														



* Longshore and Clerk hours only. *** "Annual Hrs Pd" and "Wkly PGP" for groups of less than five individuals are not shown, but the data are included in category averages.