



West Coast Exports \$53.7 Billion: 25% of 1999 Imports

The value of dry cargo exported from West Coast ports in 1999 was just one quarter of the value of the cargo that was imported. These numbers are consistent with recent *Update* articles about the imbalance in loaded and discharged containers and articles about the large numbers of containers being returned empty to West Coast ports for shipment offshore.

West Coast exports represented 32.4% of the \$156.3 billion in goods exported from the 48 contiguous states last year. The data used in this report are derived from 1999 annual export data files obtained from the Maritime Administration Office of Statistical and Economic Analysis.

Classification System

U.S. trade data is classified based upon the international Harmonized System (HS), the global classification system that is used to describe world trade in goods. (The term "goods" is used herein interchangeably with commodities and cargo.)

The HS system defines the level of detail with which commodities or goods are categorized. For the purposes of this study, goods are identified to two digits (HS2). The classification system identifies goods to the 6-digit level. The U.S. further defines goods using an additional 4 digits, generating a 10-digit identification code.

West Coast Exports by Commodity

The export commodity mix differs significantly from the import mix. In the import category (see Vol. 12, No. 6, June 2000) the top 20 commodity classifications include mostly manufactured consumer products.

In the export category, one-half of the top twenty commodities are farm, agricultural, and forest products. These commodities, in order of export value by HS2 code, are 02, 10, 24, 08, 44, 48, 41, 20, 12, and 21 as shown in Table 1.

The largest export commodity group in terms of value, however, was HS2 84, which includes machinery, appliances, computers, and related commodities. This group represented 12.8% of the total. Group 84 contains the most extensive list of products in the 99 major HS2 commodity groupings.

West Coast Export Value by Port

Los Angeles edged out Long Beach in terms of the highest dollar amount of dry car-

go exports with each port exporting nearly \$14 billion worth of goods (See Table 2.). Oakland took third place with over \$10 billion. These three ports accounted for 70.9% of the total West Coast export value in 1999. Seattle, Tacoma, and Portland added another \$12 billion; the remaining \$3.6 billion moved out of the other ports.

Where West Coast Exports Go

Japan, at \$19.5 billion, is the largest consumer of West Coast exports. Mainland China combined with Hong Kong comes in second with \$7.1 billion, and South Korea falls in third place with \$5.8 billion. As shown in Table 3, the top five nations (combining Mainland China and Hong Kong) consume 75% of

Table 1: West Coast 1999 Waterborne Cargo Exports, Value by Commodity Classification

HS2 Code	Description/Examples	Value	Pct of Total	Not in Cont's
84	Machinery, appliances, computers, engines	\$6,846,790,853	12.8%	9.0%
39	Plastics and articles thereof	3,388,067,580	6.3	3.5
02	Meat	3,244,251,607	6.0	1.2
87	Vehicles	3,127,723,423	5.8	33.5
85	Electric equip., sound equip. etc.	3,101,207,290	5.8	7.0
10	Grain	2,381,708,053	4.4	96.6
29	Organic chemicals	2,007,555,401	3.7	2.4
24	Tobacco	1,937,195,244	3.6	0.0
28	Inorganic Chemicals, rare earths, etc.	1,528,785,121	2.8	21.8
08	Fruit and nuts	1,519,897,020	2.8	5.8
44	Wood and articles of wood	1,502,661,262	2.8	53.2
48	Paper and paperboard	1,437,474,255	2.7	15.1
38	Miscellaneous chemical products	1,221,429,804	2.3	3.5
90	Optic, photo, medic or surgical instruments	1,147,523,313	2.1	9.2
41	Raw hides and skins	996,625,849	1.9	1.5
88	Aircraft, spacecraft, and parts thereof	907,547,892	1.7	27.2
20	Prepared vegetables, fruits, nuts, etc.	901,117,092	1.7	2.6
12	Oil seeds, misc. grain seeds, fruits	797,936,594	1.5	31.5
21	Miscellaneous edible preparations	697,815,136	1.3	2.8
76	Aluminum	688,621,337	1.3	14.4
22	Beverages, spirits, vinegar	647,744,894	1.2	1.8
47	Wood pulp, recovered waste, scrap	639,777,745	1.2	30.1
95	Toys, games and sports equipment	625,552,698	1.2	3.5
33	Essential oils, perfumery, cosmetic	573,322,115	1.1	3.4
23	Food industry residues & waste, animal feed	549,862,714	1.0	14.8
37	Photographic or cinematographic goods	537,618,498	1.0	2.8
52	Cotton	534,120,928	1.0	5.4
32	Tanning and dye, paint, putty	516,556,556	1.0	2.3
03	Fish, crustaceans, aquatic invertebrates	498,982,864	0.9	7.0
94	Furniture, bedding, lamps	498,693,436	0.9	3.7
40	Rubber, tires, tubes, latex, etc.	483,272,108	0.9	4.2
	All other categories	8,164,713,013	15.2	
West Coast Total Export Value		\$ 53,652,151,695	100.0%	

CONSUMER PRICE INDEX U.S. CITY AVERAGE - ALL ITEMS (1982-84 = 100)

Month	1998	1999	2000	12 Mo.
Urban Wage Earners & Clerical Workers				
Jan	158.4	161.0	165.5	2.80
Feb	158.5	161.1	166.4	3.29
Mar	158.7	161.4	167.8	3.97
Apr	159.1	162.7	167.9	3.20
May	159.5	162.8	168.1	3.26
Jun	159.7	162.8	169.1	3.87
Jul	159.8	163.3		2.19
Aug	160.0	163.8		2.38
Sep	160.2	164.7		2.81
Oct	160.6	165.0		2.74
Nov	160.7	165.1		2.74
Dec	160.7	165.1		2.74

West Coast export value. The West Coast relies on a very narrow market for the vast majority of both imports and exports. This contrasts strongly to the Atlantic and Gulf Coasts that have a much broader market penetration for both exports and imports.

U.S. Exports by Coast

Table 4 shows U.S. exports from the three coastal regions by value for the country to which shipped. The amount of exports shipped to Japan from the U.S. represents over 15% of the U.S. total. Mainland China and Hong Kong combined consumed about 6.5% of U.S. exports, and South Korea fell into third place with 5% of the exports.

It is interesting to note that in addition to the West Coast, the Gulf Coast's largest export partner, in dollar value, is Japan. The Gulf ports, in addition to Japan, also show significant exports to Mexico, South America, and Europe. The Gulf Coast and Japan connection illustrates the importance of the Panama Canal in U.S. trade.

The Atlantic and Gulf Coasts account for two-thirds of all U.S. exports. Under 2% of U.S. exports move out of the Great Lakes.

Range of Export Trading Partners

Exports moving out of the West Coast are tightly tied to the economies of a small number of countries with large economies. The Atlantic and Gulf Coasts show a much much greater range of trading partners.

The top twenty countries in terms of the value of exports received from the U.S. account for 85.6% of the total West Coast exports, but only 59.7% of the Gulf exports and 64.7% of the Atlantic Coast exports.

Table 2: 1999 Export Value For Each West Coast Port

Port	Import Value	Pct of Total
Los Angeles, CA	\$13,988,670,336	26.1%
Long Beach, CA	13,939,528,125	26.0
Oakland, CA	10,064,123,527	18.8
Seattle, WA	5,482,562,984	10.2
Tacoma, WA	3,790,056,097	7.1
Portland, OR	2,657,434,914	5.0
Longview, WA	675,849,820	1.3
Vancouver, WA	588,076,367	1.1
Kalama, WA	558,856,347	1.0
San Diego, CA	340,384,436	0.6
Carquinez Strait, CA	354,435,947	0.7
San Francisco, CA	207,258,392	0.4
Port Hueneme, CA	156,118,931	0.3
Sacramento, CA	134,055,220	0.2
Aberdeen-Hoquiam, WA	125,806,647	0.2
Coos Bay, OR	119,940,674	0.2
Bellingham, WA	106,883,960	0.2
Eureka, CA	100,231,636	0.2
Richmond, CA	63,945,688	0.1
Port Angeles, WA	55,938,482	0.1
Everett, WA	49,620,495	0.1
Olympia, WA	17,722,140	<0.1
Port Townsend, WA	16,825,019	<0.1
Astoria, OR	16,734,726	<0.1
Redwood City, CA	14,240,196	<0.1
Crockett, CA	9,927,549	<0.1
Stockton, CA	8,186,353	<0.1
Anacortes, WA	8,147,307	<0.1
Monterey, CA	356,037	<0.1
Friday Harbor, WA	205,443	<0.1
Newport, OR	27,900	<0.1
Total Export Value	\$53,652,151,695	100.0%

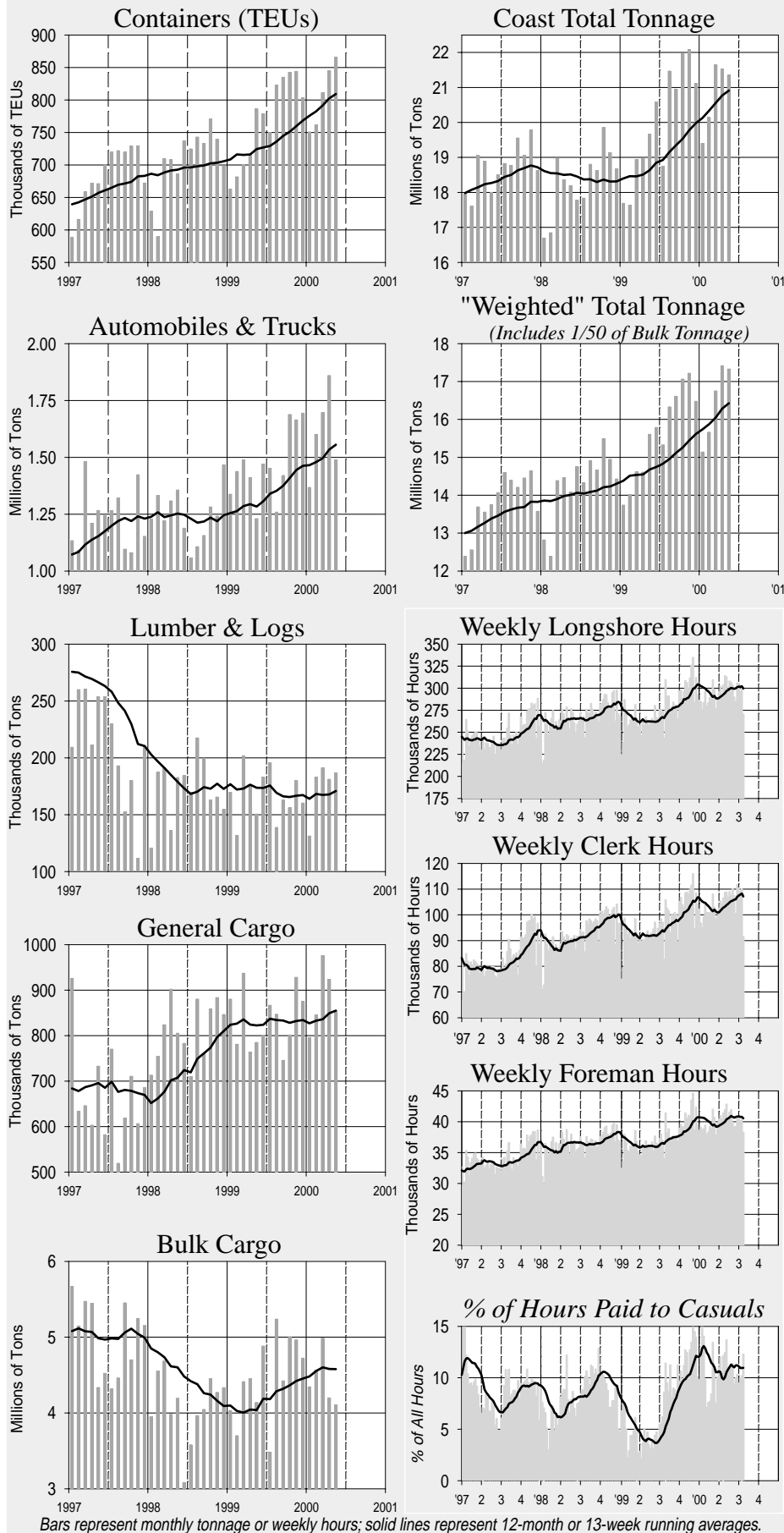
Table 3: West Coast 1999 Export Value By Country of Destination

Country of Destination	Import Value	Pct of Total
Japan	\$19,528,427,438	36.4%
South Korea	5,835,587,634	10.9
China (Taiwan)	4,156,244,361	7.7
China (Mainland)	3,615,186,222	6.7
Australia	3,607,909,113	6.7
Hong Kong	3,528,820,143	6.6
Singapore	2,373,177,772	4.4
Philippines	1,228,967,154	2.3
Thailand	1,099,050,291	2.0
Malaysia	872,450,204	1.6
Indonesia	781,758,725	1.5
United Kingdom	732,923,976	1.4
Netherlands	515,433,231	1.0
New Zealand	510,081,382	1.0
Germany	452,264,881	0.8
India	364,065,781	0.7
Belgium	279,944,994	0.5
France	264,919,937	0.5
Chile	238,197,036	0.4
Italy	232,848,746	0.4
Portugal	230,486,376	0.4
Spain	198,758,875	0.4
Saudi Arabia	162,786,620	0.3
United Arab Emirates	145,181,893	0.3
Brazil	136,281,289	0.3
183 Other Countries	2,560,397,621	4.8
Total Export Value	\$53,652,151,695	100.0%

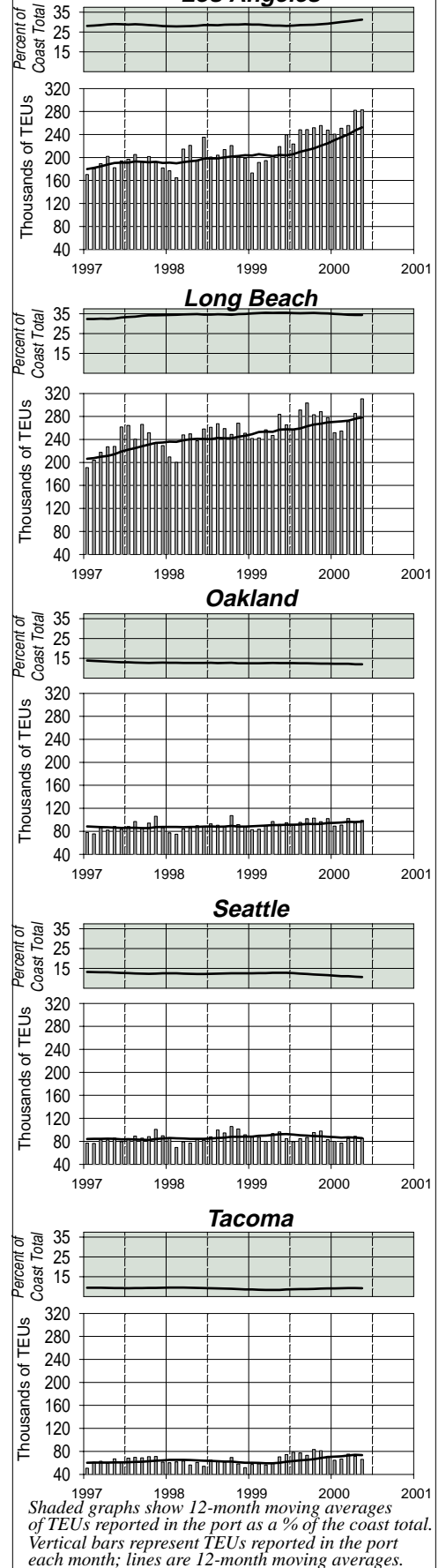
Table 4: Value of Exports By Country of Destination and By U.S. Coast of Departure

Country of Destination	Atlantic Coast	Pct of Region	Gulf Coast	Pct of Region	West Coast	Pct of Region	Grand Total	Pct of Total
Japan	\$2,699,532,226	3.6%	\$2,609,476,374	7.6%	\$19,528,427,438	36.4%	\$24,837,436,038	15.0%
South Korea	1,523,286,027	2.0	829,368,799	2.4	5,835,587,634	10.9	8,188,242,460	5.0
United Kingdom	5,922,437,656	7.9	1,274,811,783	3.7	732,923,976	1.4	7,930,173,415	4.8
Germany	5,044,234,905	6.8	959,978,875	2.8	452,264,881	0.8	6,456,478,661	3.9
Belgium	4,674,833,143	6.3	1,478,371,201	4.3	279,944,994	0.5	6,433,149,338	3.9
Netherlands	4,175,157,627	5.6	1,555,982,935	4.5	515,433,231	1.0	6,246,573,793	3.8
China (Taiwan)	1,227,653,185	1.6	816,910,486	2.4	4,156,244,361	7.7	6,200,808,032	3.8
China (Mainland)	1,417,364,796	1.9	1,143,653,762	3.3	3,615,186,222	6.7	6,176,204,780	3.7
Australia	1,500,589,632	2.0	418,761,535	1.2	3,607,909,113	6.7	5,527,260,280	3.3
Brazil	3,842,736,501	5.1	1,334,864,399	3.9	136,281,289	0.3	5,313,882,189	3.2
Hong Kong	977,703,203	1.3	45,824,685	0.1	3,528,820,143	6.6	4,552,348,031	2.8
Venezuela	1,888,751,511	2.5	1,652,317,314	4.8	99,448,299	0.2	3,640,517,124	2.2
France	2,699,949,609	3.6	661,725,448	1.9	264,919,937	0.5	3,626,594,994	2.2
Saudi Arabia	2,609,389,059	3.5	772,187,685	2.2	162,786,620	0.3	3,544,363,364	2.1
Singapore	578,555,114	0.8	222,362,194	0.6	2,373,177,772	4.4	3,174,095,080	1.9
Dominican Republic	2,288,607,272	3.1	417,985,269	1.2	43,651,976	0.1	2,750,244,517	1.7
Italy	1,941,020,927	2.6	552,062,286	1.6	232,848,746	0.4	2,725,931,959	1.6
Mexico	395,582,403	0.5	2,170,809,908	6.3	72,882,785	0.1	2,639,275,096	1.6
Spain	1,610,932,712	2.2	655,825,335	1.9	198,758,875	0.4	2,465,516,922	1.5
Egypt	1,313,325,511	1.8	1,014,984,744	2.9	99,359,564	0.2	2,427,669,819	1.5
All Other Countries	26,327,999,014	35.3	13,920,450,122	40.3	7,715,293,839	14.4	47,963,742,975	29.0
Total	\$74,659,642,033	100.0%	\$34,508,715,139	100.0%	\$53,652,151,695	100.0%	\$162,820,508,867	98.5%
U.S. Great Lakes							\$2,504,866,498	1.5%
Percent of U.S. Total	45.2%		20.9%		32.5%		\$165,325,375,365	100.0%

Monthly Tonnage by Reporting Category and Weekly Hours by Occupation Code Type

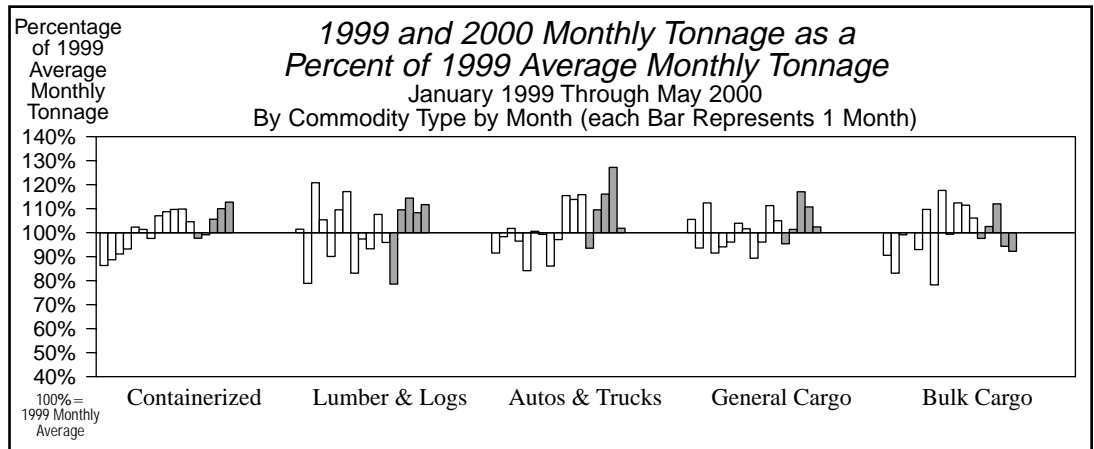


Major Container Ports: Monthly TEUs Reported & Percent of Coast Total TEUs



ILWU LOCAL/PORT AREA	REGISTRATION		STATS (For 52 Payroll Weeks)							PORT HOURS (Year-to-date)					TONNAGE BY PORT AREA (Year-to-date)									
	(At 6/30/00)		(Ending 6/30/00)		Hours Paid:					Hours Paid at					% of Port Total (Year-to-Date)					% of 2000 YTD				
	Class	Number	Annual	Wkly	Out of	Other	Cas-	Inac-	P/R Wks	1-27, '00	Occ Codes	Exp.	Cont'r	Other	Lmbr	Autos	Bulk	2000 YTD	Coast	'00 as a	Cstwise			
TOTAL	"B"	Working	Hrs Pd	PGP	Port	Local	uals	tives	Avg. Wkly	% Cst	Clk	Frm	Rates*	RU's	Gen'l	Logs	Trucks	Cargo	TOTAL	(Jan-May)	Total	% of '99	Loaded	
NO.	NO.	NO.	HRS	\$	%	%	%	%	HRS	%	%	%	%	%	%	%	%	%	%	TONS	%	%	TONS	
Longshorem																								
<i>Southern California</i>																								
29 San Diego	59	18	59	2,332	< 1	5.5	5.5	36.5	0.7	3,908	0.9	9.3	12.6	27.5	-	2.5	1.9	59.0	36.5	100.0	1,931,357	1.9	115.4	0
13 Los Angeles/Long Beach	4,331	994	4,280	2,074	< 1	0.2	2.5	8.7	0.5	279,806	61.8	24.7	9.5	18.6	80.9	4.2	0.1	4.8	9.9	100.0	56,401,185	54.2	119.3	56,542
46 Port Hueneme	78	2	76	2,130	< 1	6.8	5.7	47.1	0.1	7,384	1.6	16.3	6.4	26.7	8.2	20.8	-	69.1	1.9	100.0	1,446,628	1.4	133.9	0
Southern California Total	4,468	1,014	4,415	2,079	< 1	0.4	2.6	10.3	0.5	291,099	64.2	24.3	9.4	19.0	76.6	4.6	0.2	8.1	10.6	100.0	59,779,170	57.4	119.5	56,542
<i>Northern California</i>																								
10 San Francisco Bay Area	1,067	196	1,006	1,785	< 1	0.9	1.4	2.9	1.4	52,066	11.5	26.4	8.5	18.8	87.7	3.1	< 0.1	3.8	5.5	100.0	9,446,370	9.1	105.8	0
54 Stockton	51	19	51	1,585	44	10.8	5.5	16.2	1.8	2,444	0.5	19.3	7.5	10.2	-	9.9	-	-	90.1	100.0	603,003	0.6	85.8	0
18 Sacramento	22	1	22	1,721	106	10.7	20.5	19.1	1.1	1,852	0.4	23.0	6.7	12.3	-	36.1	0.2	-	63.6	100.0	439,029	0.4	95.3	0
14 Eureka	27	0	26	1,367	207	32.6	8.9	15.0	2.8	685	0.2	11.3	10.0	13.8	-	32.7	25.4	-	41.9	100.0	264,765	0.3	122.5	0
Northern California Total	1,167	216	1,105	1,765	9	2.1	2.2	4.1	1.4	57,047	12.6	25.8	8.4	18.1	77.0	5.5	0.7	3.3	13.5	100.0	10,753,167	10.3	104.3	0
<i>Oregon</i>																								
12 North Bend/Coos Bay	81	5	77	1,097	286	49.9	3.2	0.2	2.4	1,092	0.2	9.7	8.4	0.2	< 0.1	0.6	8.4	-	91.0	100.0	887,218	0.9	80.9	27,930
53 Newport	10	3	10	634	406	84.4	12.3	0.0	1.2	20	0.0	0.0	0.0	0.0	-	-	100.0	-	-	100.0	1,530	0.0	24.1	0
50 Astoria	37	0	36	656	554	83.3	3.8	0.1	4.2	74	0.0	0.0	0.0	0.0	-	-	100.0	-	-	100.0	5,364	0.0	61.1	0
8 Portland	459	59	448	1,808	13	3.8	8.7	2.7	2.2	21,101	4.7	15.5	7.7	8.9	20.6	3.6	0.1	18.8	56.9	100.0	7,716,206	7.4	98.5	29,048
4 Vancouver, WA	145	42	143	1,804	9	11.4	13.4	5.1	2.5	6,648	1.5	14.0	6.5	9.0	0.3	7.7	0.5	11.8	79.7	100.0	1,988,531	1.9	90.9	0
21 Longview, WA	193	33	192	1,971	6	10.6	8.5	3.8	1.3	8,790	1.9	9.4	8.0	9.1	< 0.1	9.6	6.7	-	83.6	100.0	4,139,923	4.0	128.8	18,281
Oregon Total	925	142	906	1,722	60	10.7	9.3	3.3	2.0	37,726	8.3	13.6	7.6	8.7	10.8	5.7	2.6	11.4	69.5	100.0	14,738,772	14.2	102.7	75,258
<i>Washington</i>																								
24 Aberdeen	66	2	66	1,324	183	24.2	14.5	5.2	0.5	1,534	0.3	6.6	5.6	1.5	4.1	11.1	84.8	-	-	100.0	130,643	0.1	84.0	69,299
27 Port Angeles	49	0	49	728	565	74.7	2.9	1.7	15.2	279	0.1	7.1	7.5	0.7	-	-	21.0	-	79.0	100.0	73,974	0.1	62.5	26,502
51 Port Gamble	10	0	10	522	678	84.3	0.0	0.0	2.0	16	0.0	0.0	0.0	0.0	-	-	-	-	-	-	0	0.0	-	0
47 Olympia	28	5	28	671	416	50.5	12.1	3.6	0.4	202	0.0	3.0	21.9	3.6	-	-	25.1	-	74.9	100.0	18,389	0.0	65.9	0
23 Tacoma	520	132	517	2,050	-	0.1	6.3	13.6	0.6	32,698	7.2	21.5	8.1	14.4	57.9	0.7	1.6	8.3	31.5	100.0	10,089,074	9.7	120.5	0
19 Seattle	563	118	556	1,822	1	3.1	4.7	8.0	0.7	30,824	6.8	25.1	8.1	5.9	88.3	1.4	< 0.1	3.7	6.6	100.0	8,012,943	7.7	89.1	23,813
32 Everett	45	0	43	1,106	224	20.0	10.1	7.6	3.1	901	0.2	6.0	7.5	2.8	-	-	16.4	-	83.6	100.0	133,836	0.1	70.2	8,334
25 Anacortes	13	0	13	1,134	222	32.6	18.2	1.6	1.0	256	0.1	10.9	15.4	0.4	-	-	5.1	-	94.9	100.0	81,596	0.1	127.9	0
7 Bellingham	28	0	28	966	289	18.8	14.2	7.6	4.2	509	0.1	10.1	10.8	4.3	-	11.8	-	-	88.2	100.0	247,793	0.2	82.7	0
Washington Total	1,322	257	1,310	1,763	61	4.9	6.1	10.5	0.8	67,218	14.8	22.4	8.1	9.8	68.8	1.2	1.7	6.0	22.3	100.0	18,788,249	18.1	103.1	127,948
Total/Average	7,882	1,629	7,736	1,939	19	2.4	3.8	8.9	0.8	453,110	100.0	23.3	9.0	16.6	65.9	4.2	0.8	7.7	21.3	100.0	104,059,358	100.0	112.0	259,749
% Change from Update of 7/99	+2.7	+1.4		+7.1	-9.5	-0.5	+1.0	+1.3	+0.4	+13.6	+0.1	-0.2	+0.9		13.7%	6.0%	5.2%	16.1%	7.1%	12.0%			6.7%	

Clerks												
29 San Diego	4	0	4	***	***	8.7	39.5	15.2	0.0			
46 Port Hueneme	12	0	12	2,689	-	2.3	34.4	10.2	0.6			
63 Los Angeles/Long Beach	981	3	968	2,702	< 1	0.1	11.8	16.3	1.1			
14 Eureka	2	0	2	***	***	21.0	46.9	0.4	9.8			
34 SF Bay Area & Delta	271	9	266	2,432	1	2.7	12.1	2.2	1.2			
40 Portland	101	0	99	2,323	17	34.2	13.4	1.5	1.5			
23 Tacoma	77	0	77	2,721	-	0.0	38.7	3.1	2.4			
52 Seattle	162	0	158	2,574	2	15.1	12.0	2.9	2.2			
Total/Average	1,610	12	1,586	2,619	2	3.9	14.1	11.6	1.3			
Foremen/Walking Bosses												
29 San Diego	2	0	2	***	***	0.7	74.5	3.1	0.2			
46 Port Hueneme	7	-	7	2,589	2	2.6	26.9	0.5	0.0			
94 Los Angeles/Long Beach	387	-	385	3,565	< 1	0.5	6.6	0.0	2.0			
91 Northern Calif. Area	72	-	71	2,790	25	0.5	17.0	0.0	3.0			
92 Portland	47	-	47	2,451	10	7.7	17.3	0.0	8.6			
98 Seattle	91	-	88	2,780	13	10.0	16.0	0.0	1.6			
Total/Average	606		600	3,258	6	2.1	11.0	0.0	2.5			



* Longshore and Clerk hours only. *** "Annual Hrs Pd" and "Wkly PGP" for groups of less than five individuals are not shown, but the data are included in category averages.