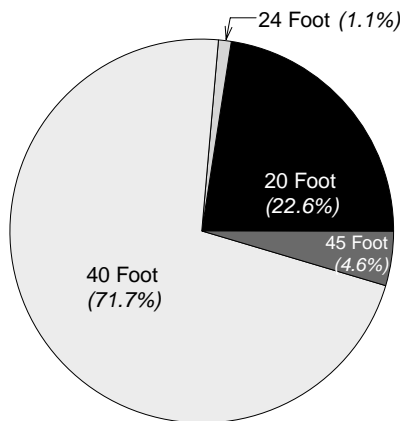


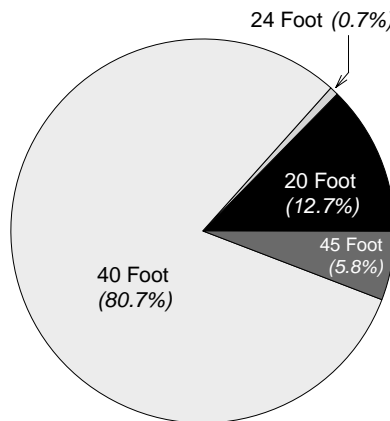
## Forty-foot Boxes Account for 72% of Containers Moved Through West Coast Ports

**Total Containers Reported on West Coast: January-June 2000**  
*Includes Assessable and Nonassessable Containers*

Length (Feet)	CONTAINER COUNTS				TEUs			
	Discharged	Loaded	Total		Discharged	Loaded	Total	
20	423,025	404,871	828,967	22.5%	423,025	404,871	827,896	12.7%
24	18,319	20,317	39,205	1.1	21,983	24,380	46,363	0.7
35	1	2	3	0.0	2	4	5	0.0
40	1,358,935	1,272,712	2,637,789	71.7	2,717,870	2,545,424	5,263,294	80.7
45	85,777	81,232	167,606	4.6	192,998	182,772	375,770	5.8
48	2,333	978	3,311	0.1	5,599	2,347	7,946	0.1
Total	1,888,390	1,780,112	3,676,881	100.0%	3,361,477	3,159,798	6,521,275	100.0%



Container Counts



TEUs

An integral part of the new tonnage reporting system, instituted by PMA in January, is the provision for containers to be reported by length. Prior to the implementation of this system, containers were converted to TEUs and then reported to PMA. The data and graphs in this issue are compiled from the container reports for the first six months of 2000.

Nearly 72% of the 3.7 million containers reported on the Coast in the first six months of 2000 are 40-foot boxes, and 22.6% are 20-foot boxes. Forty-five foot boxes are next most common (4.6%), and just over 1% are 24-foot containers. A small number of 48-foot units were reported (0.01%), and three 35-foot boxes were reported in Oakland. The “average” container is 35.6 feet long.

In terms of TEUs, 40-foot containers account for 80.7% of the 6.5 million TEUs. The forty-foot boxes comprise a larger proportion of TEUs since each 40-foot box contains 2 TEUs. Twenty-foot boxes (at 1 TEU per box) make up only 12.7% of the total TEUs. The “average” container of 35.6 feet is equivalent to 1.78 TEUs.

The pie charts to the left show graphically the distribution of containers and of TEUs by box length. The portion of total container count by box length is shown in the top left chart, and the equivalent portion of total TEUs contained in those containers is shown in the adjacent chart. These container counts include both assessable and non-assessable containers.

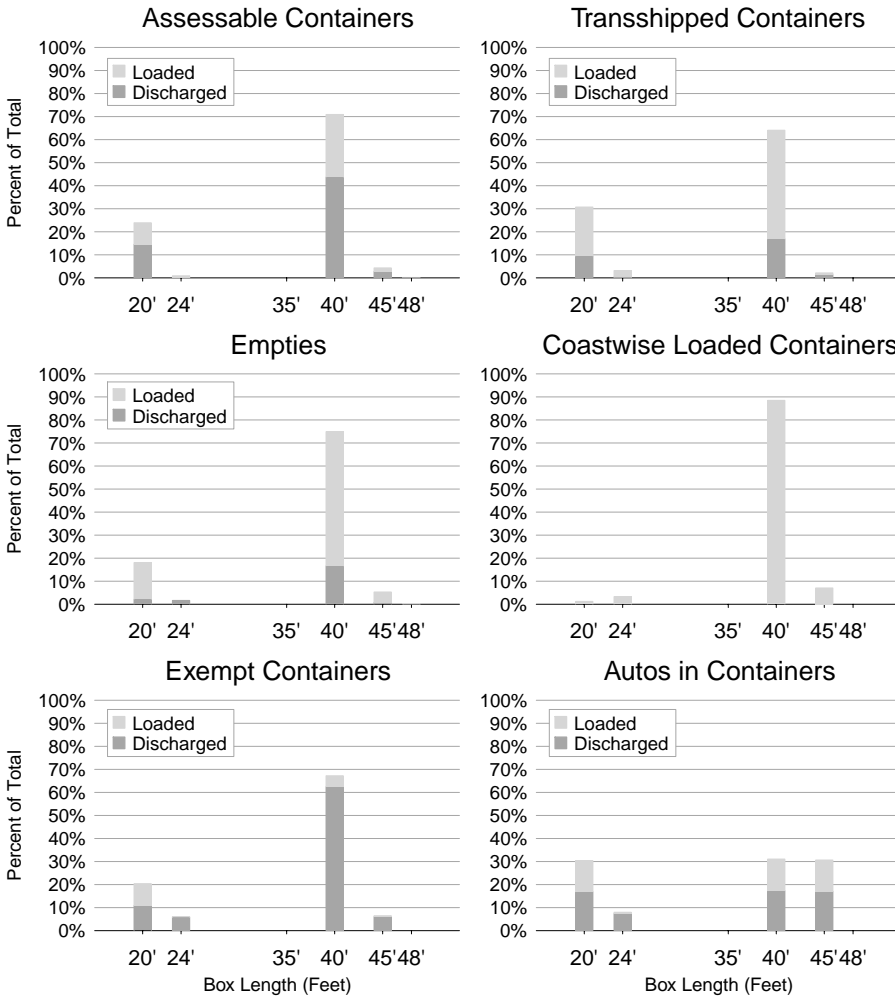
Twenty-foot, 40-foot, and 45-foot containers were reported in each of the six major container-handling ports. Forty-eight foot boxes were reported only in Los Angeles, Oakland, and Seattle, and 24-foot containers were reported in Long Beach, Oakland, and Seattle.

### Distributions by “Type” of Container

Both assessable and non-assessable containers are reported by length. In the non-assessable category are empties, exempt, transshipped, coastwise loaded, and auto-containing containers. The charts on page 2 show the distribution of each type of

**Total Containers Reported for 6 West Coast Ports: January-June 2000**

Discharged	Loaded	Total		Length (Feet)	Discharged	Loaded	Total	
<b>LONG BEACH</b>					<b>LOS ANGELES</b>			
139,757	125,825	265,582	22.2%	20	166,043	134,150	300,193	23.7%
				24	4,885	5,632	10,517	0.8
				35				
481,625	386,522	868,147	72.7	40	481,530	413,098	894,628	70.8
32,204	28,194	60,398	5.1	45	29,980	27,128	57,108	4.5
			0.0	48	1,209	503	1,712	0.1
653,586	540,541	1,194,127	100.0%	Total	683,647	580,511	1,264,158	100.0%
<b>OAKLAND</b>					<b>PORTLAND</b>			
40,853	59,127	99,980	22.1%	20	5,102	11,610	16,712	20.8%
6,161	6,579	12,740	2.8	24				
1	2	3	0.0	35				
135,022	189,153	324,175	71.7	40	15,518	46,895	62,413	77.9
5,313	10,230	15,543	3.4	45	123	906	1,029	1.3
				48				
187,350	265,091	452,441	100.0%	Total	20,743	59,411	80,154	100.0%
<b>SEATTLE</b>					<b>TACOMA</b>			
43,917	42,606	86,523	23.7%	20	23,641	27,395	51,036	16.9%
7,842	8,106	15,948	4.4	24				
				35				
137,510	107,598	245,108	67.2	40	106,930	125,550	232,480	77.1
10,735	4,637	15,372	4.2	45	7,995	10,125	18,120	6.0
1,124	475	1,599	0.4	48				
201,128	163,422	364,550	100.0%	Total	138,566	163,070	301,636	100.0%



container by length. Each bar shows the percentage of the containers reported in the particular category that were of the given length. The darker portion of each bar shows the percentage that were discharged; and the lighter gray area, those loaded.

In all categories except auto-containers, 40-foot boxes make up the largest group: 88% of the coastwise, 75% of the empties, 64% of the transshipped, and 67% of the exempt containers.

Among those containers carrying autos, twenty-foot, 40-foot, and 45-foot units each make up about 30% of the total. Twenty-

four foot containers make up the remaining eight percent.

The table below shows the numbers of containers reported by type by length of box. Assessable containers account for 2.77 million (75.3%) of the total. Empties totalled 861,727, or 23.4%. The remaining 1.3% is comprised of the other categories, combined.

Empty 20-foot containers make up only 18.8% of the total 20-foot units reported, but empties account for 26.5% of the 24-foot boxes handled. Forty-foot empties represent 24.4% of the 40-foot boxes reported.

**Containers Reported on U.S. West Coast by Type of Container by Box Length**  
January-June 2000

Length (Feet)	ASSESSABLE BOXES	NONASSESSABLE BOXES					TOTAL
		Empties	Exempt	Transshipped	Autos in Containers	Coastwise Loaded	
20	661,148	155,687	2,004	9,860	230	38	828,967
24	23,118	14,321	591	1,015	60	100	39,205
35	3	0	0	0	0	0	3
40	1,962,824	644,890	6,602	20,542	235	2,696	2,637,789
45	119,991	45,864	631	674	232	214	167,606
48	2,346	965	0	0	0	0	3,311
Total	2,769,430	861,727	9,828	32,091	757	3,048	3,676,881

**Rehandle and Overstow Lifts: Cell-to-Cell and Cell-Dock-Cell**

The PMA Tonnage Reporting System provides a means for reporting companies to enter the number of moves made from one cell to another on the same vessel. The information is used to improve the measures of terminal productivity that PMA calculates based on tonnage and payroll hour data.

These "rehandle" and "overstow" lifts are reported only as number of lifts, not by box length. A cell-to-cell move is counted as one lift, and a cell-dock-cell move is counted as two lifts.

The table below shows the number of lifts reported in the first half of 2000. A total of 45,442 rehandle and overstow lifts have been reported. Many more cell-to-cell moves have been reported relative to the number of cell-dock-cell moves in Oakland and Seattle than in the other ports.

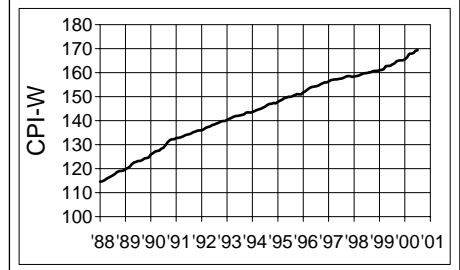
About 1 rehandle/overstow lift has been reported for every 81 containers.

**Rehandle & Overstow Lifts Reported U.S. West Coast — Jan-Jun 2000**

Port	Cell-to-Cell	Cell-Dock-Cell
Long Beach	680	11,722
Los Angeles	913	14,771
Oakland	1,950	9,490
San Francisco	113	1,137
Portland	175	714
Seattle	566	828
Tacoma	62	2,280
Anacortes	1	0
<b>TOTAL</b>	<b>4,460</b>	<b>40,942</b>

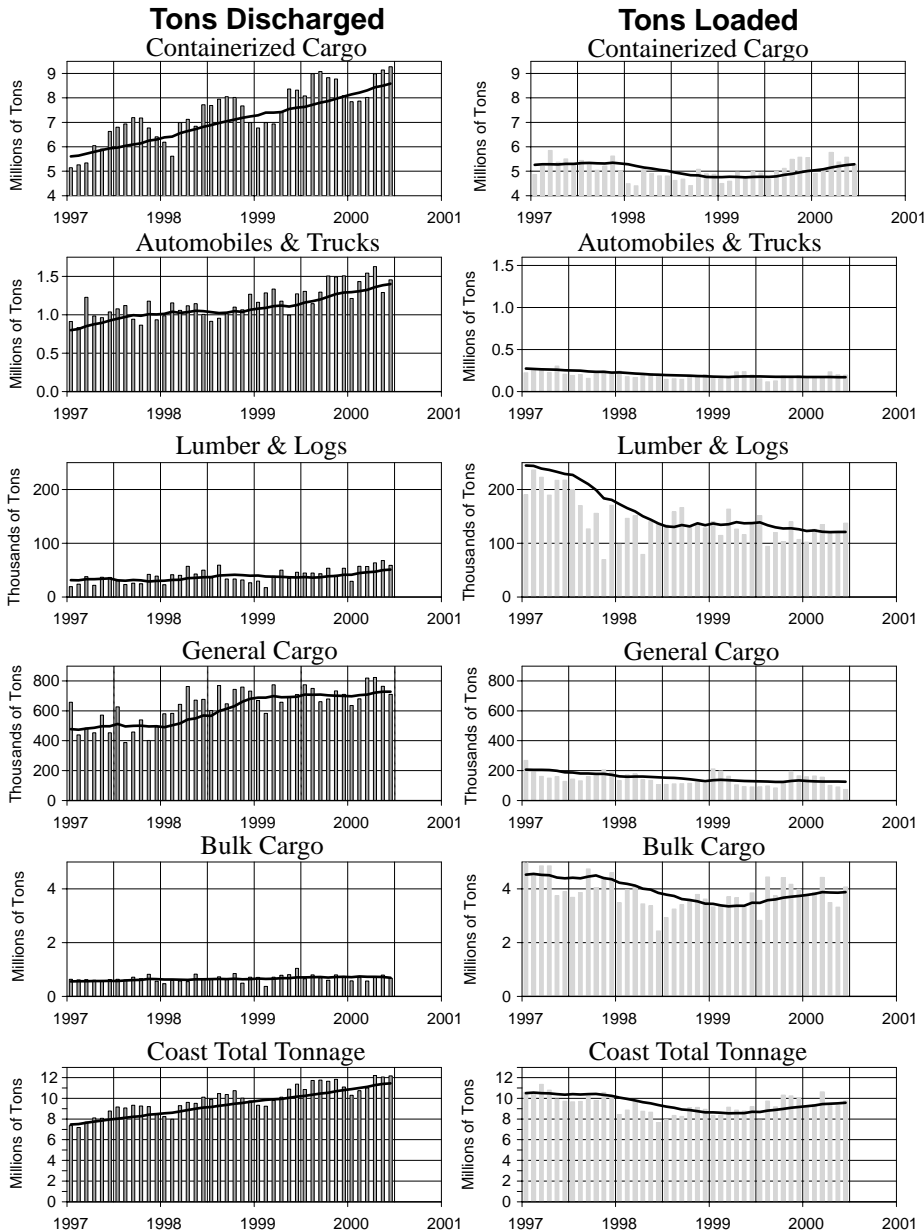
**CONSUMER PRICE INDEX U.S. CITY AVERAGE - ALL ITEMS (1982-84 = 100)**

Month	1998	1999	2000	12 Mo.
Jan	158.4	161.0	<b>165.5</b>	<b>2.80</b>
Feb	158.5	161.1	<b>166.4</b>	<b>3.29</b>
Mar	158.7	161.4	<b>167.8</b>	<b>3.97</b>
Apr	159.1	162.7	<b>167.9</b>	<b>3.20</b>
May	159.5	162.8	<b>168.1</b>	<b>3.26</b>
Jun	159.7	162.8	<b>169.1</b>	<b>3.87</b>
Jul	159.8	163.3	<b>169.3</b>	<b>3.67</b>
Aug	160.0	163.8		2.38
Sep	160.2	164.7		2.81
Oct	160.6	165.0		2.74
Nov	160.7	165.1		2.74
Dec	160.7	165.1		2.74



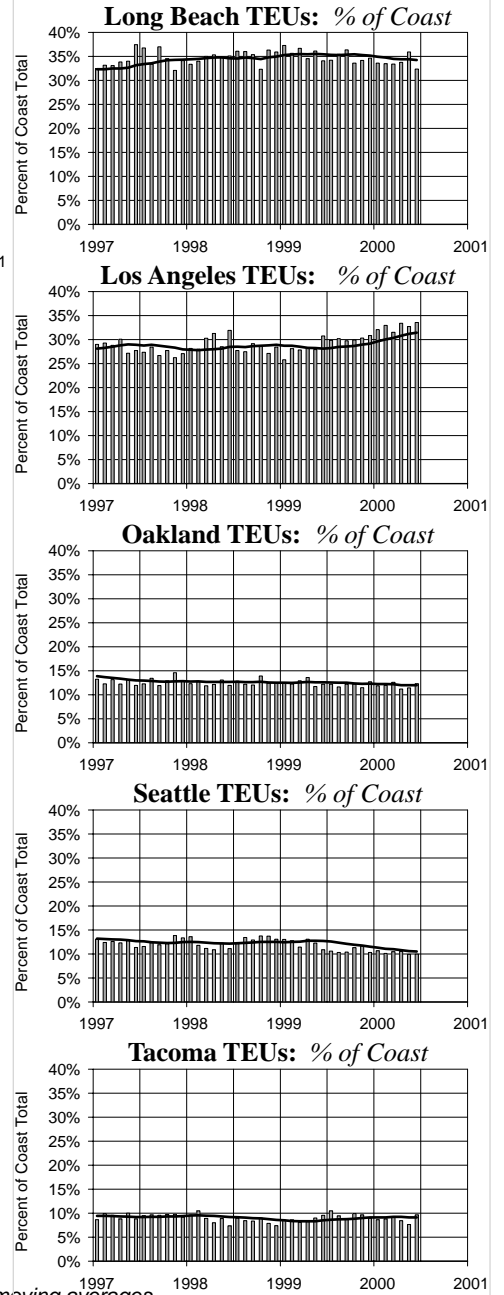
# Monthly Tonnage by Reporting Category: Discharged vs. Loaded

*Actual Tons Reported by Month*



In the Tonnage graphs above, bars represent monthly totals, and the lines show 12-month moving averages.

## Major Container Ports: Percent of Coast Total TEUs



## "Weighted" Tonnage: % Discharged vs. % Loaded

("Weighted" Tonnage = Containerized + 1/6 of Autos & Trucks + Lumber & Logs + General + 1/50 of Bulk)

% Discharged  % Loaded

