

The Big Picture: Waterborne Export and Import Cargo

U.S. waterborne foreign trade is big business. In global terms, nearly 20% of world trade passes through U.S. ports. The export and import value, weight, and the commodities that comprise this trade are summarized in the five tables that follow.

In *PMA Update* Vol. 12, issues No. 6 and No. 7, exports and imports were analyzed separately, and in both sets of data, tanker cargo was excluded. In this issue all waterborne cargo including tanker cargo is included, and exports and imports are compared side by side. Cargo is summarized by Harmonized Tariff Schedule (HTS) grouping, with each group identified by a roman numeral and description. Each group includes one or more cargo categories identified by the International Harmonized System 2-digit level (HS2) classification system. For example HTS group V, Mineral Products, includes HS2 number 25 (salt, sulfur, stone, lime, cement, etc.), number 26 (ores, slag, and ash), and number 27 (petroleum, coal, mineral waxes, etc.).

For a complete listing of the cargo types included in each HTS group, go to <http://www.usitc.gov/taffairs.htm>.

The tables in this report are summarized from a database produced by the U.S. Maritime Administration Office of Statistical and Economic Analysis for 1999.

Table 1 shows import and export data by cargo group. The total value per kilogram

for exports and imports turns out to be quite similar, \$0.60 for exports and \$0.627 for imports. The dollar value per kilogram varies widely among the various cargo groupings. The cargo group with the lowest value per kilogram in both exports and im-

Table 1: U.S. Exports & Imports by Cargo Grouping

HTS Group and Description	EXPORTS			IMPORTS		
	Value per Kilogram	% of Value	% of Weight	Value per Kilogram	% of Value	% of Weight
I Live Animals: Animal Products	\$ 1.407	3.3%	1.4%	\$ 3.478	1.5%	0.3%
II Vegetable Products	0.158	9.6	36.4	0.720	1.7	1.5
III Animal or Vegetable Facts, Oils, Waxes	0.499	0.9	1.1	0.953	0.2	0.1
IV Prepared Foodstuffs; Beverages, Spirits, Vinegar, Tobacco	0.642	7.1	6.7	1.221	3.0	1.5
IX Wood, Wood Charcoal, Cork, Basketware, Wickerwork	0.250	2.1	5.0	0.742	1.0	0.9
V Mineral Products	0.093	4.4	27.9	0.105	13.2	79.0
VI Products of Chemical or Allied Industries	1.110	15.9	8.6	0.781	4.6	3.7
VII Plastics, Rubber and Articles thereof	1.899	6.4	2.0	2.243	3.3	0.9
VIII Raw Hides, Skins, Leather, Handbags, Saddlery	2.454	0.8	0.2	7.414	1.1	0.1
X Pulp of Wood, other Fibrous Cellulose, Waste & Scrap Paper	0.517	4.7	5.4	1.062	1.3	0.8
XI Textile and Textile Articles	4.094	4.6	0.7	9.409	9.4	0.6
XII Footwear, Headgear, Umbrellas, Artificial Flowers, Feathers	5.146	0.2	0.0	8.594	3.1	0.2
XIII Articles of Stone, Plaster, Cement, Ceramic, Glass	1.739	0.9	0.3	1.009	1.4	0.9
XIV Pearls, Prec Stones, Metals, Coins, etc.	158.349	0.4	0.0	13.861	0.1	0.0
XIX Arms and Ammunition, Parts and Accessories	46.685	0.8	0.0	7.430	0.1	0.0
XV Base Metals and Articles of Base Metal	1.142	3.7	2.0	0.677	6.3	5.8
XVI Machinery and Mechanical Appliances, Electrical, TV, etc	9.656	19.6	1.2	9.389	22.8	1.5
XVII Vehicles, Aircraft, Vessels, Transport Equipment	9.199	10.0	0.6	10.131	16.8	1.0
XVIII Optical, Photographic, Measuring, Musical, Clocks	22.852	2.0	0.1	20.459	2.3	0.1
XX Miscellaneous Manufactured Articles	6.453	1.7	0.2	4.074	6.2	0.9
XXI Works of Art, Collectors' Pieces and Antiques	28.244	0.0	0.0	13.680	0.1	0.0
XXII Special Classifications	2.941	0.9	0.2	5.865	0.6	0.1
Total	\$0.600	100.0%	100.0%	\$0.627	100.0%	100.0%

**CONSUMER PRICE INDEX
U.S. CITY AVERAGE - ALL ITEMS
(1982-84 = 100)**

Urban Wage Earners & Clerical Workers

Month	1998	1999	2000	12 Mo.
Jan	158.4	161.0	165.5	2.80
Feb	158.5	161.1	166.4	3.29
Mar	158.7	161.4	167.8	3.97
Apr	159.1	162.7	167.9	3.20
May	159.5	162.8	168.1	3.26
Jun	159.7	162.8	169.2	3.93
Jul	159.8	163.3	169.4	3.74
Aug	160.0	163.8	169.3	3.36
Sep	160.2	164.7	170.4	3.46
Oct	160.6	165.0	170.6	3.39
Nov	160.7	165.1		2.74
Dec	160.7	165.1		2.74

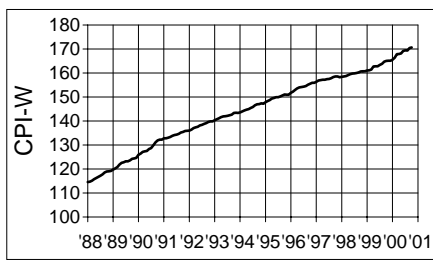


Table 2: Percent of Value by HTS Code by Cargo Grouping

HTS Group and Description	EXPORTS			IMPORTS		
	Atlantic	Gulf	West	Atlantic	Gulf	West
I Live Animals: Animal Products	18.8%	9.6%	71.6%	54.2%	3.5%	42.3%
II Vegetable Products	6.8	61.2	32.0	56.7	19.8	23.5
III Animal or Vegetable Facts, Oils, Waxes	10.6	77.8	11.6	62.5	15.4	22.1
IV Prepared Foodstuffs; Beverages, Spirits, Vinegar, Tobacco	41.4	16.0	42.6	65.6	8.3	26.1
IX Wood, Wood Charcoal, Cork, Basketware, Wickerwork	43.5	14.6	42.0	41.9	12.4	45.7
V Mineral Products	31.3	47.4	21.2	27.2	65.5	7.3
VI Products of Chemical or Allied Industries	33.5	38.8	27.7	55.7	15.5	28.8
VII Plastics, Rubber and Articles thereof	43.7	21.7	34.6	36.8	7.4	55.8
VIII Raw Hides, Skins, Leather, Handbags, Saddlery	18.5	3.3	78.2	18.2	1.7	80.0
X Pulp of Wood, other Fibrous Cellulose, Waste & Scrap Paper	53.9	17.4	28.7	50.8	8.6	40.6
XI Textile and Textile Articles	72.1	12.2	15.7	39.7	4.1	56.2
XII Footwear, Headgear, Umbrellas, Artificial Flowers, Feathers	58.5	4.1	37.4	22.0	1.0	77.0
XIII Articles of Stone, Plaster, Cement, Ceramic, Glass	52.2	9.6	38.2	47.7	8.7	43.6
XIV Pearls, Prec Stones, Metals, Coins, etc.	82.2	1.9	15.9	34.2	4.4	61.4
XIX Arms and Ammunition, Parts and Accessories	74.6	1.0	24.4	51.0	4.4	44.7
XV Base Metals and Articles of Base Metal	50.7	13.5	35.8	35.8	25.9	38.3
XVI Machinery and Mechanical Appliances, Electrical, TV, etc	52.0	18.7	29.2	25.3	4.0	70.7
XVII Vehicles, Aircraft, Vessels, Transport Equipment	63.9	11.8	24.3	37.8	11.8	50.4
XVIII Optical, Photographic, Measuring, Musical, Clocks	53.4	10.2	36.4	20.4	1.2	78.4
XX Miscellaneous Manufactured Articles	52.2	8.1	39.7	23.5	1.3	75.2
XXI Works of Art, Collectors' Pieces and Antiques	62.4	12.6	25.0	68.4	14.1	17.6
XXII Special Classifications	62.0	10.7	27.3	47.0	21.8	31.2
Total	43.2%	25.3%	31.5%	34.3%	15.9%	49.8%

Table 3: Combined Exports & Imports Weight and Value

	ATLANTIC		GULF		WEST COAST		TOTAL	
	Weight (in kg)	% of Total	Weight (in kg)	% of Total	Weight (in kg)	% of Total	Weight (in kg)	% of Total
Exports	61,724,163,095	6.2%	154,775,911,735	15.7%	74,549,626,822	7.5%	291,049,701,652	29.4%
Imports	198,380,964,823	20.1%	405,053,435,390	41.0%	94,209,414,325	9.5%	697,643,814,538	70.6%
Total	260,105,127,918	26.3%	559,829,347,125	56.6%	168,759,041,147	17.1%	988,693,516,190	100.0%
	Value	% of Total	Value	% of Total	Value	% of Total	Value	% of Total
Exports	\$ 75,393,718,135	12.3%	\$ 44,150,789,006	7.2%	\$ 54,977,795,867	9.0%	\$174,522,303,008	28.5%
Imports	\$150,162,815,483	24.5%	\$ 69,408,633,284	11.3%	\$218,016,617,369	35.6%	\$437,588,066,136	71.5%
Total	\$225,556,533,618	36.8%	\$113,559,422,290	18.6%	\$272,994,413,236	44.6%	\$612,110,369,144	100.0%

ports is V, Mineral products. This group is dominated by coal on the export side and by petroleum on the import side. Cargo group XVI, Machinery and Mechanical Appliances, Electrical, TV, etc. represents the highest percentage of the total value of both the export (19.6%) and import (22.8%) groups.

From Table 1 it may be inferred that container ships carry the value and that tankers and bulk carriers move the weight. In terms of weight of export cargo, group II, Vegetable Products (primarily grains) with 36.4% and group V, Mineral Products (primarily coal) with 27.9% dominate exports with a combined total of 64.3%. On the import side a single group; group V, Mineral products (primarily oil) dominates weight with 79% of the total.

Table 2 shows by value for each cargo category, the percent that is handled by coastal region separately for exports and imports. The Atlantic dominates exports with 43.2% of the total value. The West Coast, on the other hand, dominates imports with 49.8% of the total value.

Although it represents a small percentage in terms of weight and value, commodity group VIII, Raw hides, skins, leather, etc., is an example of exported raw materials that are returned as finished products. On the West Coast, the export of raw hides makes up most of the 78.2% percent of the value of group VIII, but makes up an even larger 80% of the value on the import side as finished leather goods.

Table 3 summarizes the combined weight and value of U.S. exports and imports for 1999. The Atlantic handled 26.3% of the weight and 26.3% of the value. The Gulf handled 56.6% of the total weight but only 18.6% of the value. The West Coast, on the other hand, handled 17.1% of the weight but 44.6% of the total value of U.S. waterborne foreign trade. Over 51% of the total U.S. container TEUs move through the West Coast, which accounts for the very high percentage of the total waterborne cargo value that moves through the West Coast.

Table 4 lists exports in order of value from high to low, and Table 5 lists imports in order of value.

Table 4: Exports in Order of Value

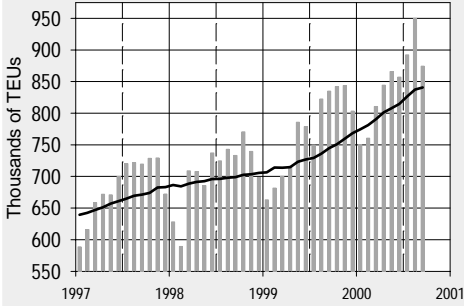
HTS Group and Description	Coastal Region as a Percent of Total Exports Value			Percent of Total Value	Percent of Total Weight
	Atlantic	Gulf	West		
XVI Machinery and Mechanical Appliances, Electrical, TV, etc	10.2%	3.7%	5.7%	19.6%	1.2%
VI Products of Chemical or Allied Industries	5.3	6.2	4.4	15.9	8.6
XVII Vehicles, Aircraft, Vessels, Transport Equipment	6.4	1.2	2.4	10.0	0.6
II Vegetable Products	0.7	5.9	3.1	9.6	36.4
IV Prepared Foodstuffs: Beverages, Spirits, Vinegar, Tobacco	3.0	1.1	3.0	7.1	6.7
VII Plastics, Rubber and Articles thereof	2.8	1.4	2.2	6.4	2.0
X Pulp of Wood, other Fibrous Cellulose, Waste & Scrap Paper	2.5	0.8	1.3	4.7	5.4
XI Textile and Textile Articles	3.3	0.6	0.7	4.6	0.7
V Mineral Products	1.4	2.1	0.9	4.4	27.9
XV Base Metals and Articles of Base Metal	1.9	0.5	1.3	3.7	2.0
I Live Animals; Animal Products	0.6	0.3	2.3	3.3	1.4
IX Wood, Wood Charcoal, Cork, Basketware, Wickerwork	0.9	0.3	0.9	2.1	5.0
XVIII Optical, Photographic, Measuring, Musical, Clocks	1.1	0.2	0.7	2.0	0.1
XX Miscellaneous Manufactured Articles	0.9	0.1	0.7	1.7	0.2
III Animal or Vegetable Facts, Oils, Waxes	0.1	0.7	0.1	0.9	1.1
XIII Articles of Stone, Plaster, Cement, Ceramic, Glass	0.5	0.1	0.4	0.9	0.3
XXII Special Classifications	0.5	0.1	0.2	0.9	0.2
XIX Arms and Ammunition, Parts and Accessories	0.6	0.0	0.2	0.8	0.0
VIII Raw Hides, Skins, Leather, Handbags, Saddlery	0.1	0.0	0.6	0.8	0.2S
XIV Pearls, Prec Stones, Metals, Coins, etc.	0.3	0.0	0.1	0.4	0.0
XII Footwear, Headgear, Umbrellas, Artificial Flowers, Feathers	0.1	0.0	0.1	0.2	0.0
XXI Works of Art, Collectors' Pieces and Antiques	0.0	0.0	0.0	0.0	0.0
Total	43.2%	25.3%	31.5%	100.0%	100.0%

Table 5: Imports in Order of Value

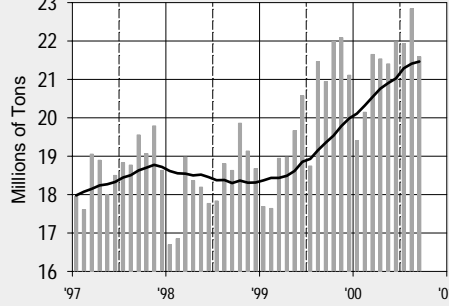
HTS Group and Description	Coastal Region as a Percent of Total Imports Value			Percent of Total Value	Percent of Total Weight
	Atlantic	Gulf	West		
XVI Machinery and Mechanical Appliances, Electrical, TV, etc	5.7%	0.9%	16.1%	22.8%	1.5%
XVII Vehicles, Aircraft, Vessels, Transport Equipment	6.4	2.0	8.5	16.8	1.0
V Mineral Products	3.6	8.6	1.0	13.2	79.0
XI Textile and Textile Articles	3.7	0.4	5.3	9.4	0.6
XV Base Metals and Articles of Base Metal	2.2	1.6	2.4	6.3	5.8
XX Miscellaneous Manufactured Articles	1.4	0.1	4.6	6.2	0.9
VI Products of Chemical or Allied Industries	2.6	0.7	1.3	4.6	3.7
VII Plastics, Rubber and Articles thereof	1.2	0.2	1.8	3.3	0.9
XII Footwear, Headgear, Umbrellas, Artificial Flowers, Feathers	0.7	0.0	2.4	3.1	0.2
IV Prepared Foodstuffs: Beverages, Spirits, Vinegar, Tobacco	2.0	0.2	0.8	3.0	1.5
XVIII Optical, Photographic, Measuring, Musical, Clocks	0.5	0.0	1.8	2.3	0.1
II Vegetable Products	1.0	0.3	0.4	1.7	1.5
I Live Animals; Animal Products	0.8	0.1	0.7	1.5	0.3
XIII Articles of Stone, Plaster, Cement, Ceramic, Glass	0.7	0.1	0.6	1.4	0.9
X Pulp of Wood, other Fibrous Cellulose, Waste & Scrap paper	0.7	0.1	0.5	1.3	0.8
VIII Raw Hides, Skins, Leather, Handbags, Saddlery	0.2	0.0	0.9	1.1	0.1
IX Wood, Wood Charcoal, Cork, Basketware, Wickerwork	0.4	0.1	0.5	1.0	0.9
XXII Special Classifications	0.3	0.1	0.2	0.6	0.1
III Animal or Vegetable Facts, Oils, Waxes	0.1	0.0	0.0	0.2	0.1
XXI Works of Art, Collectors' Pieces and Antiques	0.1	0.0	0.0	0.1	0.0
XIV Pearls, Prec Stones, Metals, Coins, etc.	0.0	0.0	0.1	0.1	0.0
XIX Arms and Ammunition, Parts and Accessories	0.0	0.0	0.0	0.1	0.0
Total	34.3%	15.9%	49.8%	100.0%	100.0%

Monthly Tonnage by Reporting Category and Weekly Hours by Occupation Code Type

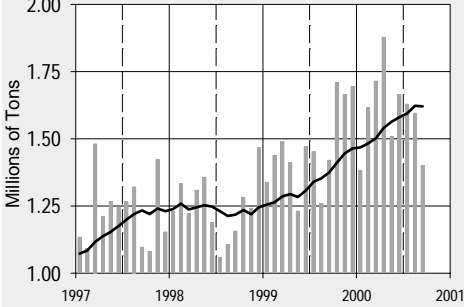
Containers (TEUs)



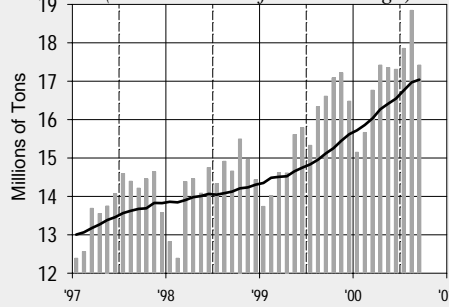
Coast Total Tonnage



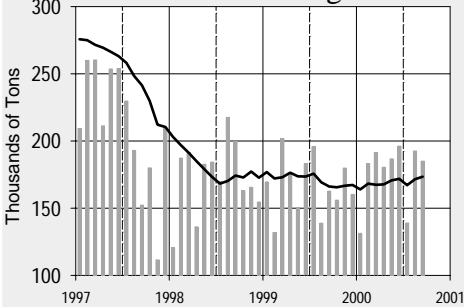
Automobiles & Trucks



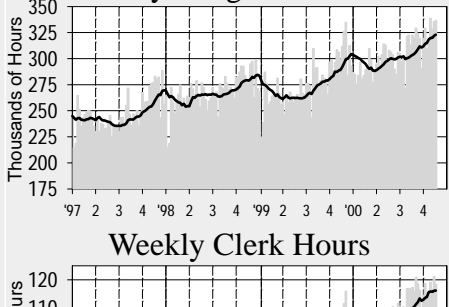
"Weighted" Total Tonnage
(Includes 1/50 of Bulk Tonnage)



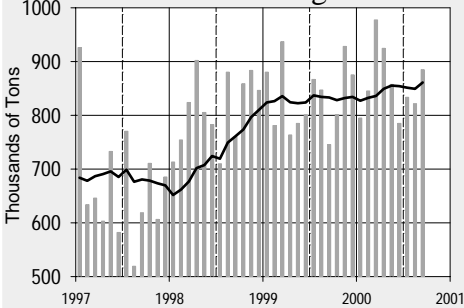
Lumber & Logs



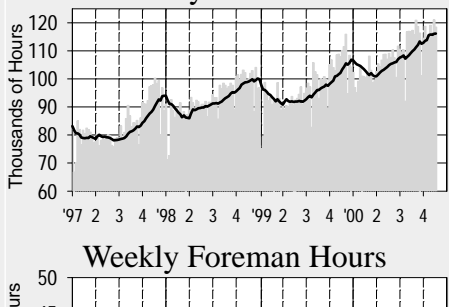
Weekly Longshore Hours



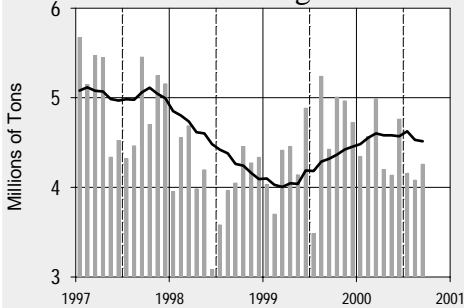
General Cargo



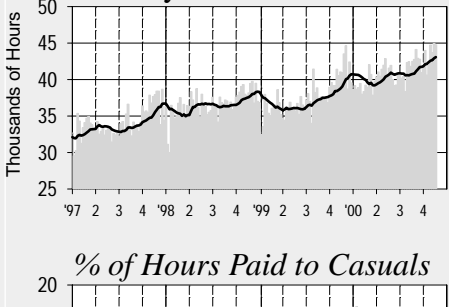
Weekly Clerk Hours



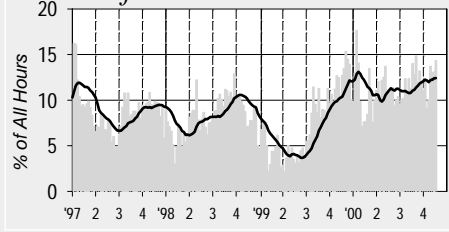
Bulk Cargo



Weekly Foreman Hours

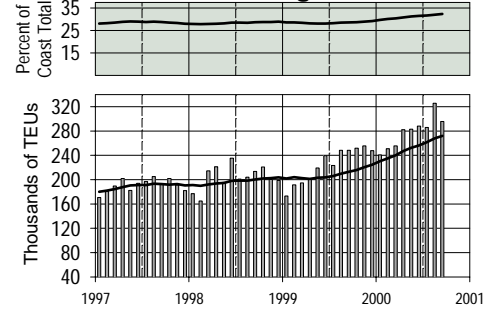


% of Hours Paid to Casuals

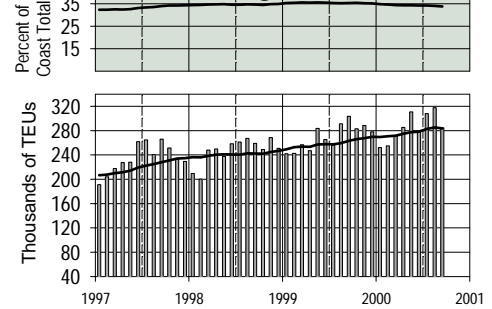


Major Container Ports: Monthly TEUs Reported & Percent of Coast Total TEUs

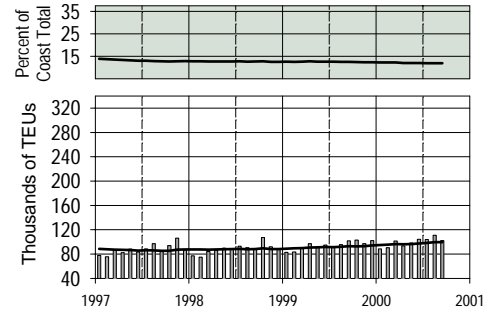
Los Angeles



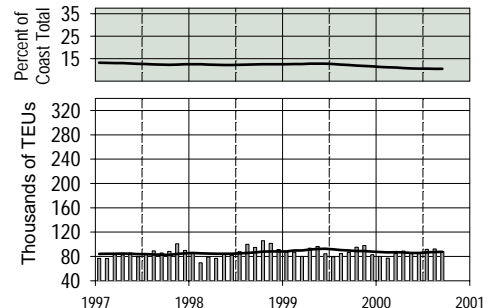
Long Beach



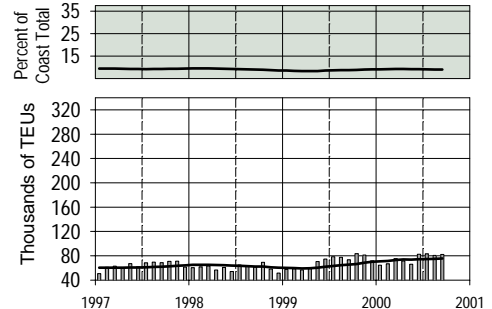
Oakland



Seattle



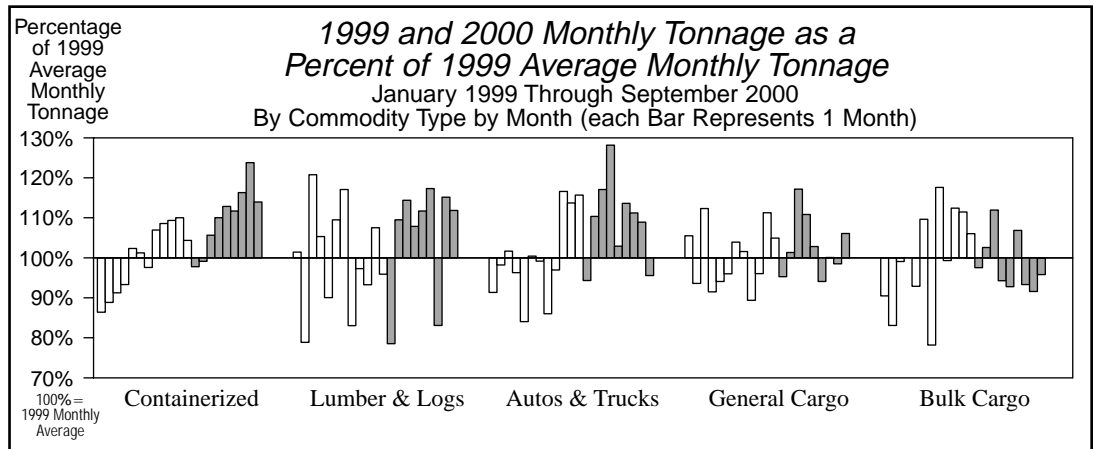
Tacoma



Shaded graphs show 12-month moving averages of TEUs reported in the port as a % of the coast total. Vertical bars represent TEUs reported in the port each month; lines are 12-month moving averages.

ILWU LOCAL/PORT AREA	REGISTRATION		STATS (For 52 Payroll Weeks)							PORT HOURS (Year-to-date)					TONNAGE BY PORT AREA (Year-to-date)									
	(At 10/27/00)		(Ending 10/27/00)		Hours Paid:					Hours Paid at					% of Port Total (Year-to-Date)					% of 2000 YTD				
	Class	Number	Annual	Wkly	Out of	Other	Cas-	Inac-	P/R Wks	1-44, '00	Occ Codes	Exp.	Cont'r	Other	Lmbr	Autos	Bulk	2000 YTD	Coast	'00 as a	Cstwise			
TOTAL	"B"	Working	Hrs Pd	PGP	Port	Local	uals	tives	Avg. Wkly	% Cst	Clk	Frm	Rates*	RU's	Gen'l	Logs	Trucks	Cargo	TOTAL	(Jan-Sep)	Total	% of '99	Loaded	
NO.	NO.	NO.	HRS	\$	%	%	%	%	HRS	%	%	%	%	%	%	%	%	%	%	TONS	%	%	TONS	
Longshoremen																								
<i>Southern California</i>																								
29 San Diego	58	14	58	2,297	< 1	6.1	4.8	38.3	1.3	4,269	0.9	9.3	12.6	29.3	< 0.1	3.5	1.8	58.2	36.5	100.0	3,640,485	1.9	116.7	1,080
13 Los Angeles/Long Beach	4,333	890	4,279	2,131	< 1	0.2	1.9	10.1	0.6	290,097	62.2	24.9	9.4	21.2	82.0	3.9	0.1	4.4	9.6	100.0	105,049,229	54.6	115.3	107,355
46 Port Hueneme	76	2	73	2,203	< 1	6.5	5.5	47.7	0.2	6,863	1.5	16.5	6.5	25.6	7.3	20.7	-	70.0	2.0	100.0	2,491,470	1.3	120.5	0
Southern California Total	4,467	906	4,410	2,134	< 1	0.4	2.0	11.5	0.6	301,229	64.6	24.5	9.3	21.4	77.6	4.3	0.2	7.6	10.3	100.0	111,181,184	57.8	115.4	108,435
<i>Northern California</i>																								
10 San Francisco Bay Area	1,129	275	1,070	1,780	< 1	0.9	1.5	1.9	0.9	53,940	11.6	26.1	8.4	20.2	87.3	2.9	< 0.1	4.4	5.4	100.0	17,910,018	9.3	108.5	0
54 Stockton	59	25	58	1,600	24	7.9	6.8	16.0	0.5	2,723	0.6	18.4	7.8	13.8	< 0.1	11.3	0.4	-	88.3	100.0	1,254,932	0.7	101.7	0
18 Sacramento	22	1	22	1,716	122	8.7	18.4	18.8	2.5	1,431	0.3	24.1	7.0	10.7	-	24.8	0.2	-	75.1	100.0	646,342	0.3	98.8	0
14 Eureka	26	1	24	1,331	186	30.3	8.9	16.5	3.7	642	0.1	10.9	9.9	15.0	-	28.3	31.3	-	40.4	100.0	417,884	0.2	87.3	0
Northern California Total	1,236	302	1,174	1,760	7	1.8	2.3	3.2	1.0	58,736	12.6	25.5	8.4	19.6	77.3	4.6	0.7	3.9	13.5	100.0	20,229,176	10.5	107.2	0
<i>Oregon</i>																								
12 North Bend/Coos Bay	78	4	73	1,247	259	46.8	5.1	2.2	2.2	1,199	0.3	8.6	7.7	1.3	< 0.1	0.6	8.4	-	91.0	100.0	1,588,739	0.8	91.6	46,290
53 Newport	10	3	10	861	385	90.5	13.1	0.0	0.0	19	0.0	0.0	0.0	2.8	-	-	100.0	-	-	100.0	2,890	0.0	33.3	0
50 Astoria	36	0	35	745	515	85.3	1.7	0.0	1.4	78	0.0	0.0	0.9	0.0	-	-	100.0	-	-	100.0	12,522	0.0	77.6	0
8 Portland	457	59	445	1,843	10	4.0	8.8	3.3	1.1	21,645	4.6	15.6	7.5	9.5	19.2	4.1	0.2	18.6	58.0	100.0	14,172,320	7.4	102.4	47,681
4 Vancouver, WA	145	35	143	1,821	13	12.1	13.5	5.7	1.3	6,477	1.4	14.2	6.6	9.8	0.3	8.6	0.4	12.8	77.9	100.0	3,505,239	1.8	95.4	0
21 Longview, WA	189	29	189	2,022	6	11.5	7.6	4.7	1.7	8,963	1.9	9.4	8.0	10.6	< 0.1	10.3	7.1	-	82.5	100.0	6,940,446	3.6	112.0	28,081
Oregon Total	915	130	895	1,775	54	11.4	9.2	4.0	1.3	38,381	8.2	13.6	7.5	9.6	10.4	6.1	2.6	11.8	69.1	100.0	26,222,157	13.6	103.0	122,052
<i>Washington</i>																								
24 Aberdeen	66	2	66	1,369	172	29.9	12.9	4.3	0.3	1,379	0.3	5.6	5.4	1.4	2.2	9.8	88.0	-	-	100.0	240,292	0.1	84.2	126,242
27 Port Angeles	49	0	49	722	573	75.0	1.8	1.3	10.4	236	0.1	7.5	7.8	0.5	-	-	12.1	-	87.9	100.0	166,858	0.1	87.1	37,707
51 Port Gamble	10	0	10	533	686	84.4	0.0	0.0	0.0	16	0.0	0.0	0.0	0.0	-	-	-	-	-	-	0	0.0	-	0
47 Olympia	27	5	27	768	424	49.7	13.7	5.3	1.7	250	0.1	3.3	19.3	4.2	0.9	1.1	42.1	-	55.9	100.0	24,644	0.0	74.2	0
23 Tacoma	564	154	562	2,010	< 1	0.3	6.9	10.4	0.4	33,151	7.1	21.8	8.0	15.6	62.8	0.8	1.5	8.2	26.7	100.0	18,195,757	9.5	109.7	0
19 Seattle	566	115	559	1,848	< 1	3.1	5.0	8.3	0.3	31,317	6.7	24.8	8.0	6.6	86.5	1.3	< 0.1	3.6	8.6	100.0	15,192,872	7.9	96.4	35,408
32 Everett	42	0	40	1,113	217	11.5	7.9	7.4	2.4	1,006	0.2	8.1	9.0	3.1	4.4	1.0	14.9	-	79.8	100.0	300,708	0.2	82.1	19,785
25 Anacortes	12	0	12	1,140	219	21.3	22.5	2.0	0.5	335	0.1	10.8	14.8	1.3	-	-	8.2	-	91.8	100.0	194,515	0.1	115.5	0
7 Bellingham	28	0	28	1,044	286	19.7	14.9	8.3	2.1	602	0.1	9.9	11.3	4.3	-	8.6	-	-	91.4	100.0	523,362	0.3	89.5	0
Washington Total	1,364	276	1,353	1,775	57	4.9	6.4	9.1	0.5	68,292	14.6	22.4	8.1	10.7	70.6	1.2	1.7	5.9	20.7	100.0	34,839,008	18.1	102.5	219,141
Total/Average	7,982	1,614	7,832	1,975	17	2.4	3.4	9.4	0.7	466,650	100.0	23.4	8.9	18.6	67.2	4.0	0.8	7.5	20.5	100.0	192,471,524	100.0	110.2	449,627
% Change from Update of 11/99	+5.9	+12.3	+5.8	+1.6	-15.0	+0.5	+0.6	+2.3	+0.5	+14.2	+0.1	-0.2	+0.7		13.3%	4.3%	5.1%	15.0%	1.9%	10.5%			-16.1%	

Clerks												
29 San Diego	4	0	4	***	***	9.7	39.2	15.0	0.0			
46 Port Hueneme	12	0	12	2,726	-	1.5	34.1	10.2	0.7			
63 Los Angeles/Long Beach	974	4	961	2,754	< 1	0.2	10.8	19.5	0.5			
14 Eureka	2	0	2	***	***	20.7	47.8	0.7	5.6			
30 SF Bay Area & Delta	275	8	272	2,414	< 1	2.6	13.1	2.1	1.4			
40 Portland	98	0	96	2,385	13	33.6	13.2	2.1	2.2			
23 Tacoma	75	0	75	2,802	-	0.0	41.1	2.6	1.9			
52 Seattle	157	0	153	2,610	1	15.0	12.9	2.9	2.0			
Total/Average	1,597	12	1,575	2,659	1	3.9	13.7	13.8	0.9			
Foremen/Walking Bosses												
29 San Diego	3	0	3	***	***	1.4	67.1	2.3	0.4			
46 Port Hueneme	7	-	7	2,516	4	1.7	27.4	0.5	0.2			
94 Los Angeles/Long Beach	396	-	395	3,580	< 1	0.3	6.4	0.0	2.1			
91 Northern Calif. Area	73	-	73	2,890	12	0.6	18.6	0.0	1.4			
92 Portland	48	-	46	2,549	25	8.2	18.6	0.0	5.9			
98 Seattle	98	-	98	2,731	13	10.5	12.6	0.0	0.5			
Total/Average	625		622	3,274	5	2.2	10.6	0.0	2.0			



* Longshore and Clerk hours only. *** "Annual Hrs Pd" and "Wkly PGP" for groups of less than five individuals are not shown, but the data are included in category averages.