



Dates Set for Safety Awards Presentations

Dates have been set for the 2000 West Coast Annual Safety Awards presentations in each of the Areas. Each Area banquet will recognize and honor those companies with the lowest accident injury incidence rates in calendar year 2000.

Awards are presented based on company performance standings in each Area and for Coastwide performance standings.

Special awards will be presented to companies and ILWU locals in recognition of significant reductions in injury incidence rates.

Individuals who have rescued or prevented others for being seriously injured on the job will also be recognized.

Washington Area

Date: Tuesday, February 27, 2001
Time: 6:00 p.m. Reception, 7:00 p.m. Dinner, 8:00-10:00 p.m. Awards Ceremony
Location: Seattle Airport Hilton
Address: 17620 Pacific Highway South, Seattle, Washington 98188

Oregon Area

Date: Thursday, March 1, 2001
Time: 6:00 p.m. Reception, 7:00 p.m. Dinner, 8:00-10:00 p.m. Awards Ceremony
Location: Riverview Ballroom
Address: Double Tree Hotel (Columbia River), 1401 N. Hayden Island Drive, Portland, Or 97217

Southern California Area

Date: Friday, March 2, 2001
Time: 6:00 p.m. Reception, 7:00 p.m. Dinner, 8:00-10:00 p.m. Awards Ceremony
Location: Hyatt Regency
Address: 200 South Pine Ave., Long Beach, Ca 90802

Northern California Area

Date: Monday, March 5, 2001
Time: 6:00 p.m. Reception, 7:00 p.m. Dinner, 8:00-10:00 p.m. Awards Ceremony
Location: International Ball Room
Address: Oakland Airport Hilton, 1 Hegenberger Road, Oakland, CA 94614

“Real Time” Data Retrieval Coming to PMA Website; PMA UPDATE to Take on New Role

An exciting new project is planned for the PMA website, and in conjunction with the development of this project, there will be several other changes. After 12 years of monthly publication, the PMA UPDATE is changing formats and will be dedicated to special in-depth projects.

It is anticipated that these special projects will number two or three a year. The West Coast tonnage, registration, and hours data that was published regularly in the PMA Update will be retrievable on the PMA website in an easy to use customizable format. Also, some data that has been published in the PMA Annual Report will also be moved to the web. This web-based data will offer a much higher level of service to our members and to the public.

The new web resources will allow the user to have nearly real time data access. The databases will be updated on a regular basis. Registration counts for the ports or port areas will be updated each week day, total hours paid to longshore, clerk, and walking bosses will be updated weekly, and tonnage will be updated monthly.

There will be two levels of rollout for this project. The first rollout will include reports that are available for all web users. Later in the year, a second level rollout specifically tailored to the individual PMA member companies will be brought on line. This level will be accessed by specific company personnel in a manner similar to how you might access your online bank account or check your 401(k) account through a user identification and logon password.

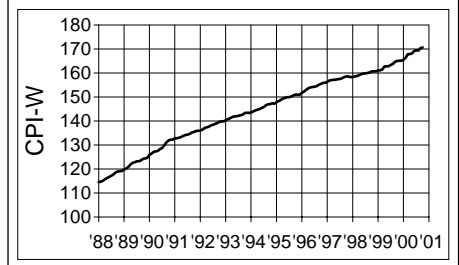
The general user may custom tailor his or her data request using their web browser and pointing device. After opening the home page on www.pmanet.org, the user will select Research Reports and will move through various menus to select the parameters to build a report. Once the parameters have been selected, the user selects the

submit request button and the request is sent to the PMA report server. The report will be produced on that server using a product called WebFOCUS™, produced by Information Builders, Inc.

After the report is completed, it is returned to the user’s browser. It will take from a few seconds to a few minutes to calculate the report depending on the complexity and the size of the request. The user will be offered a series of options for report output selected prior to the request submission, either Adobe Acrobat™, HTML, MS Excel™, or MS Excel 2000™.

CONSUMER PRICE INDEX U.S. CITY AVERAGE - ALL ITEMS (1982-84 = 100)

Table with 5 columns: Month, 1998, 1999, 2000, 12 Mo. and 1 row of sub-header: Urban Wage Earners & Clerical Workers. Rows include months from Jan to Dec with corresponding CPI values.



Longshore Pay Guarantee Payments in 2000 Show 9% Reduction

Longshore pay guarantee payments totaled \$7,287,360 in 2000. This is a 9.2% decrease from the \$7,958,636 paid in 1999, and a 15.9% reduction from the \$8.4 million paid in 1998.

The table below shows total PGP paid to members of each longshore local by year for the past five years. It also shows the percent of the coast total longshore PGP that the local received and the percent of coast year-end longshore registration in the local.

The table at the bottom of the page shows the longshore locals ranked in de-

creasing order by the total longshore PGP paid in 2000. The amount paid to each local in the previous four years is also shown with the year-end longshore registration and ranking in the earlier years.

Port Angeles received the most longshore PGP in 2000, almost \$1.5 million, and it has been ranked first or second each of the past five years. Astoria, which was ranked first in 1996 and 1997, has dropped to third position as its registration has declined from 56 to 35.

Five locals in the Pacific Northwest,

Port Angeles, North Bend, Astoria, Olympia, and Aberdeen, accounted for more than 65% of the payments in 2000. The top ten locals (by amount paid in 2000) were paid almost 90% of the total longshore PGP in 2000.

Five locals show payments per registrant of more than \$20,000 this year: Port Gamble with \$36,775 per registrant; Port Angeles, \$30,528; Astoria, \$27,609; Olympia, \$24,365; and Newport, \$20,363. Coastwise, the average per registrant was \$908 compared to \$1,057 last year.

Total Longshore PGP Paid by Year: 1996 - 2000

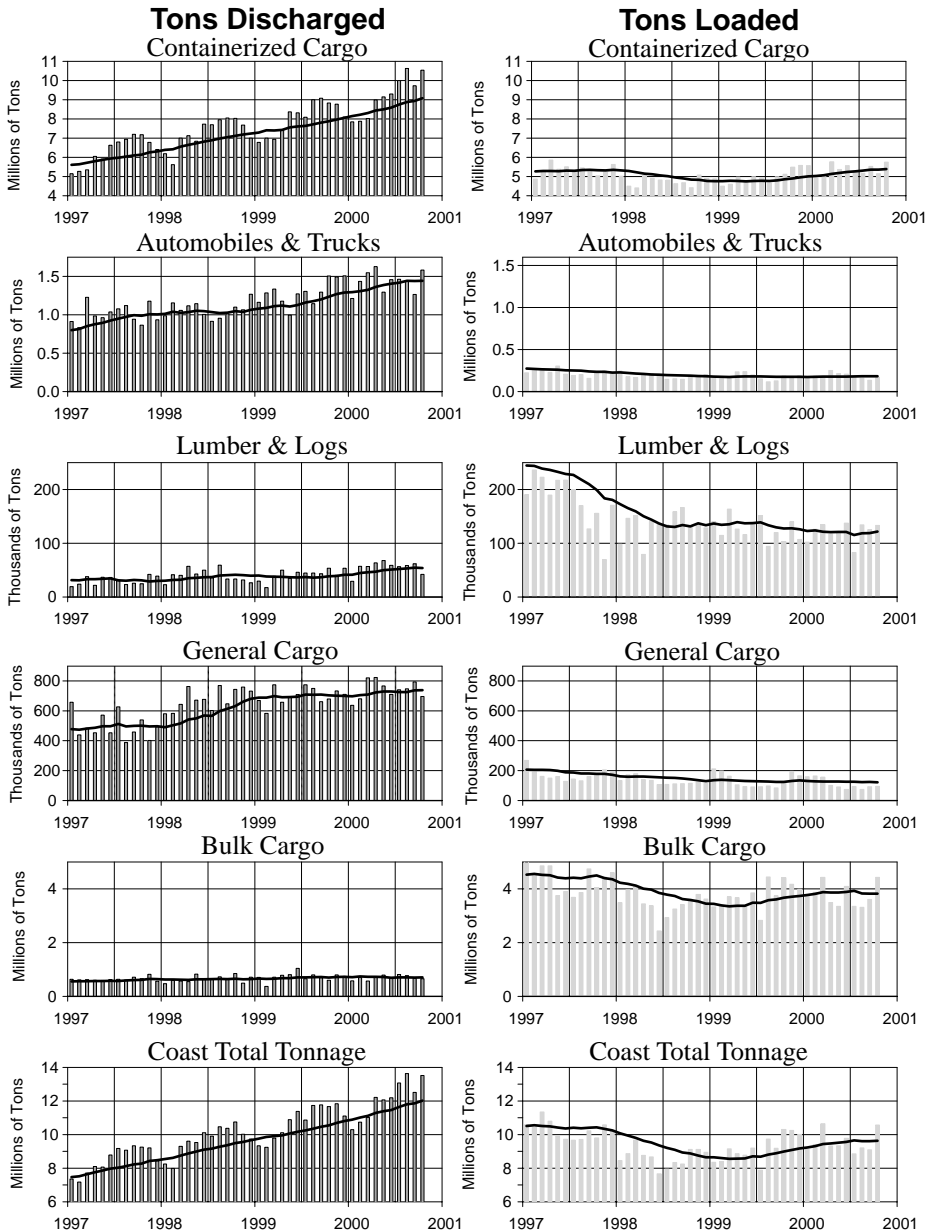
	2000			1999			1998			1997			1996		
	PGP Paid	% of Coast PGP	Reg'n	PGP Paid	% of Coast PGP	Reg'n	PGP Paid	% of Coast PGP	Reg'n	PGP Paid	% of Coast PGP	Reg'n	PGP Paid	% of Coast PGP	Reg'n
Southern California															
13 LA/LB	\$ 35,079	0.5%	54.4%	\$ 14,419	0.2%	53.8%	\$ 6,287	0.1%	51.8%	\$ 3,323	0.1%	49.8%	\$ 17,612	0.3%	46.3%
29 San Diego	1,271	0.0	0.7	1,794	0.0	0.7	7,160	0.1	0.7	9,244	0.1	0.8	35,504	0.6	0.7
46 Port Hueneme	1,371	0.0	0.9	4,632	0.1	1.1	3,098	0.0	1.1	12,154	0.2	1.2	8,606	0.2	1.3
Northern California															
10 SF Bay Area	\$4,057	0.1%	14.3%	\$17,093	0.2%	13.1%	\$12,363	0.1%	14.0%	\$ 71,437	1.2%	14.2%	\$ 111,742	2.0%	14.3%
14 Eureka	217,440	3.0	0.3	369,990	4.6	0.4	631,453	7.5	0.4	559,247	9.1	0.4	471,372	8.6	0.5
18 Sacramento	135,271	1.9	0.3	145,684	1.8	0.3	229,683	2.7	0.3	227,532	3.7	0.4	237,062	4.3	0.4
54 Stockton	55,398	0.8	0.7	137,783	1.7	0.7	223,063	2.6	0.8	144,440	2.3	0.8	161,186	2.9	0.8
Oregon															
4 Vancouver, WA	\$ 112,746	1.5%	1.8%	\$ 103,081	1.3%	1.9%	\$ 88,582	1.0%	2.0%	\$ 61,831	1.0%	2.2%	\$ 23,790	0.4%	2.3%
8 Portland	224,157	3.1	5.8	253,998	3.2	6.2	288,638	3.4	6.2	277,421	4.5	6.4	133,680	2.4	7.2
12 North Bend	999,904	13.7	1.0	1,175,135	14.8	1.2	873,758	10.3	1.2	316,748	5.1	1.4	185,259	3.4	1.6
21 Longview, WA	65,918	0.9	2.3	94,859	1.2	2.5	229,043	2.7	2.6	164,645	2.7	2.9	104,109	1.9	3.1
50 Astoria	966,327	13.3	0.4	1,184,335	14.9	0.6	1,346,723	16.0	0.7	1,226,333	19.8	0.8	1,093,153	20.0	0.9
53 Newport	203,633	2.8	0.1	186,828	2.3	0.1	198,800	2.4	0.1	171,540	2.8	0.1	134,625	2.5	0.1
Washington															
7 Bellingham	\$ 445,957	6.1%	0.3%	\$ 369,026	4.6%	0.4%	\$ 488,089	5.8%	0.5%	\$ 192,839	3.1%	0.5%	\$ 96,238	1.8%	0.5%
19 Seattle	24,391	0.3	7.1	28,095	0.4	7.6	18,623	0.2	7.8	4,677	0.1	8.3	30,710	0.6	9.0
23 Tacoma	4,361	0.1	7.0	1,063	0.0	6.5	2,606	0.0	6.6	2,574	0.0	6.3	0	0.0	7.0
24 Aberdeen	637,719	8.8	0.8	610,566	7.7	0.9	661,849	7.8	0.9	452,150	7.3	1.0	427,677	7.8	1.4
25 Anacortes	149,632	2.1	0.1	151,243	1.9	0.2	173,583	2.1	0.2	100,508	1.6	0.2	136,219	2.5	0.2
27 Port Angeles	1,495,870	20.5	0.6	1,528,455	19.2	0.7	1,496,518	17.7	0.7	1,134,536	18.4	0.8	832,677	15.2	0.9
32 Everett	481,258	6.6	0.5	624,197	7.8	0.6	665,010	7.9	0.7	410,046	6.6	0.8	538,282	9.8	1.1
47 Olympia	657,853	9.0	0.3	539,785	6.8	0.4	310,606	3.7	0.4	201,618	3.3	0.4	378,621	6.9	0.3
51 Port Gamble	367,747	5.0	0.1	416,578	5.2	0.1	487,607	5.8	0.2	423,070	6.8	0.2	309,668	5.7	0.2
Totals	\$7,287,360	100.0%	100.0%	\$7,958,636	100.0%	100.0%	\$8,443,140	100.0%	100.0%	\$6,167,914	100.0%	100.0%	\$5,467,792	100.0%	100.0%

Longshore Locals Ranked by Total Longshore PGP Paid in 2000

	2000			1999			1998			1997			1996		
	PGP Paid	Reg'n	Rank	PGP Paid	Reg'n	Rank	PGP Paid	Reg'n	Rank	PGP Paid	Reg'n	Rank	PGP Paid	Reg'n	Rank
27 Port Angeles	\$1,495,870	49	1	\$1,528,455	53	1	\$1,496,518	55	1	\$1,134,536	56	2	\$ 832,677	58	2
12 North Bend	999,904	78	2	1,175,135	89	3	873,758	93	3	316,748	102	7	185,259	101	9
50 Astoria	966,327	35	3	1,184,335	43	2	1,346,723	50	2	1,226,333	54	1	1,093,153	56	1
47 Olympia	657,853	27	4	539,785	28	6	310,606	30	9	201,618	26	10	378,621	22	6
24 Aberdeen	637,719	66	5	610,566	66	5	661,849	71	5	452,150	73	4	427,677	89	5
32 Everett	481,258	41	6	624,197	48	4	665,010	55	4	410,046	60	6	538,282	68	3
7 Bellingham	445,957	28	7	369,026	32	9	488,089	35	7	192,839	37	11	96,238	32	16
51 Port Gamble	367,747	10	8	416,578	11	7	487,607	13	8	423,070	13	5	309,668	13	7
8 Portland	224,157	462	9	253,998	464	10	288,638	467	10	277,421	455	8	133,680	465	13
14 Eureka	217,440	26	10	369,990	30	8	631,453	31	6	559,247	31	3	471,372	34	4
53 Newport	203,633	10	11	186,828	8	11	198,800	8	14	171,540	8	12	134,625	8	12
25 Anacortes	149,632	12	12	151,243	13	12	173,583	13	15	100,508	13	15	136,219	13	11
18 Sacramento	135,271	22	13	145,684	22	13	229,683	24	11	227,532	25	9	237,062	29	8
4 Vancouver, WA	112,746	147	14	103,081	143	15	88,582	149	16	61,831	156	17	23,790	148	19
21 Longview, WA	65,918	187	15	94,859	191	16	229,043	191	12	164,645	204	13	104,109	203	15
54 Stockton	55,398	59	16	137,783	54	14	223,063	60	13	144,440	54	14	161,186	49	10
13 LA/LB	35,079	4,362	17	14,419	4,048	19	6,287	3,881	20	3,323	3,521	21	17,612	2,992	20
19 Seattle	24,391	570	18	28,095	576	17	18,623	583	17	4,677	587	20	30,710	579	18
23 Tacoma	4,361	558	19	1,063	491	22	2,606	491	22	2,574	448	22	0	455	22
10 SF Bay Area	4,057	1,144	20	17,093	986	18	12,363	1,049	18	71,437	1,002	16	111,742	925	14
46 Port Hueneme	1,371	75	21	4,632	81	20	3,098	82	21	12,154	85	18	8,606	85	21
29 San Diego	1,271	56	22	1,794	53	21	7,160	55	19	9,244	55	19	35,504	43	17

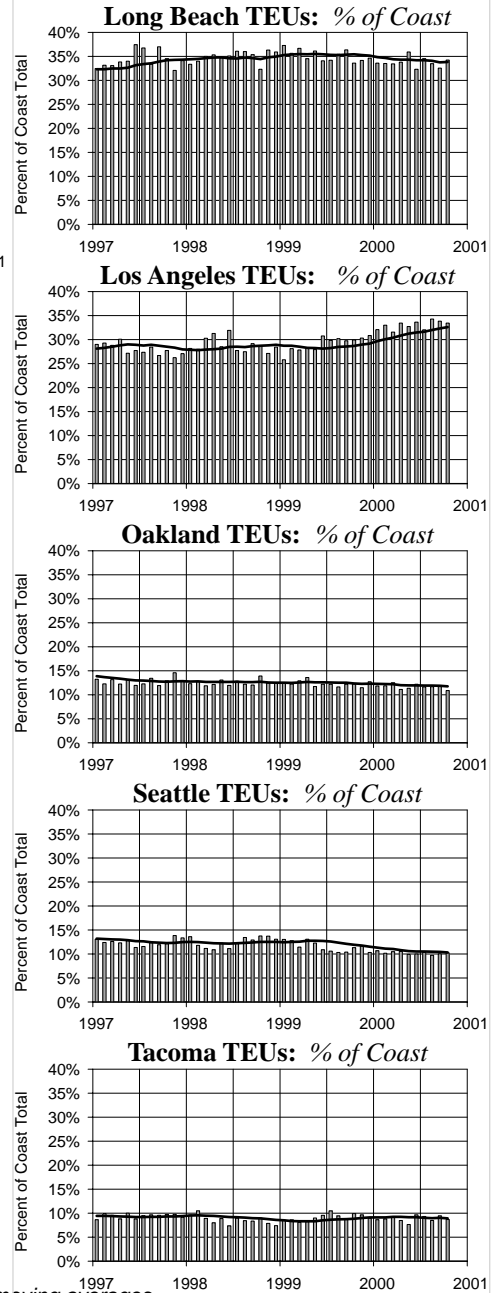
Monthly Tonnage by Reporting Category: Discharged vs. Loaded

Actual Tons Reported by Month



In the Tonnage graphs above, bars represent monthly totals, and the lines show 12-month moving averages.

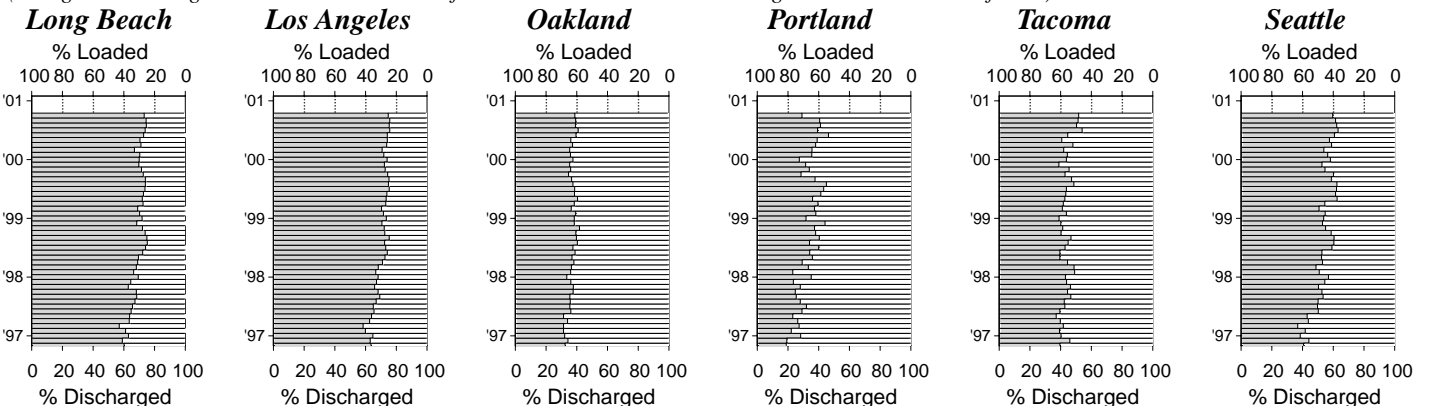
Major Container Ports: Percent of Coast Total TEUs



"Weighted" Tonnage: % Discharged vs. % Loaded

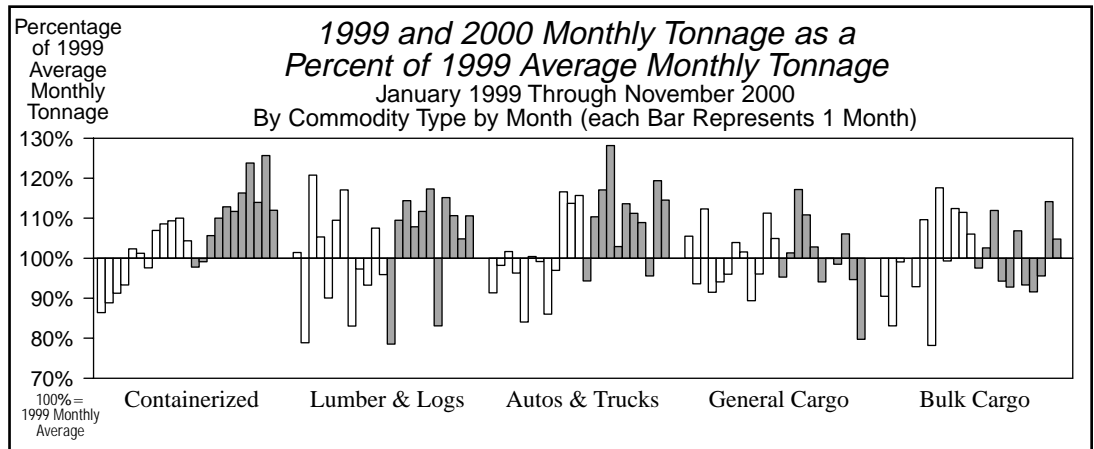
("Weighted" Tonnage = Containerized + 1/6 of Autos & Trucks + Lumber & Logs + General + 1/50 of Bulk)

% Discharged % Loaded



ILWU LOCAL/PORT AREA	REGISTRATION		STATS (For 52 Payroll Weeks)							PORT HOURS (Year-to-date)					TONNAGE BY PORT AREA (Year-to-date)									
	(At 12/29/00)		(Ending 12/29/00)		Hours Paid:					Hours Paid at					% of Port Total (Year-to-Date)					% of 2000 YTD				
	Class	Number	Annual	Wkly	Out of	Other	Cas-	Inac-	P/R Wks 2, '00-1, '01	Occ Codes				2000 YTD					2000 YTD					
TOTAL	"B"	Working	Hrs Pd	PGP	Port	Local	uals	tives	Avg. Wkly	% Cst	Clk	Frm	Exp. Rates*	Cont'r	Other	Lmbr	Autos	Bulk	TOTAL	2000 YTD	Coast	'00 as a	Cstwise	
NO.	NO.	NO.	HRS	\$	%	%	%	%	HRS	%	%	%	%	RU's	Gen'l	Logs	Trucks	Cargo	TOTAL	(Jan-Nov)	Total	% of '99	Loaded	
														%	%	%	%	%	%	TONS	%	%	TONS	
Longshoremen																								
<i>Southern California</i>																								
29 San Diego	57	14	57	2,309	< 1	5.7	5.1	39.4	1.5	4,450	1.0	9.1	12.5	30.4	< 0.1	3.9	1.7	58.1	36.3	100.0	4,479,979	1.9	115.5	1,080
13 Los Angeles/Long Beach	4,368	846	4,307	2,145	< 1	0.2	1.4	9.8	0.4	290,609	62.1	25.0	9.4	21.1	82.2	3.8	0.1	4.3	9.6	100.0	130,069,076	54.5	114.4	107,355
46 Port Hueneme	75	2	73	2,223	< 1	6.1	5.4	48.6	0.1	6,920	1.5	16.7	6.6	25.7	6.9	20.2	-	70.4	2.5	100.0	3,101,146	1.3	118.8	0
Southern California Total	4,500	862	4,437	2,149	< 1	0.4	1.6	11.4	0.4	301,979	64.5	24.6	9.3	21.4	77.9	4.1	0.2	7.5	10.3	100.0	137,650,200	57.7	114.5	108,435
<i>Northern California</i>																								
10 San Francisco Bay Area	1,172	327	1,118	1,726	< 1	0.9	1.1	1.3	0.7	53,700	11.5	26.0	8.4	20.1	86.8	2.8	< 0.1	4.8	5.6	100.0	22,064,765	9.3	108.1	0
54 Stockton	59	25	58	1,763	18	5.6	8.3	20.6	0.2	3,101	0.7	17.9	7.7	17.5	< 0.1	12.8	0.3	-	86.9	100.0	1,609,220	0.7	104.7	0
18 Sacramento	22	1	22	1,831	118	8.2	15.5	24.0	1.4	1,669	0.4	23.8	7.3	15.1	-	22.9	1.0	-	76.1	100.0	829,947	0.3	112.3	0
14 Eureka	26	1	24	1,325	174	29.5	9.4	20.5	1.4	690	0.1	11.3	9.9	19.2	-	29.5	29.1	-	41.4	100.0	546,821	0.2	89.0	0
Northern California Total	1,279	354	1,222	1,722	6	1.7	2.0	3.4	0.7	59,160	12.6	25.4	8.3	19.8	76.5	4.7	0.7	4.2	13.9	100.0	25,050,752	10.5	107.5	0
<i>Oregon</i>																								
12 North Bend/Coos Bay	78	0	73	1,245	260	44.3	5.2	2.7	1.0	1,199	0.3	8.7	7.8	1.3	< 0.1	0.6	8.0	-	91.4	100.0	1,897,487	0.8	90.9	56,292
53 Newport	10	3	10	886	387	89.9	12.1	0.0	0.0	20	0.0	0.0	0.0	2.3	-	-	100.0	-	-	100.0	2,890	0.0	33.3	0
50 Astoria	35	0	34	782	515	85.4	0.4	0.2	0.9	77	0.0	0.0	0.8	0.2	-	-	100.0	-	-	100.0	15,429	0.0	81.3	0
8 Portland	462	69	450	1,825	9	4.1	8.9	2.8	1.1	21,615	4.6	15.7	7.5	9.2	19.2	3.5	0.2	18.8	58.4	100.0	17,632,516	7.4	100.6	54,660
4 Vancouver, WA	147	34	145	1,781	15	13.2	12.6	4.7	0.9	6,365	1.4	14.1	6.6	9.8	0.3	8.9	0.4	12.9	77.5	100.0	4,127,417	1.7	88.5	0
21 Longview, WA	187	28	187	2,018	7	11.4	8.1	4.9	1.2	8,849	1.9	9.6	8.2	10.3	< 0.1	9.4	7.2	-	83.4	100.0	8,713,839	3.7	108.2	34,854
Oregon Total	919	134	899	1,761	53	11.5	9.2	3.6	1.1	38,124	8.1	13.7	7.5	9.3	10.5	5.6	2.6	11.9	69.5	100.0	32,389,579	13.6	100.1	145,806
<i>Washington</i>																								
24 Aberdeen	66	2	66	1,301	185	33.5	10.7	2.8	0.2	1,370	0.3	5.2	5.3	1.5	1.9	9.1	89.0	-	-	100.0	279,709	0.1	77.8	174,374
27 Port Angeles	49	0	49	708	577	75.6	1.9	1.4	7.9	214	0.0	7.3	7.4	0.5	-	-	10.1	-	89.9	100.0	199,237	0.1	79.0	44,833
51 Port Gamble	10	0	10	553	709	85.0	7.4	0.0	0.0	17	0.0	0.0	0.0	0.0	-	-	-	-	-	-	0	0.0	-	0
47 Olympia	27	5	27	725	454	50.7	17.5	6.6	1.2	255	0.1	3.3	18.1	5.4	0.7	0.8	56.7	-	41.8	100.0	32,931	0.0	83.8	0
23 Tacoma	557	154	554	2,021	< 1	0.3	7.4	10.7	0.7	33,554	7.2	21.8	8.0	15.8	63.3	0.7	1.5	8.4	26.0	100.0	22,381,012	9.4	105.3	0
19 Seattle	570	109	562	1,851	< 1	2.9	4.9	7.6	0.2	31,270	6.7	24.7	8.0	6.6	84.9	1.2	< 0.1	3.4	10.4	100.0	19,244,051	8.1	98.5	35,408
32 Everett	41	0	39	1,110	222	12.3	5.7	6.5	4.1	1,055	0.2	8.6	9.5	3.2	6.4	1.0	13.1	-	79.6	100.0	400,586	0.2	92.9	28,542
25 Anacortes	12	0	12	1,126	234	21.9	23.7	1.4	0.4	341	0.1	10.9	15.2	1.2	-	-	9.0	-	91.0	100.0	258,131	0.1	112.9	0
7 Bellingham	28	0	28	950	308	24.2	12.1	3.9	0.1	580	0.1	10.0	11.3	3.6	-	8.9	-	-	91.1	100.0	589,513	0.2	81.3	0
Washington Total	1,360	270	1,347	1,773	60	4.9	6.5	8.9	0.5	68,656	14.7	22.3	8.0	10.8	70.4	1.1	1.6	5.9	21.0	100.0	43,385,169	18.2	101.3	283,157
Total/Average	8,058	1,620	7,905	1,975	17	2.4	3.1	9.3	0.5	467,930	100.0	23.5	8.9	18.6	67.2	3.8	0.8	7.5	20.7	100.0	238,475,701	100.0	109.1	537,398
% Change from Update of 12/99	+7.7	+14.3	+7.6	+0.6	-11.1	-0.4	+0.1	+0.3	-0.9	+30.8	+0.5	-0.2	-0.3		12.3%	0.5%	5.4%	12.4%	1.1%	9.3%			-9.6%	

Clerks												
29 San Diego	4	0	4	***	***	10.4	39.3	14.5	0.0			
46 Port Hueneme	12	0	12	2,757	-	1.0	34.6	10.2	0.9			
63 Los Angeles/Long Beach	972	4	957	2,778	< 1	0.2	10.6	19.8	0.4			
14 Eureka	2	0	2	***	***	20.9	49.6	1.5	0.6			
34 SF Bay Area & Delta	274	7	270	2,422	< 1	3.2	13.8	2.1	1.0			
40 Portland	97	0	93	2,467	9	32.3	13.3	1.7	2.0			
23 Tacoma	79	0	79	2,743	-	0.0	41.2	2.7	1.3			
52 Seattle	156	0	152	2,609	1	14.7	12.0	2.7	1.6			
Total/Average	1,596	11	1,569	2,678	< 1	3.8	13.7	14.0	0.7			
Foremen/Walking Bosses												
29 San Diego	4	0	4	***	***	1.9	63.8	1.3	0.4			
46 Port Hueneme	7	-	7	2,495	4	1.1	28.8	0.4	0.1			
94 Los Angeles/Long Beach	391	-	390	3,592	< 1	0.3	5.3	0.0	2.2			
91 Northern Calif. Area	73	-	73	2,901	11	0.7	19.2	0.0	0.6			
92 Portland	50	-	48	2,604	22	8.0	16.1	0.0	4.0			
98 Seattle	96	-	96	2,716	15	9.8	10.9	0.0	1.5			
Total/Average	621		618	3,280	5	2.0	9.5	0.0	2.0			



* Longshore and Clerk hours only. *** "Annual Hrs Pd" and "Wkly PGP" for groups of less than five individuals are not shown, but the data are included in category averages.