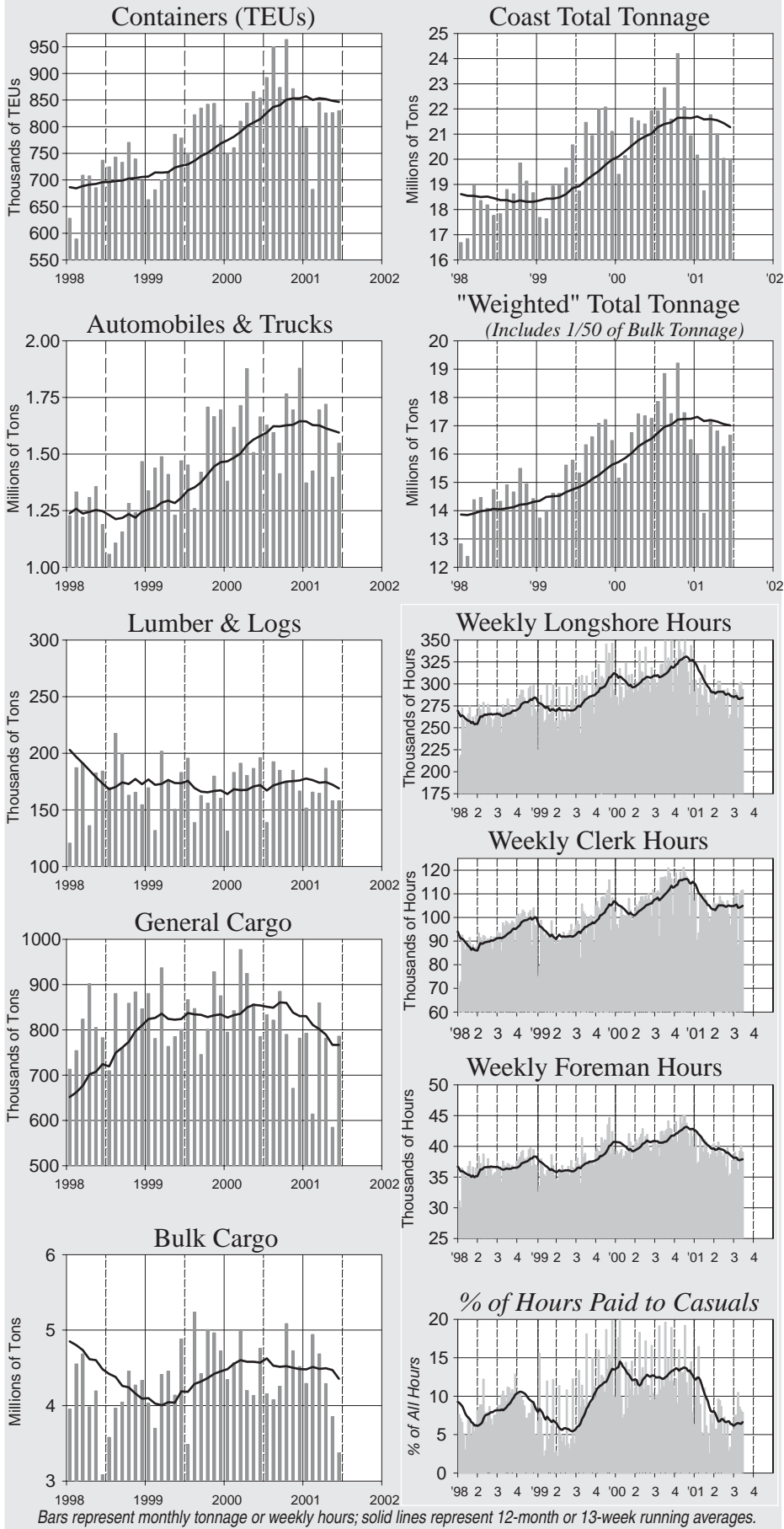
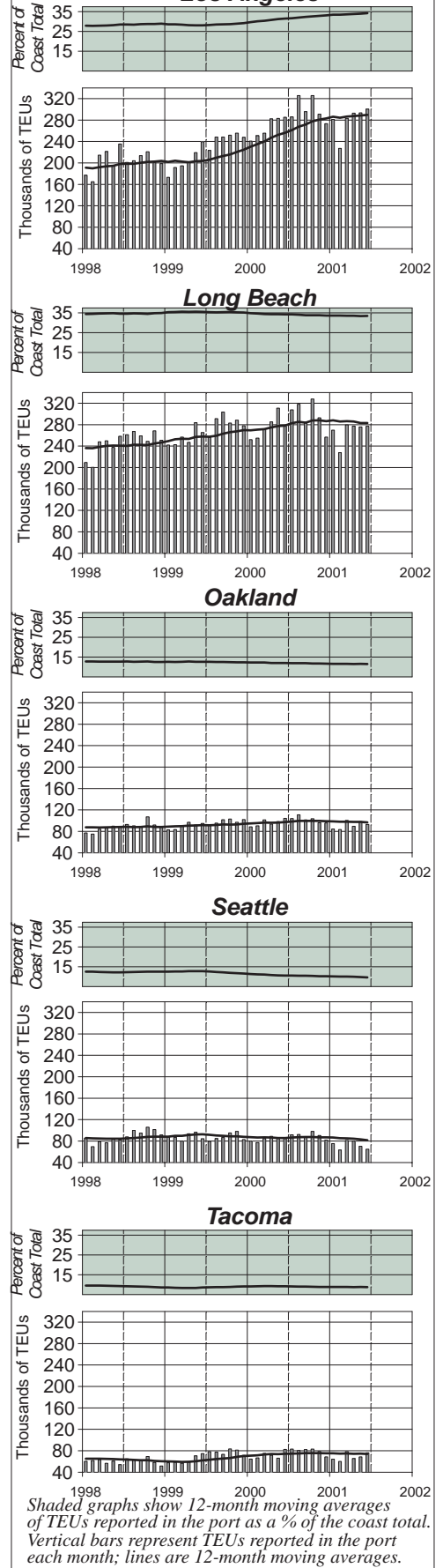


# Monthly Tonnage by Reporting Category and Weekly Hours by Occupation Code Type

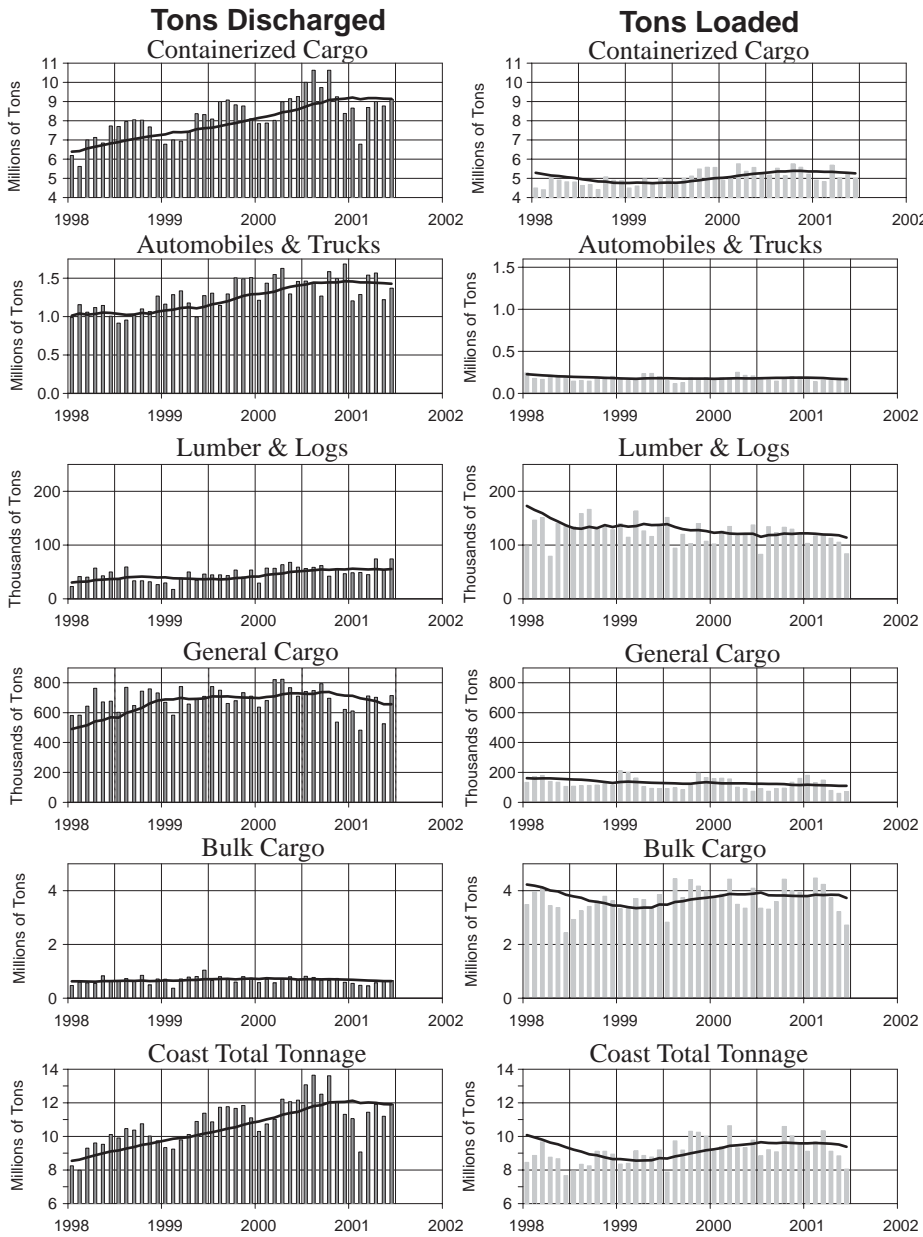


# Major Container Ports: Monthly TEUs Reported & Percent of Coast Total TEUs



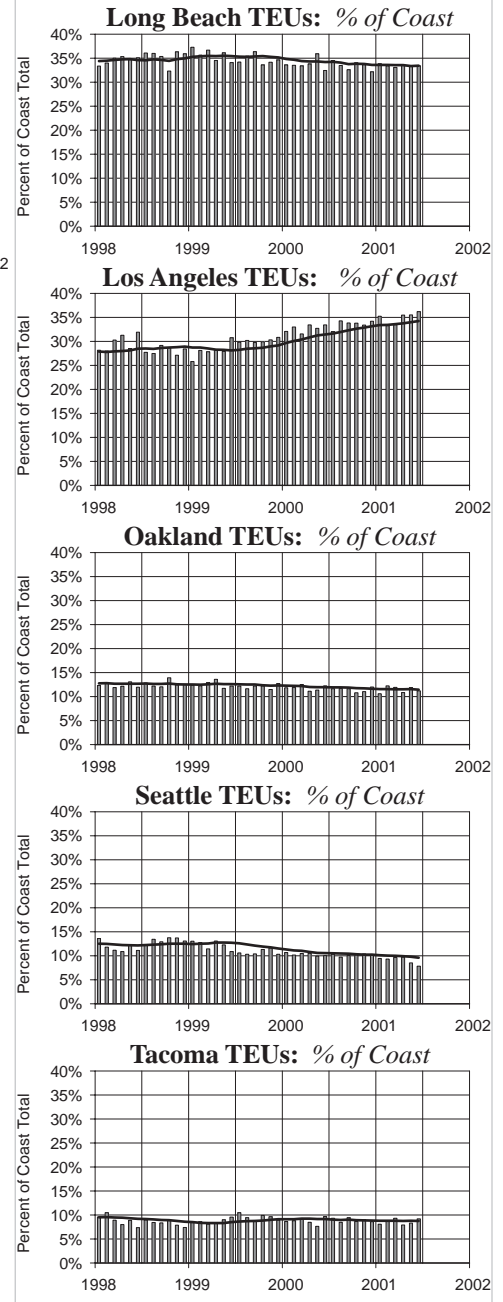
# Monthly Tonnage by Reporting Category: Discharged vs. Loaded

*Actual Tons Reported by Month*



In the Tonnage graphs above, bars represent monthly totals, and the lines show 12-month moving averages.

## Major Container Ports: Percent of Coast Total TEUs



## "Weighted" Tonnage: % Discharged vs. % Loaded

("Weighted" Tonnage = Containerized + 1/6 of Autos & Trucks + Lumber & Logs + General + 1/50 of Bulk)

% Discharged  % Loaded

